



TRUCK PLOW PRODUCT GUIDE: 2025-26
BEST SERVED COLD



SNOWPLOWS

HARDWORKING PLOWS FOR HARDWORKING PEOPLE.

IS YOUR FLEET STORM READY?



V-PLOWS

Push, stack, or windrow snow with the same truck and plow.



WING PLOWS

Wing operation lets the operator increase efficiency with every push.



STRAIGHT BLADE PLOWS

Simple operation for windrowing snow.

REASONS TO BELIEVE

We're known around the globe for tough products made by tough Mainers. Consider these features standard, no matter what's on the front of your truck.

(A) Chain Lift Design

The FISHER® chain-lift setup stacks higher, scrapes cleaner, and recovers easier than direct-lift designs. When reliability matters most, count on the chain.

(B) Minute Mount® 2 Plow Attachment

A rugged mechanical hookup built for harsh winters. No sensitive electronics—just smart design that guides your plow and meets safety standards.

(C) SECURITY GUARD™ Anti-Theft System

Lock your plow electronically when detached. Only your control or backup code can unlock it—protection that's smart, simple, and secure.

(D) STORM GUARD™ Powder Coat*

A finish built for years of hard winters. Epoxy-primed and powder-coated—this is the best protection against rust and wear in the industry.

Pre-Punched Blades

Accessory-ready blades come pre-punched, saving install time and protecting your finish. Just bolt on and go—no drilling required.

FLEET FLEX Electrical System

One wiring system for all modern FISHER plows. Simplifies installs, minimizes vehicle disruption, and keeps operations nimble—any plow, any truck, any time. Dependable and fleet-friendly.

Reliable Hydraulics

Fast, smooth, and protected from the elements. Fisher Engineering builds its own hydraulics for total confidence when the storm hits.

Isolation Module

Plug-and-play electrical system that shifts your lights to the plow automatically. Keeps vehicle systems safe and installs clean with sealed OEM-grade connectors.

Universal Control Options

Choose between a hand-held or dash-mounted control—both intuitive, backlit, and built to handle long hours and tough jobs. Features include soft-stop, float mode, and anti-theft lock.



(A)



(B)



(C)



(D)

V-PLOWS





V-PLOWS

THE FLYING V THAT NEVER FLOCKS SOUTH.

BEST SUITED FOR:

Operators who need flexibility clearing tight driveways, wide lots, and everything in between. V-plows' adaptive designs keep you moving efficiently and powerfully, no matter the conditions.

VEHICLE COMPATIBILITY:

Varies across models, ranging from half-ton pickups to class 7 work trucks (under 11,793 kg GVWR).

WHAT THIS MEANS FOR YOU:

With the press of a button, FISHER® V-plows adapt to your needs—switching effortlessly between multiple modes for endless scenarios. This collection is all about meeting the moment, and keeping you efficient from one job to the next. Because winter doesn't wait for mediocrity.

SIGNATURE FEATURES



▣ MULTIPLE BLADE MODES

Switch between straight, V, and scoop to match the job. Whether you're pushing, stacking, or windrowing—you'll be doing it better than the rest.



▣ TRIP-EDGE DESIGN

Independent trip-edges on each wing protect your equipment and keep snow moving forward—no springs to adjust or replace.



▣ INSTALOCK CYLINDERS

Double-acting cylinders lock wings for straight-blade mode and hold tight during back dragging.



▣ CENTER SNOW CONTROL

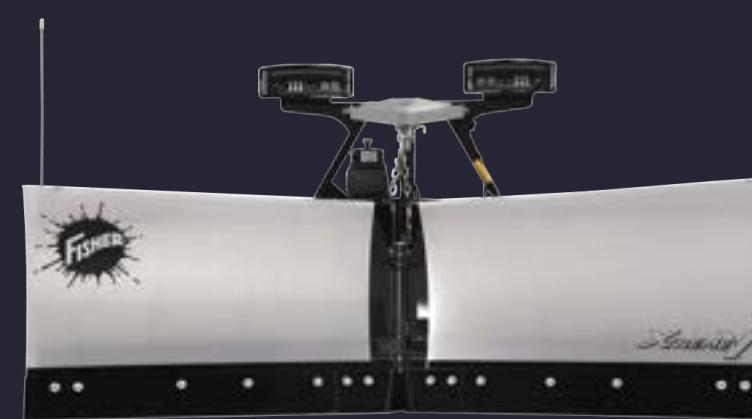
A center deflector and formed cutting edges reduce spillover and trailing for cleaner passes in all positions.



XV2™ HEAVY-DUTY

Fisher Engineering's largest, most rugged V-plow built for high-volume commercial jobs and municipal use.

BLADE SIZES:	10'6" (3.20 m)
BLADE CONSTRUCTION:	11-ga powder-coated steel or 12-ga stainless steel
STRUCTURAL REINFORCEMENT:	4 vertical ribs & 8 X-bracing ribs
LIFT & ANGLE RAM DIAMETER:	1.75" 2" (4.45 cm 5.08 cm)
VEHICLE COMPATIBILITY:	Class 2-7 (under 27,500 lbs GVWR)



XtremeV™

Durable, lightweight v-plow with an aggressive attack angle and large build, ready to take on storms of every size.

BLADE SIZES:	8'6", 9'6" (2.59 m, 2.90 m)
BLADE CONSTRUCTION:	14-ga powder-coated steel or stainless steel
STRUCTURAL REINFORCEMENT:	4 vertical ribs & 8 X-bracing ribs
LIFT & ANGLE RAM DIAMETER:	1.5" 1.75" (3.81 cm 4.45 cm)
VEHICLE COMPATIBILITY:	Class 2-3



XV2™

Commercial-grade V-plow that blends power and versatility for contractors with heavier-duty pickups.

BLADE SIZES:	8'6", 9'6" (2.59 m, 2.90 cm)
BLADE CONSTRUCTION:	14-ga powder-coated steel or 14-ga stainless steel
STRUCTURAL REINFORCEMENT:	4 vertical ribs & 8 X-bracing ribs
LIFT & ANGLE RAM DIAMETER:	1.75" 1.75" (4.45 cm 4.45 cm)
VEHICLE COMPATIBILITY:	Class 2-6



EZ-V®

The ideal V-plow for half-ton trucks, balancing performance, weight, and maneuverability for residential and light-duty commercial work.

BLADE SIZES:	7'6" (2.29 m)
BLADE CONSTRUCTION:	14-ga powder-coated steel or high-strength, low-alloy stainless steel
STRUCTURAL REINFORCEMENT:	6 vertical ribs (powder-coated) ; 6 vertical & 2 horizontal ribs(stainless)
LIFT & ANGLE RAM DIAMETER:	1.25" 1.5" (3.18 cm 3.81 cm)
VEHICLE COMPATIBILITY:	Half-ton

FROM DUSK TO DAWN,

INTENSIFIRE™ LED HEADLIGHTS

Designed for superior visibility, offering long-lasting performance (~50,000 hours) and energy efficiency. Ideal for those who prioritize high performance, these LEDs are built to handle tough conditions and maximize safety during night plowing.

EdgeView™ TECHNOLOGY

Provides a wide, 180-degree bright beam for superior visibility in low-light conditions.

ENERGY EFFICIENT

Energy-efficient and long-lasting, reducing the need for frequent replacements.

DURABLY DEPENDABLE

Flat, ultra-white beam reduces glare and lights up what's ahead with precision.

SMART HEATING

Built-in sensors activate heat only when needed to keep lenses clear in snow and ice.

INTENSIFIRE™ DUAL-HALOGEN HEADLIGHTS

Halogen headlamps are a cost-effective option that deliver reliable lighting (~1,500 hours) for everyday plowing needs. This is the standard, trusted lighting kit that's shown the way for endless operators over the years.

PRICED RIGHT

Lower initial cost, for those not ready to go all-in on LEDs.

RELIABLE IN COLD

Trusted for years by FISHER Nation, providing warm light in cold temperatures.

REPLACEABLE ANYTIME

Despite not lasting as long as LEDs, halogen bulbs are easy to replace whenever needed.

LET THE LIGHTS BURN BRIGHT.



STAY IN CONTROL.



NO MATTER THE JOB.

FISHER controls are built to keep you focused, efficient, and in command—no matter what plow you're running. With a consistent control layout across

most models, there's no learning curve when your fleet or workload expands. That means less downtime and more confidence on the job.



PLOW ACCESSORIES

Let the details do the heavy lifting.

Back Drag Edges

Made from ¼" abrasion-resistant steel and custom fit to your blade, back drag edges improve plowing results, providing a clean scrape while back dragging.

Commercial Blade Guide Kits

Commercial blade guides are highly visible fluorescent orange, enhanced with reflective tape, featuring the FISHER® logo, and available in 24" or 36" lengths.

(A) Steel Deflector

Extend the height of your blade and help keep snow off the windshield without affecting your ability to stack snow.

(B) FISHER Factory Original Paint

Genuine Factory-Tough paint in black, silver, and FISHER yellow provides durable coverage and is mixed to match your original equipment. Available in spray cans, quarts or gallons.

(C) Plow Parka

Heavy-duty, FISHER branded, nylon cover protects electrical and hydraulic systems from sun fade, oxidation and corrosion.

EZ Flow Hydraulic Fluid

FISHER EZ Flow high-performance hydraulic fluid is specifically formulated to provide better viscosity at temperatures for optimal performance in severe conditions. Available in 1-quart, 1-gallon, and 55-gallon sizes.

(D) Wing Extensions

Expand the carrying capacity of your XtremeV™ HD2™, HDX™ blades.

Blade Angle Stop

Designed to transfer extreme impacts throughout the blade's structure and reduce stress on the hydraulic rams.

Curb Guards

Constructed of abrasion-resistant material and designed to fit tight to the blade, our curb guards allow you to plow along curbs without damaging your blade. Kits vary by plow model.

Emergency Parts Kit – Minute Mount® 2

Be prepared! This emergency parts kit is designed specifically for the NEW FLEET FLEX system snowplows. All kits contain high-volume FISHER Genuine Factory-Tough service parts needed for most emergency repairs.

FREEZE GUARD™ Grease

Available in 14 oz, 7 lb, 120 lb, and 400 lb sizes, FISHER FREEZE GUARD Grease defends and protects plow and spreader bearings, pivot points and moving components from wear and corrosion, even in extreme cold.

Heavy-Duty Lift Ram

Improve your blade's lifting force with this larger-diameter ram.

Cutting Edges

Increase wear resistance and restore your worn base angle to the proper geometry. Steel, rubber, poly, and carbide options available depending on plow model.

SnoFoil® Steel and Poly Deflectors

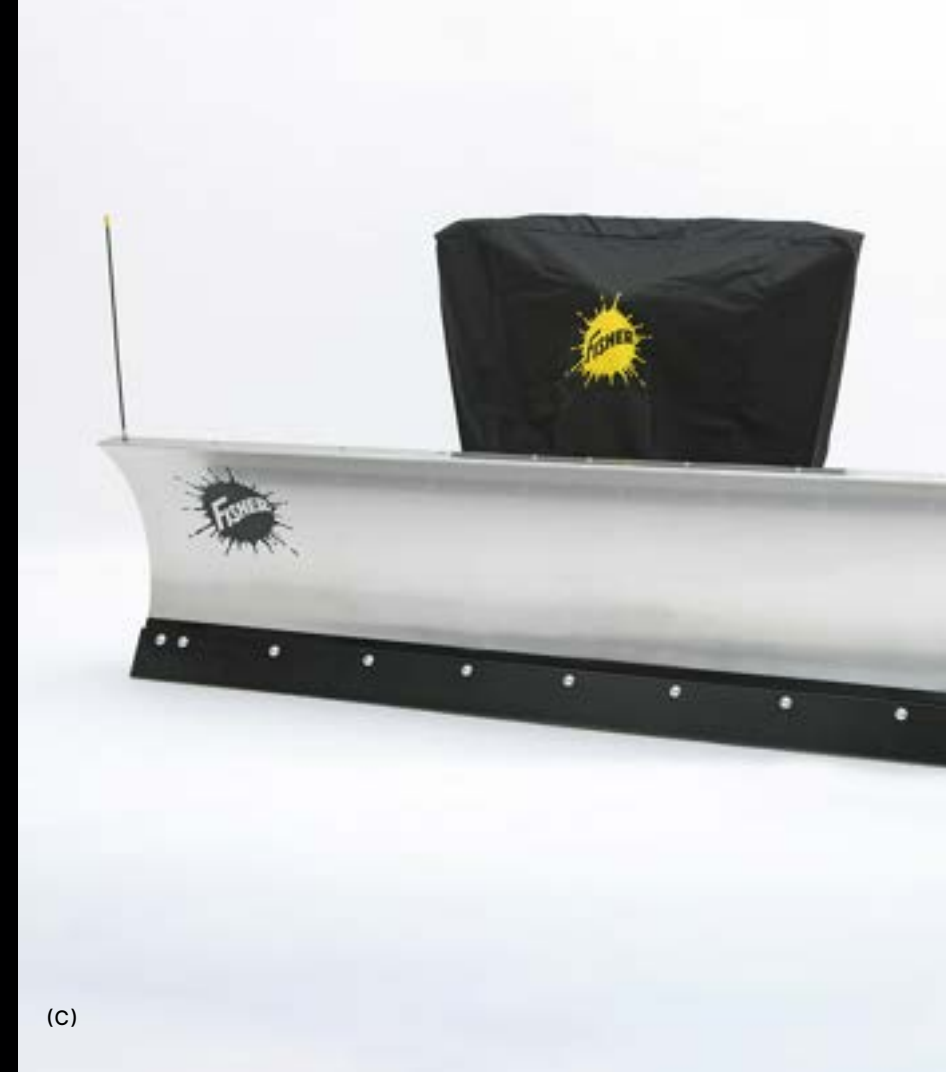
The curved, rigid design of the SnoFoil deflector provides excellent snow-rolling performance, ensuring you have visibility while plowing and reduces snow accumulation on the windshield.

Shoe Kits

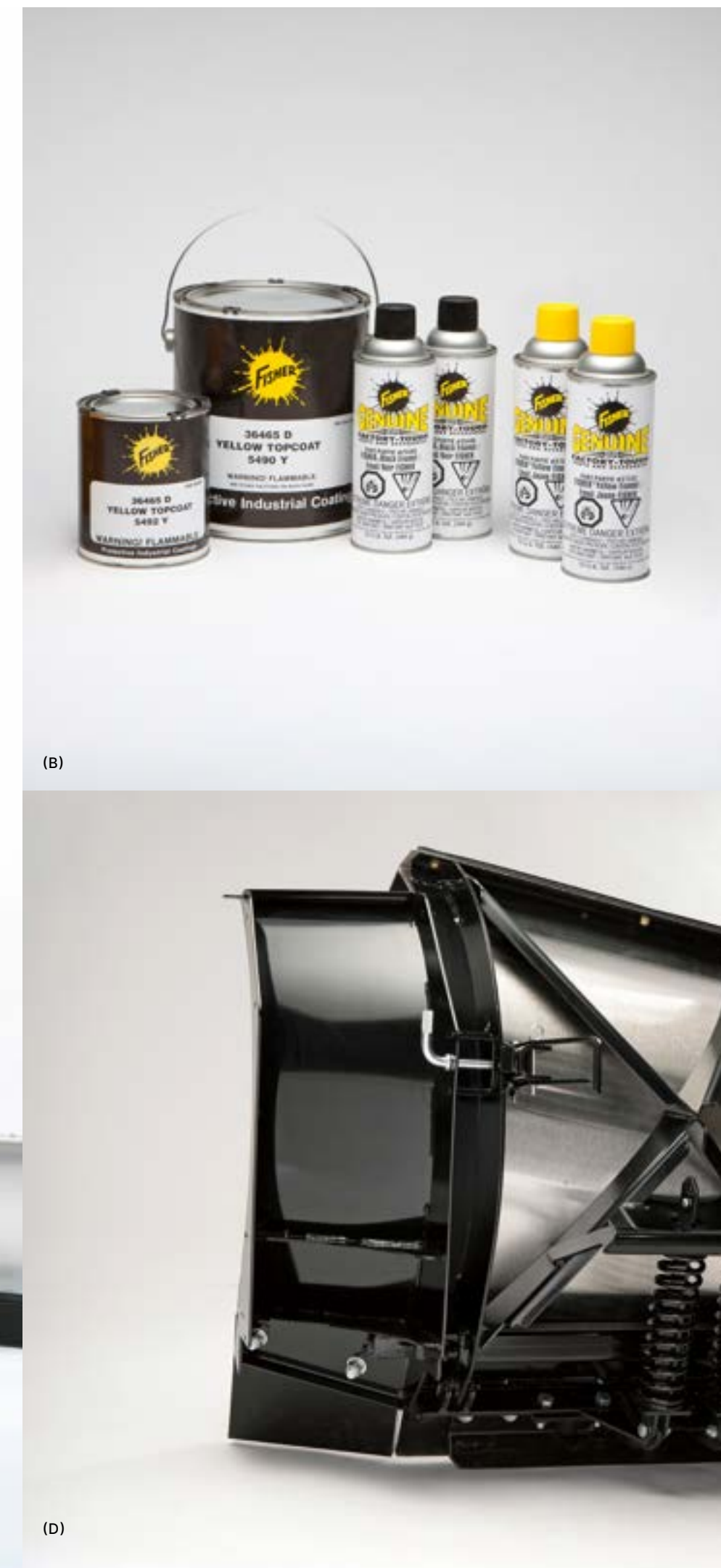
Designed to increase the durability and life span of cutting edges and base angles by raising the blade for use on gravel and uneven surfaces. Extreme heavy-duty shoe kits available for specific models.



(A)



(C)



(B)

(D)

PLOW ACCESSORIES SPECS

(STD) Included standard with plow

■ Available as an optional accessory

* Shoe Kits cannot be used simultaneously with Back Drag Edges

** Curb Guards cannot be used simultaneously with Wing Extension Kits

V-PLOWS	XV2™			XtremeV™		EZ-V®	WINGED PLOWS	XLS™		XRS™
	10'6" (320 cm)	9'6" (274.32cm)	8'6" (243.84cm)	9'6" (274.3 cm)	8'6" (243.8 cm)	7'6" (213.4 cm)		8'6" (243.8 cm)	10'6" (320 cm)	8'7" (259 cm)
3/8" STEEL CUTTING EDGE:			STD		STD	STD	3/8" STEEL CUTTING EDGE:		■	
1/2" STEEL CUTTING EDGE:	STD	STD	■	STD	■	■	1/2" STEEL CUTTING EDGE:	STD	STD	STD
5/8" STEEL CUTTING EDGE:	■	■	■				5/8" STEEL CUTTING EDGE:	■	■	
3/4" CARBIDE CUTTING EDGE:	■	■	■	■	■		3/4" CARBIDE CUTTING EDGE:			
1" POLY MOLDBOARD CUTTING EDGE:	■	■	■	■	■	■	1" POLY MOLDBOARD CUTTING EDGE:	■	■	■
RUBBER DEFLECTOR:	■	■	■	■	■	■	RUBBER DEFLECTOR:	■	■	■
GRILLE PLATE -11- OR 14-PIN KIT:	■	■	■	■	■	■	GRILLE PLATE -11- OR 14-PIN KIT:	■	■	■
CUP HOLDER CONTROL MOUNT:	■	■	■	■	■	■	CUP HOLDER CONTROL MOUNT:	■	■	■
PLOW PARKA:	■	■	■	■	■	■	PLOW PARKA:	■	■	■
SHOE KIT:*	■	■	■	■	■	■	SHOE KIT:*			
EXTREME WEAR SHOE KIT:	■	■	■	■	■	■	EXTREME WEAR SHOE KIT:	■	■	■
CURB GUARD KIT:	STD	■	■	■	■	■	CURB GUARD KIT:			
CURB GUARD-CAST IRON:		■	■	■	■	■	CURB GUARD-CAST IRON:			
BLADE ANGLE STOP:	STD	■	■	■	■	STD	BLADE ANGLE STOP:			
WING EXTENSIONS:		■	■	■	■		WING EXTENSIONS:			
BACK DRAG EDGE KIT:*	■	■	■	■	■	■	BACK DRAG EDGE KIT:*	■	■	
1 3/4" HEAVY-DUTY LIFT RAM:				■	■		1 3/4" HEAVY-DUTY LIFT RAM:			
COMMERCIAL BLADE GUIDE KIT:	■	■	■	■	■	■	COMMERCIAL BLADE GUIDE KIT:	■	■	■
BALLAST RETAINER KIT:	■	■	■	■	■	■	BALLAST RETAINER KIT:	■	■	■
EMERGENCY PARTS KIT:	■	■	■	■	■	■	EMERGENCY PARTS KIT:	■	■	■
FASTENER CONTROL MOUNTING KIT:	■	■	■	■	■	■	FASTENER CONTROL MOUNTING KIT:	■	■	■
SECURITY KIT, LED HEADLIGHTS:	■	■	■	■	■	■	SECURITY KIT, LED HEADLIGHTS:	■	■	■

COMPREHENSIVE V-PLOW SPECS

Applies to XV2 and XtremeV:
 *Plus vehicle mount: approx. 60 lb (27.22 kg)
 Applies to EZ-V:
 *Weight of the vehicle mount not included

XV2™	8'6" (2.59 m)	9'6" (2.90 m)	10'6" (3.20 m)	EZ-V®	7'6" (2.29 m)	7'6" (2.29 m)
MOLDBOARD OPTIONS:	Steel/Stainless	Steel/Stainless	Steel/Stainless	MOLDBOARD OPTIONS:	Stainless	Powder-Coated Steel
BLADE WIDTH:	8'6" (2.59 m)	9'6" (2.90 m)	10'6" (3.20 m)	BLADE WIDTH:	7'6" (2.29 m)	7'6" (2.29 m)
BLADE HEIGHT:	At Center: 31" (78.74 cm) At End: 38" (96.52 cm)	At Center: 31" (78.74 cm) At End: 39" (99.06 cm)	At Center: 35" (88.90 cm) At End: 45" (114.30 cm)	BLADE HEIGHT:	At Center: 27" (68.58 cm) At End: 33" (83.82 cm)	At Center: 27" (68.58 cm) At End: 33" (83.82 cm)
BLADE THICKNESS:	Steel: 14 ga Stainless: 14 ga	Steel: 14 ga Stainless: 14 ga	Steel: 11 ga Stainless: 12 ga	BLADE THICKNESS:	14 ga	14 ga
TRIP SPRINGS:	4	6	6	TRIP SPRINGS:	2	2
RIBS:	12	12	12	RIBS:	6 Vertical 2 Horizontal	6 Vertical
LIFT CYLINDER:	1.75" x 10" (4.45 cm x 25.40 cm)	1.75" x 10" (4.45 cm x 25.40 cm)	1.75" x 10" (4.45 cm x 25.40 cm)	LIFT CYLINDER:	1.25" x 8.63" (3.18 cm x 21.92 cm)	1.25" x 8.63" (3.18 cm x 21.92 cm)
ANGLING RAMS:	1.75" x 11" (4.45 cm x 27.94 cm)	1.75" x 11" (4.45 cm x 27.94 cm)	2" x 11" (5.08 cm x 27.94 cm)	ANGLING RAMS:	1.5" x 12" (3.81 cm x 30.48 cm)	1.5" x 12" (3.81 cm x 30.48 cm)
PLOWING WIDTH (FULL ANGLE):	Full Angle: 7'5" (2.26 m) Scoop: 7'2" (2.18 m) Full V: 7'8" (2.34 m)	Full Angle: 8'6" (2.59 m) Scoop: 8'2" (2.49 m) Full V: 8'7" (2.62 m)	Full Angle: 9'9" (2.97 m) Scoop: 9'7" (2.92 m) Full V: 9'11" (3.02 m)	PLOWING WIDTH (FULL ANGLE):	Full Angle: 6'7" (2.01 m) Scoop: 6'5" (1.96 m) Full V: 6'9" (2.06 m)	Full Angle: 6'7" (2.01 m) Scoop: 6'5" (1.96 m) Full V: 6'9" (2.06 m)
APPROXIMATE WEIGHT:*	972 lb (440 kg)	1,059 lb (480 kg)	1,322 lb (599 kg)	APPROXIMATE WEIGHT:*	550 (249 kg)	510 lb (231 kg)
CUTTING EDGE:	0.375" x 6" (0.95 cm x 15.24 cm)	0.5" x 6" (1.27 cm x 15.24 cm)	0.5" x 6" (1.27 cm x 15.24 cm)	CUTTING EDGE:	0.375" x 6" (0.95 cm x 15.24 cm)	0.375" x 6" (0.95 cm x 15.24 cm)
MOUNT TYPE:	Minute Mount® 2	Minute Mount 2	Minute Mount 2	MOUNT TYPE:	Minute Mount® 2	Minute Mount 2

XtremeV™	8'6" (2.59 m)	9'6" (2.90 m)
MOLDBOARD OPTIONS:	Steel/Stainless	Steel/Stainless
BLADE WIDTH:	8'6" (2.59 m)	9'6" (2.90 m)
BLADE HEIGHT:	At Center: 29" (73.66 cm) At End: 31" (78.74 cm)	At Center: 31" (78.74 cm) At End: 33" (83.82 cm)
BLADE THICKNESS:	14 ga	14 ga
TRIP SPRINGS:	4	6
RIBS:	12	12
LIFT CYLINDER:	1.5" x 10" (3.81 cm x 25.40 cm)	1.5" x 10" (3.81 cm x 25.40 cm)
ANGLING RAMS:	1.75" x 11" (4.45 cm x 27.94 cm)	1.75" x 11" (4.45 cm x 27.94 cm)
PLOWING WIDTH (FULL ANGLE):	Full Angle: 7'5" (2.26 m) Scoop: 7'1" (2.16 m) Full V: 7'7" (2.31 m)	Full Angle: 8'3" (2.51 m) Scoop: 7'11" (2.41 m) Full V: 8'7" (2.62 m)
APPROXIMATE WEIGHT:*	876 lb (397 kg)	984 lb (446 kg)
CUTTING EDGE:	0.375" x 6" (0.95 cm x 15.24 cm)	0.5" x 6" (1.27 cm x 15.24 cm)
MOUNT TYPE:	Minute Mount 2	Minute Mount 2



FISHER STORIES:

THE MAN BEHIND THE MOUNTS.

For the past 30 years, Andre LeBlond has grown the FISHER® legacy through his masterful engineering work—with a focus on our trusted mount systems. His name sits on the US Patent of the Minute Mount® 2. His team is responsible for every mount across FISHER Nation. And his story is endlessly inspiring.

Scan to watch





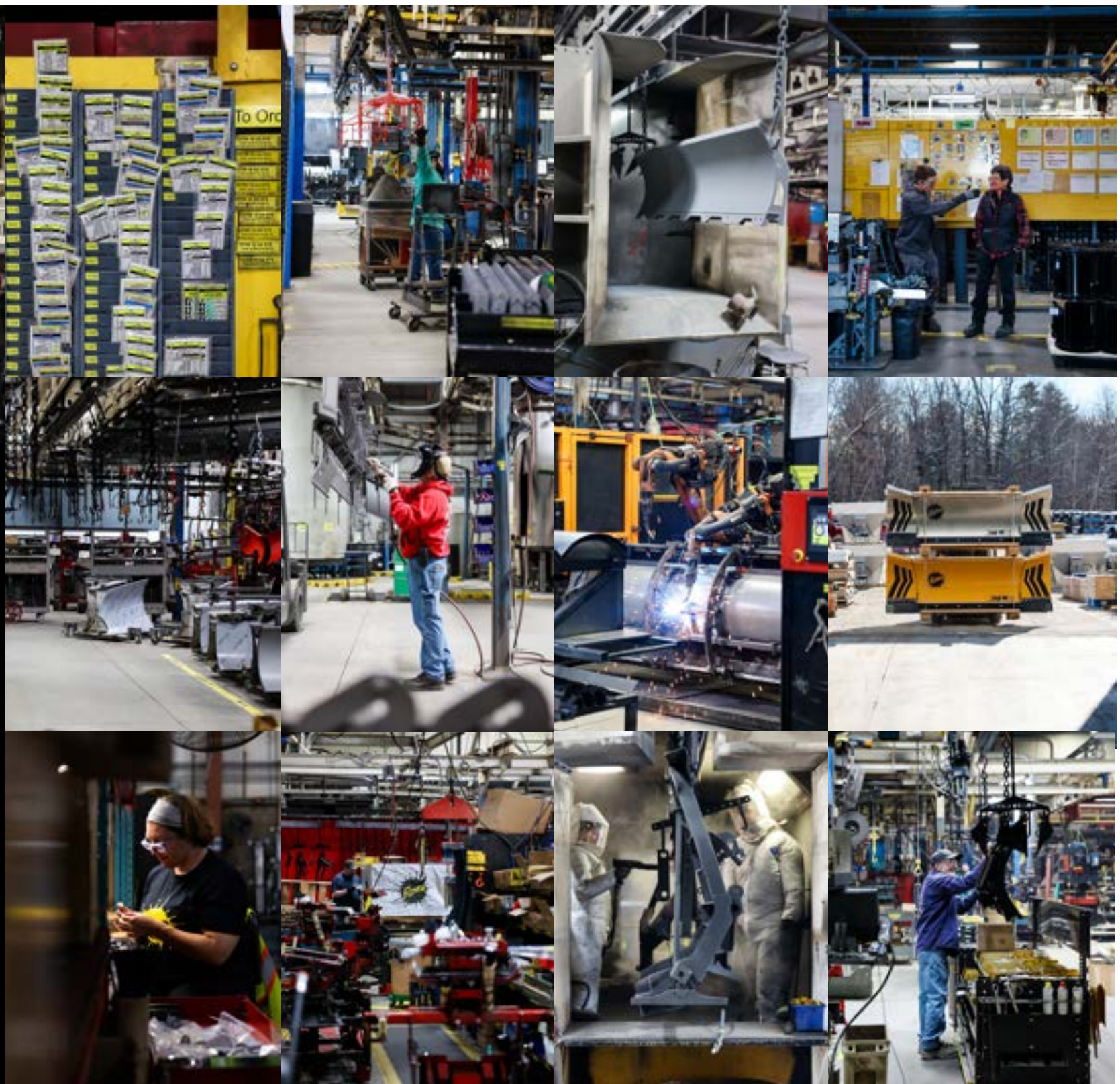
BORN IN THE USA.

SNOW + ICE IN OUR DNA

In 1948, a man named Dean Fisher started a snowplow company. The name was simple: His. And the destination was busy: Boston. So after a trip to see the in-laws in Maine, the plan changed.

Fisher chose a small coastal town called Rockland. In his words: "What better place to build snowplows than in snow country?" He began in a small garage by the water, and designed over 50 snowplows that first winter. Parts were chained to the pier—testing corrosion in the cold, salty ocean. That set the relentless bar for every winter to come. Over 75 years later, snowplows from Fisher Engineering are

frozen into culture as the leader of snow and ice removal. Our success grew us out of the garage, but we've always kept that day-one spirit. Still building, testing, and proving right here in Rockland.



"THE BEST PRODUCT WE KNOW HOW TO MAKE. THE BEST SERVICE WE KNOW HOW TO GIVE."

-Dean Fisher

FISHER ENGINEERING | 50 Gordon Drive | Rockland, Maine 04841

Fisher Engineering reserves the right under its product improvement policy to change construction or design details and furnish equipment when so altered without reference to illustrations or specifications used. Fisher Engineering or the vehicle manufacturer may require or recommend optional equipment for snow removal. Do not exceed vehicle ratings with a snowplow. This product is manufactured under the following US patents 7,681,334; 7,797,859; 9,200,418; 9,296,571; 9,822,563; 10,793,056; 11,680,379; 12,188,190; CAN patent 2,843,990; 2,900,491; and other patents pending. Fisher Engineering offers a limited warranty for all equipment and accessories. See separately printed page for this important information. The following are registered (®) or unregistered (™) trademarks of Douglas Dynamics, LLC: EdgeView™, EZ-V®, FISHER®, FREEZE GUARD™, HD2™, HDX™, HT Series™, INTENSIFIRE, Minute Mount® 2, SECURITY GUARD™, SnoFoil®, STORM GUARD™, TEMPEST™, XLS™, XRS™, XtremeV™.



FISHERPLOWS.COM

© 2025 Douglas Dynamics, LLC
All rights reserved.



SEE YOU IN THE STORM