



Scan QR code for instructions on measuring a truck bed for a tool box or transfer tank

# TRANSFER TANKS

# FEATURED PRODUCTS



## Rectangular tanks

Rectangular tanks are available in various sizes, including 24" square models, to accommodate many different types of truck beds.



## Hammerhead-style tanks

These tanks feature a narrowed base, making them a universal fit for all full-size trucks. Available in both L-shape and combo styles.



## Steel-aluminum combo tanks

These combo tanks are an industry first, featuring a dual construction of steel and aluminum to weigh less than competitive, full-steel models.

## PRODUCT INDEX



**78**

Transfer Tank Overview



**80**

Hammerhead-Style Tanks



**82**

Combo Tanks



**84**

L-Shaped Tanks



**86**

Rectangular Tanks

Tanks are DOT-compliant for transporting Class 3 combustible fuels only, such as diesel.

# TRANSFER TANK OVERVIEW



## Product Details

- Transfers diesel or other non-flammable liquids to on-site vehicles or equipment
- Lockable, commercial-grade vented cap with reinforced collar for added security (replacement cap #UWS-CAPS)
- Internal baffles for extra strength and a smooth, even flow of liquid
- Built-in 3/8" drain plug for easy and complete emptying as needed
- 100% of tanks are pressure tested for safety
- Integrated tabs for solid installation
- Unique, smooth finish on steel tanks and rugged diamond plate on aluminum
- Two built-in hooks make it easy to lift in and out of the truck (steel tanks only)
- Multiple tank capacities and styles available for a custom fit on each truck application
- Mounting hardware not included



ST-100HH-CB-MB

TT-50-LT-P

## Style Options

### Hammerhead



Narrow base fits all full-size trucks, including short bed

### Combo



Built-in tool box adds storage without reducing truck bed space

### L-shaped



L-shaped tank allows space for a crossover truck tool box

### Rectangular



Mounts behind the truck cab, leaving the bed open for cargo

## Finishes & Materials

### Steel tanks (tool box applies to combo tanks only)

**Finish:**  
Matte black

**Tank material:**  
14-gauge steel

**Tool box material:**  
0.080" aluminum

**Finish:**  
Semi-gloss white

**Tank material:**  
14-gauge steel

**Tool box material:**  
0.080" aluminum

### Aluminum tanks

**Finish:**  
Bright aluminum

**Material:**  
0.125" aluminum

**Finish:**  
Gloss black

**Material:**  
0.125" aluminum



## KEY FEATURES OF COMBO TANKS



Built-in tool box adds storage without reducing truck bed space



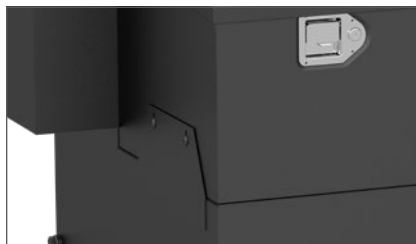
Patented RigidCore™ foam-filled lid adds strength and prevents binding



Stainless steel lock handles allow operation from either side



Strut-actuated lid opens 90° for convenient operation



Thru-bolted tool box with neoprene washers for water resistance



Interior rod enclosure helps prevent bending or jamming of lock system

Tanks are DOT-compliant for transporting Class 3 combustible fuels only, such as diesel.

# HAMMERHEAD-STYLE TANKS

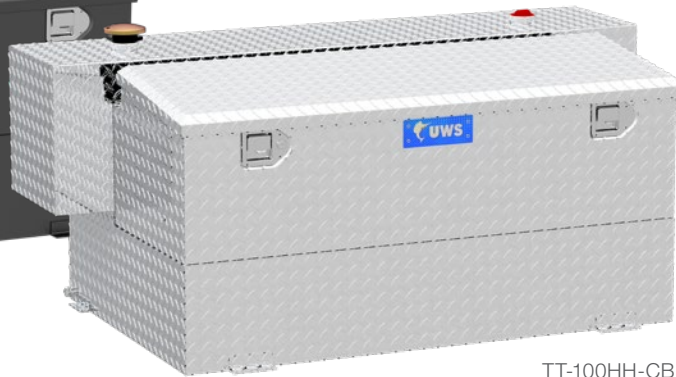


## Key Features

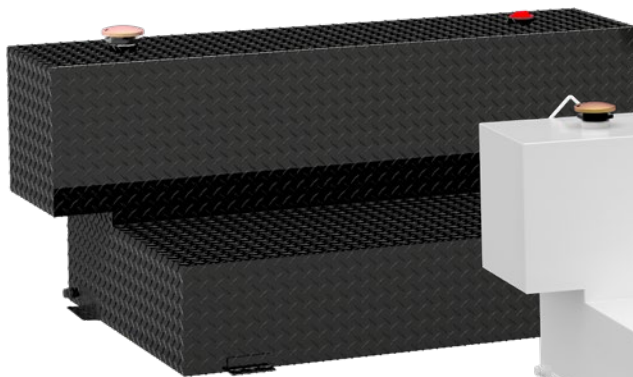
- Fits all full-size trucks, including short bed, with narrow base to fit between wheel wells
- Industry-first steel-aluminum combo tanks weigh less than full-steel tanks
- See page 78 for a full list of product details



ST-100HH-CB-MB



TT-100HH-CB



TT-100HH-B



ST-100HH-W

## Finishes & Materials

### Steel tanks (tool box applies to combo tanks only)

**Finish:**  
Matte black

**Tank material:**  
14-gauge steel

**Tool box material:**  
0.080" aluminum

**Finish:**  
Semi-gloss white

**Tank material:**  
14-gauge steel

**Tool box material:**  
0.080" aluminum

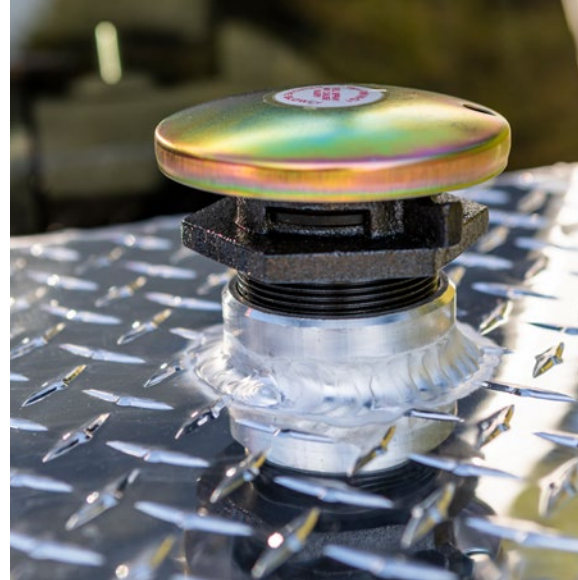
### Aluminum tanks

**Finish:**  
Bright aluminum

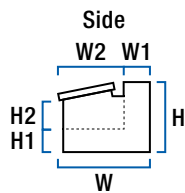
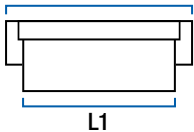
**Material:**  
0.125" aluminum

**Finish:**  
Gloss black

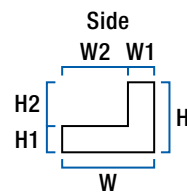
**Material:**  
0.125" aluminum



Combo, Angled Front  
L



L-Shaped Front  
L



Part #	Finish & Material	Gal.	Angled Lid	Cu. Ft.	Dimensions (inches)							
					L*	L1	W	W1	W2	H**	H1	H2
<b>Combo Tanks</b>												
ST-100HH-CB-MB	Matte black steel / aluminum	100	Yes	6.5	59	48	31	13	18	24.75	9.75	13
ST-100HH-CB-W	Semi-gloss white steel / alum.	100	Yes	6.5	59	48	31	13	18	24.75	9.75	13
TT-100HH-CB	Bright aluminum	100	Yes	6.5	59	48	31	13	18	24.75	9.75	13
TT-100HH-CB-B	Gloss black aluminum	100	Yes	6.5	59	48	31	13	18	24.75	9.75	13
<b>L-Shaped Tanks</b>												
ST-100HH-MB	Matte black steel	100	--	--	59	48	31	13	18	24.75	9.75	15
ST-100HH-W	Semi-gloss white steel	100	--	--	59	48	31	13	18	24.75	9.75	15
TT-100HH	Bright aluminum	100	--	--	59	48	31	13	18	24.75	9.75	15
TT-100HH-B	Gloss black aluminum	100	--	--	59	48	31	13	18	24.75	9.75	15

\* Add 3" to dimension (L) for mounting bracket clearance

\*\* Add 2-3/4" to dimension (H) for vent cap clearance

# COMBO TANKS



## Key Features

- Built-in tool box provides added storage without reducing truck bed space
- Patented RigidCore™ foam-filled lid maximizes strength and prevents binding
- Industry-first steel-aluminum combo weighs less than full-steel models
- See page 78 for a full list of product details



ST-100-COMBO-MB



ST-75-COMBO-W



TT-85-COMBO-BLK



TT-85-COMBO

## Finishes & Materials

### Steel tanks

**Finish:**  
Matte black

**Tank material:**  
14-gauge steel

**Tool box material:**  
0.080" aluminum

**Finish:**  
Semi-gloss white

**Tank material:**  
14-gauge steel

**Tool box material:**  
0.080" aluminum

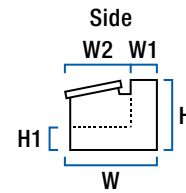
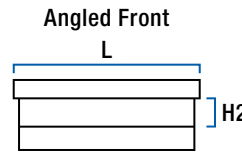
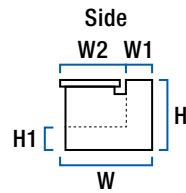
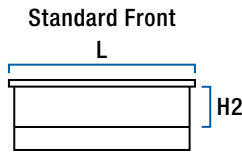
### Aluminum tanks

**Finish:**  
Bright aluminum

**Material:**  
0.125" aluminum

**Finish:**  
Gloss black

**Material:**  
0.125" aluminum



Part #	Finish	Gallons	Angled Lid	Cubic Feet	Dimensions (inches)						
					L*	W	W1	W2	H**	H1	H2
<b>Steel-Aluminum Tanks</b>											
ST-75-COMBO-W	Semi-gloss white	75	Yes	6.5	48.5	27	9	18	24	9	15
ST-75-COMBO-MB	Matte Black	75	Yes	6.5	48.5	27	9	18	24	9	15
ST-85-COMBO-W	Semi-gloss white	85	No	12	48.25	34	10	24	26	8	18
ST-85-COMBO-MB	Matte Black	85	No	12	48.25	34	10	24	26	8	18
ST-100-COMBO-W	Semi-gloss white	100	No	11.4	60	31	9	22	24	9	15
ST-100-COMBO-MB	Matte Black	100	No	11.4	60	31	9	22	24	9	15
<b>Aluminum Tanks</b>											
TT-45-COMBO	Bright aluminum	45	Yes	3.4	55	18.5	6	12	20.25	8	9
TT-45-COMBO-BLK	Gloss black	45	Yes	3.4	55	18.5	6	12	20.25	8	9
TT-50-COMBO	Bright aluminum	50	No	7	37	32.5	8	24	22.5	8	14.25
TT-50-COMBO-BLK	Gloss black	50	No	7	37	32.5	8	24	22.5	8	14.25
TT-75-COMBO	Bright aluminum	75	Yes	6.5	49	27.5	9	18	24	9	13
TT-75-COMBO-BLK	Gloss black	75	Yes	6.5	49	27.5	9	18	24	9	13
TT-85-COMBO	Bright aluminum	85	No	12	48.5	34.25	10	24	26.5	8	18
TT-85-COMBO-BLK	Gloss black	85	No	12	48.5	34.25	10	24	26.5	8	18
TT-100-COMBO	Bright aluminum	100	No	11.4	60.25	31.25	9	22	24.5	9	15
TT-100-CB-B	Gloss black	100	No	11.4	60.25	31.25	9	22	24.5	9	15

\* Add 3" to dimension (L) for mounting bracket clearance

\*\* Add 2-3/4" to dimension (H) for vent cap clearance



# L-SHAPED TANKS

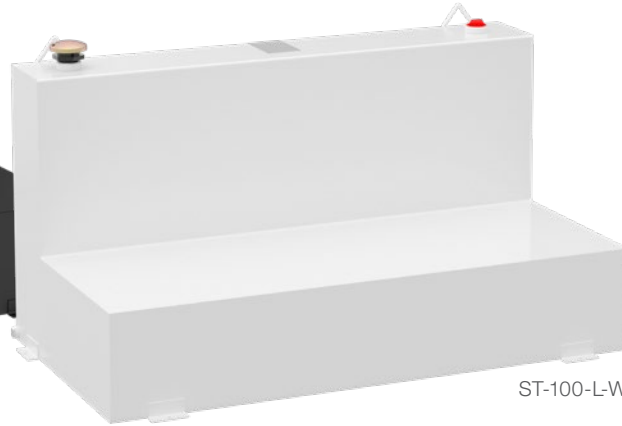


## Key Features

- L-shaped tank allows space for a truck tool box
- Lockable, commercial-grade vented cap with reinforced collar for added security
- See page 78 for a full list of product details



ST-100-L-MB



ST-100-L-W



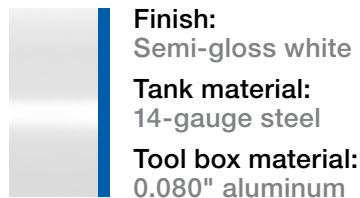
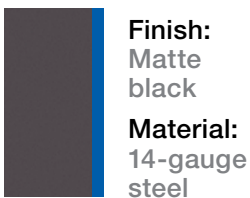
TT-50-L-T-P-BLK



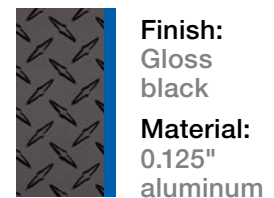
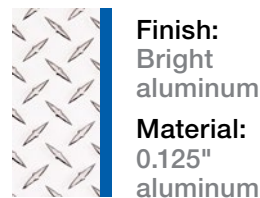
TT-50-L-T-P

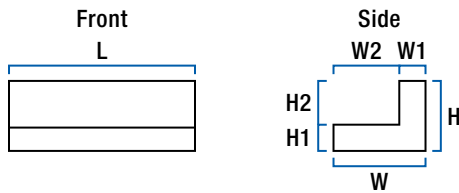
## Finishes & Materials

### Steel tanks



### Aluminum tanks





Part #	Finish	Gallons	Dimensions (inches)						
			L*	W	W1	W2	H**	H1	H2
<b>Steel Tanks</b>									
ST-75-L-W	Semi-gloss white	75	48	27	9	18	24	9	15
ST-75-L-MB	Matte black	75	48	27	9	18	24	9	15
ST-85-L-W	Semi-gloss white	85	48	34	10	24	26	8	18
ST-85-L-MB	Matte black	85	48	34	10	24	26	8	18
ST-100-L-W	Semi-gloss white	100	59.5	31	9	22	24	9	15
ST-100-L-MB	Matte black	100	59.5	31	9	22	24	9	15
<b>Aluminum Tanks</b>									
TT-50-L-T-P	Bright aluminum	50	36.25	32	8	24	22	8	14
TT-50-L-T-P-BLK	Gloss black	50	36.25	32	8	24	22	8	14
TT-75-L-T-P	Bright aluminum	75	48	27	9	18	24	9	15
TT-75-L-T-P-BLK	Gloss black	75	48	27	9	18	24	9	15
TT-85-L-T-P	Bright aluminum	85	48	34	10	24	26	8	18
TT-85-L-T-P-BLK	Gloss black	85	48	34	10	24	26	8	18
TT-100-L-T-P	Bright aluminum	100	59.5	31	9	22	24	9	15
TT-100-L-T-P-BLK	Gloss black	100	59.5	31	9	22	24	9	15

\* Add 3" to dimension (L) for mounting bracket clearance

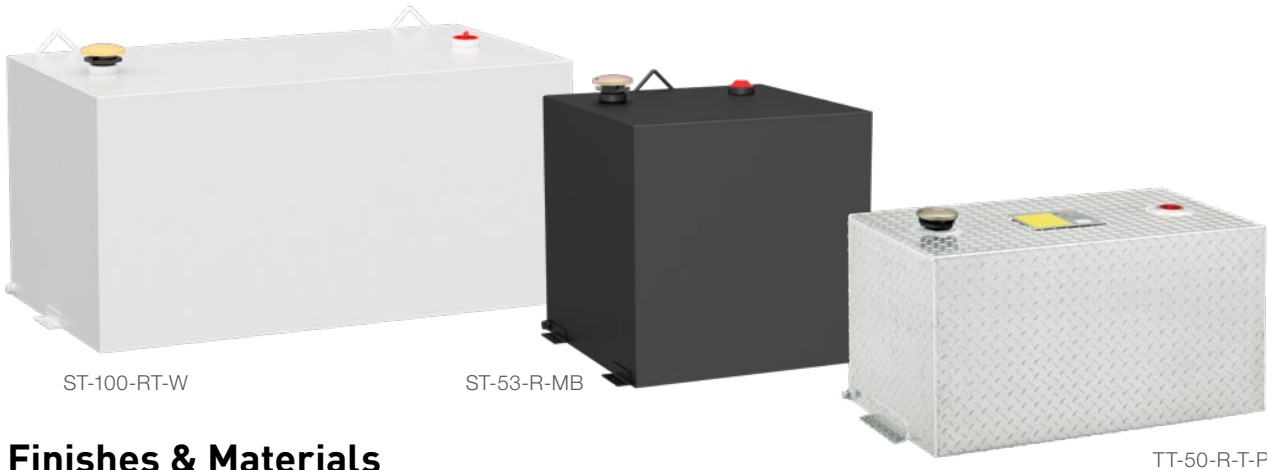
\*\* Add 2-3/4" to dimension (H) for vent cap clearance

# RECTANGULAR TANKS



## Key Features

- Mounts behind the truck cab, leaving the bed open for cargo
- Compatible with most short-bed trucks and gooseneck hitches (select models)
- See page 78 for a full list of product details



## Finishes & Materials

### Steel tanks

**Finish:**  
Matte black

**Material:**  
14-gauge steel

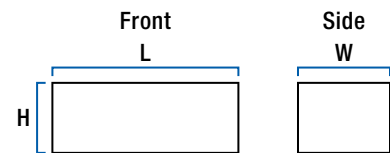
**Finish:**  
Semi-gloss white

**Material:**  
14-gauge steel

### Aluminum tanks

**Finish:**  
Bright aluminum

**Material:**  
0.125" aluminum



Part #	Finish	Gallons	Dimensions (inches)		
			L*	W	H**
<b>Steel Tanks</b>					
ST-45-R-W	Semi-gloss white	45	54	10.5	19.5
ST-45-R-MB	Matte black	45	54	10.5	19.5
ST-53-R-W*	Semi-gloss white	53	24	24	24
ST-53-R-MB*	Matte black	53	24	24	24
ST-100-RT-W*	Semi-gloss white	100	47	24	23
ST-100-RT-MB*	Matte black	100	47	24	23
<b>Aluminum Tanks</b>					
TT-45-R-T-P	Bright aluminum	45	54	10.5	19.5
TT-50-R-T-P*	Bright aluminum	50	36	19	19
TT-100-RT-T-P*	Bright aluminum	100	47	24	23

\* Add 3" to dimension (L) for mounting bracket clearance

\*\* Add 2-3/4" to dimension (H) for vent cap clearance

\* Indicates short-bed and gooseneck compatibility

