



5TH WHEEL HITCHES

FEATURED PRODUCTS

Scan QR code for current applications or visit curtmfg.com



CrossWing™ hitch

CrossWing™ is lightweight, easy to install, and features a unique connection that auto-adjusts to guide the kingpin into place.



Helux™ coil-spring pin box

Helux™ features coil-spring technology that absorbs chucking, jerking, jarring, and vibration at the truck-trailer coupling point.



S-Series™ slider

S-Series™ sliders provide extra turning clearance for short-bed trucks and feature an auto-latching mechanism.

PRODUCT INDEX



204

How to Mount a 5th Wheel Hitch



206

CrossWing™ 5th Wheels



209

A-Series™ 5th Wheels



212

PowerRide™ 5th Wheels



214

E-Series™ 5th Wheels



218

Puck System Rails & Legs



220

5th Wheel Sliders



221

Brackets & Base Rails



224

X5™ Adapter Plates



225

5th Wheel Accessories



228

Helux™ Pin Boxes



230

5th Wheel Electrical

5TH WHEEL HITCHES

CURT 5th wheel hitches are available in four distinct series. To determine the best configuration for the customer's vehicle, see 'Mounting a 5th wheel hitch' on page 204.



CROSSWING™

- Rated for 20,000 lbs. GTW, page 206
- Self-guiding head guides kingpin into place
- 65% lighter than most traditional 5th wheels



A-SERIES™

- Options rated up to 30,000 lbs. GTW, page 209
- Cast yoke with poly-torsion inserts for stable towing
- Self-resetting handle for fewer steps while coupling



POWERRIDE™

- Rated for 30,000 lbs. GTW, page 212
- Tough, professional-grade, 30K capacity with enhanced ergonomics and functionality
- Multi-directional, cast yoke head for a smooth ride



E-SERIES™

- Rated for 16,000 lbs. GTW, page 214
- Economic design for budget-conscious customers
- Dual-pivoting head with anti-rattle skid plate

Feature	CrossWing	A-Series	PowerRide	E-Series
Pivoting Mechanism	Articulating head	Cast yoke (two pivot points)	Cast yoke (two pivot points)	10° dual-pivoting head
Handle Operation	Single-throw, quarter-turn	Single-throw, self-resetting handle	Single-throw, self-resetting handle	Single handle
Jaw Type	Funnel system	Dual, interlocking	Dual, interlocking	Locking bar
Coupling Indicator	Visible contact surface	Yes	Yes	No
Head Removal	Not applicable	One-pin	One-pin	Two-pin
Compatible with Sidewinder or Turning Point	Yes (wedge required)	Yes (wedge required)	Yes (wedge required)	Yes (wedge required)
Capacities Available	20K	16K, 20K, 25K, 30K	30K	16K
Finish	Carbide black	Carbide black	Teridium grey	Carbide black
Warranty	Limited lifetime	Limited lifetime	Limited lifetime	Limited lifetime

5TH WHEEL MOUNTING OPTIONS

OEM Puck System Products

Puck system legs and adapters use a simple quarter-turn anchor system to easily and securely drop into the truck bed pucks built into many pickups today.

- Options available for Ford, GM, Nissan and Ram
- Compatible with most CURT 5th wheel hitches
- **See page 218 for long- and short-bed options**



5th Wheel Sliders

CURT sliders and rollers provide 12" of additional clearance between the truck cab and trailer, displacing the 5th wheel coupling point for making tight turns.

- Ideal for increasing clearance for short-bed trucks
- Available in 20K and 25K capacities
- **See page 220 for full features and benefits**



Custom Under-Bed Brackets

Each designed to fit a specific truck application, our custom brackets install in less time and provide a solid mount for our industry-standard base rails.

- Vehicle-specific fit reduces or eliminates drilling
- Protected by a rust-resistant liquid A-coat
- **See page 221 for application information**



Industry-Standard Base Rails

CURT industry-standard base rails accept any 5th wheel hitch with industry-standard mounting points. They are available in capacities of 25K and 40K.

- Durable powder coat finish in multiple color options
- Co-cured in a rust-resistant liquid A-coat
- **See page 221 for application information**



X5™ Adapter Plates

X5 adapter plates allow a gooseneck hitch to become a 5th wheel mount. They drop into the gooseneck hole and provide a set of industry-standard base rails.

- Compatible with EZr™, Double Lock™ and select competitor models
- Compatible with CURT 5th wheels up to 20,000 lbs.
- **See page 224 for full features and benefits**



5th Wheel Accessories

We offer a number of accessories to help improve 5th wheel operation and safety while towing, including 5th wheel wedges, locks, noise dampeners and more.

- Lube plates and sound pads for smooth operation
- Safety chain loops and locks for improved safety
- **See pages 225 - 227 for 5th wheel accessories**

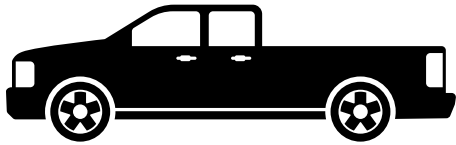


MOUNTING A 5TH WHEEL HITCH

There are several components that make up a 5th wheel hitch, and these components are determined by truck type and customer preferences. Answer the following questions to help choose the right hitch for your customer.

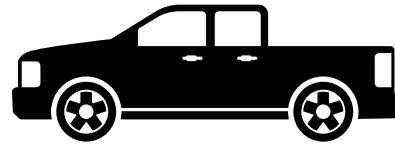
What Size is the Truck Bed?

The length of the truck bed will determine which type of mounting platform the 5th wheel hitch requires: legs or a slider. **Review each configuration and ensure adequate clearance before purchase.**



Long-bed (8 feet)

5th wheel legs are the standard 5th wheel mounting method. A long-bed truck should provide the necessary room for this option.



Short-bed (under 8 feet)

A 5th wheel slider is recommended on short-bed trucks. A slider adds clearance between the cab and the trailer when turning.

Measuring for a 5th wheel roller

1. Trailer width $\div 2 = X$
2. Distance from truck cab to coupling point = Y
3. Truck-trailer clearance: $Y - X = Z$

If Z is negative
you need a
5th wheel slider



Scan to
learn more

OEM PUCK SYSTEMS

Many trucks today, specifically from Ford, GM, Nissan and Ram, come with a built-in mounting platform in the bed called a puck system. A puck system makes installing a CURT 5th wheel hitch very easy.

Long-bed with OEM puck system

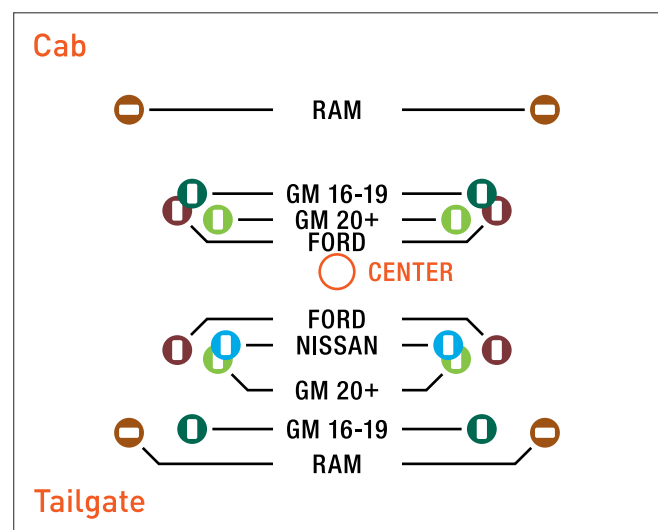
If the long bed has a puck system, select a 5th wheel hitch with OEM puck system legs or rails.

[See our complete kits starting on page 211.](#)

Short-bed with OEM puck system

If the short bed has a puck system, select an OEM puck system slider or rail option to mount the 5th wheel.

[See our complete kits starting on page 211.](#)



Puck system locations by manufacturer

PERMANENT RAIL SYSTEMS

If your customer prefers fixed rails in the truck bed, select a vehicle-specific, under-bed bracket kit and corresponding base rails to mount the 5th wheel hitch.

Long-bed

1. See page 221 for available bracket applications.
2. See page 221 for corresponding base rails.
3. Select a 5th wheel hitch from the 'Long-Bed Options' starting on page 210.

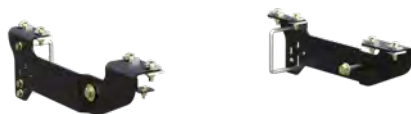
3. 5th wheel with legs



2. Above-bed base rails



1. Custom under-bed brackets



Short-bed

1. See page 221 for available bracket applications.
2. See page 221 for corresponding base rails.
3. Select a 5th wheel hitch from the 'Short-Bed Options' starting on page 210.

3. 5th wheel with slider



2. Above-bed base rails



1. Custom under-bed brackets



GOOSENECK TO 5TH WHEEL SYSTEMS

If your customer prefers the option of a gooseneck hitch, allowing for complete removal of the 5th wheel system and providing an unobstructed truck bed, select one of the options below.

CrossWing™ 5th wheel option

1. See page 250 for available gooseneck hitches.
2. See page 207 for CrossWing™ single-point.

2. CrossWing™ single-point 5th wheel



1. Gooseneck hitch or OEM puck system components



X5™ adapter bed rail option

1. See page 250 for available gooseneck hitches.
2. See page 224 for a corresponding X5 adapter.
3. Select a 5th wheel hitch starting on page 202.

3. 5th wheel with legs or slider



2. Above-bed X5 adapter



1. Under-bed gooseneck hitch kit



CROSSWING™

20K
GTW

LIGHTWEIGHT 5TH WHEEL HITCH

Scan to
learn more



Rail-Mount & Single-Point

- Premium steel construction offers robust 20,000-lb. capacity
- 65% lighter than most traditional 5th wheels
- Reinforced head connection point for superior strength and peace of mind
- Head channel guides kingpin into place for easier hookup
- Allows fore, aft and lateral head articulation when connecting on uneven terrain
- Three points of height adjustment (see table)
- Premium, carbide textured black finish
- Tested for safety in accordance with SAE J2638
- Not compatible with X5™ adapter



16600 - industry-standard rail hitch

See page 218 for puck system mounting options

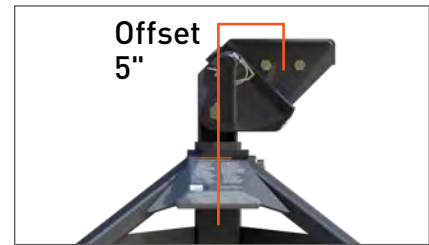
Product Features



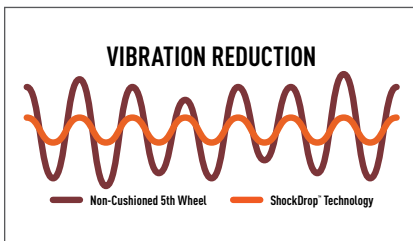
65% lighter than most traditional 5th wheel hitches (main body weighs up to 70 lbs.)



Unique coupling system eliminates guesswork by offering visible contact surface



Coupling point offsets 5" rearward for added turning clearance (16600 only)



Features patent-pending ShockDrop technology to reduce jerking and jarring for a more comfortable towing experience



Easy-to-reach release handle for ergonomic locking and unlocking operation of the head from the side of the truck bed



Head piece bolts onto kingpin, allowing head channel to guide the kingpin into place for easier hookup

Part #	Description	GTW / Vertical Load	Offset	Body Weight	Height Range
16600	Industry-standard rail hitch	20,000 / 5,000 lbs.	5"	60 lbs.	16-3/8" - 20-3/8"

For safety chain loop options see page 208



LIGHTWEIGHT WITH DIRECT-STRIKE COUPLING

20K GTW SINGLE-POINT 5TH WHEEL HITCH

Single-Point Specific

- Mounts over the top of most standard height 2-5/16" aftermarket and OEM gooseneck balls
- Bed protector supports distribute forces across the truck bed, adding support and reducing bed wear while protecting the bed from fore-and-aft abrasions during starts and stops (#16040)
- #16602 intended for flatbed applications, bed protector supports not required



16051 single-point kit



Mounts over the top of most standard height 2-5/16" aftermarket and OEM gooseneck balls



Coupling point offsets 8.4" rearward for added turning clearance (16051 / 16602 only)



Bed supports with polyethylene inserts and rubber membrane deter sliding and scuffing

Part #	Description	Intended Use	GTW / Vertical Load	Offset	Body Weight	Height Range
16051	Single-point hitch (16602) with bed protector supports (16040)	Standard truck beds	20,000 / 5,000 lbs.	8.4"	70 lbs.	16-3/8" - 20-3/8"
16602	Single-point hitch only	Flatbed truck beds	20,000 / 5,000 lbs.	8.4"	70 lbs.	16-3/8" - 20-3/8"
16040	Single-point hitch bed protector supports only	Replacement part	--	--	--	--

CROSSWING™ SAFETY CHAIN LOOPS

- Easy to install with provided hardware
- Wide openings accept heavy-duty hooks and chains
- Durable carbide black powder coat finish



Provides a solid attachment point for 5th wheel safety chains in your truck bed



Provides a solid attachment point for 5th wheel safety chains in your truck bed



16615



16000



16612



16614



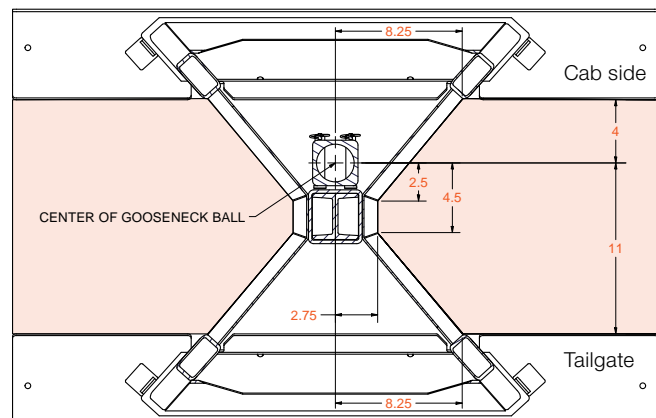
16613

Part #	GTW	For Use With	Includes	Finish
16612	20,000 lbs.	CrossWing industry-standard rail 5th wheel	Safety chain loops and CrossWing connection plate	Carbide black
16614	20,000 lbs.	CrossWing single-point 5th wheel	Safety chain loop plate and CrossWing connection plate	Carbide black
16613	20,000 lbs.	CrossWing industry-standard rail or single-point 5th wheel	CrossWing connection plate	Carbide black
16600	20,000 lbs.	All industry-standard base rails	Safety chain loops	Carbide black
16615	20,000 lbs.	CrossWing single-point 5th wheel	Safety chain loop plate	Carbide black

CROSSWING™ SINGLE-POINT SAFETY CHAIN LOOP COMPATIBILITY

If your safety chain loops fall within the shaded area, no additional safety chain accessories are required. See table below for CURT gooseneck hitch safety chain requirements.

Part #	Notes
60615, 60702, 60642, 60614, 60633, 61052, 65500	Can use existing gooseneck safety chain loops / anchors
60692, 60639	Can use existing gooseneck safety chain loops / anchors. GM 16 - 19 requires additional safety chain 16614 kit
60607, 60611, 60619, 60626, 60618, 60638, 61100	Requires additional safety chain 16614 kit



A-SERIES™

16k
GTW

A16™
HITCH

20k
GTW

A20™
HITCH

25k
GTW

A25™
HITCH

30k
GTW

A30™
HITCH

Product Details

- Up to 30,000 lbs. GTW / 7,500 lbs. vertical load
- Extra wide head opening for easier coupling
- Cast yoke and poly-torsion inserts suppress shock loads and reduce noise
- Constructed with a cast steel main body for a more precise build (A25 and A30 only)
- Offers three height adjustment positions to adapt to each unique truck bed
- Compatible with kingpin extension boxes, including common pivoting pin boxes (wedge #16992 required)
- Includes a polyethylene lube plate to eliminate messy grease deposits
- Protected by a highly durable carbide black powder coat finish
- Tested for safety in accordance with SAE J2638
- Patent# 8,827,298



16190

Operational Features



Lockable handle self-resets to the ready-to-couple position after the hitch is uncoupled

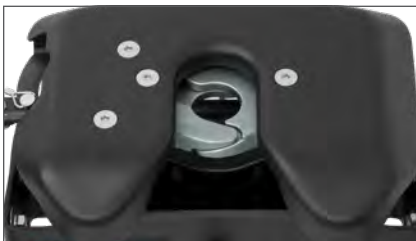


Fully articulating torsion head for controlled coupling and stable towing



Three-position coupling indicator clearly shows coupling status

Design Features



High-strength, interlocking jaws fully wrap the kingpin to minimize noise



Alignment pegs and accessible mounting bolts for simple leg-to-body attachment (excl A16)



Fast, one-pin head removal makes moving easy with smaller, lighter pieces

A-SERIES™ INDUSTRY-STANDARD RAIL KIT OPTIONS



16120 - A16 head with standard legs



16181 - A25 head with standard legs and base rails



16531 - A20 head with S20 slider



16651 - A25 head with S25 slider and base rails

Kit #	Head Series	GTW / Vertical Load	Kit Includes				Height Range
			Hitch with Standard Legs #	Head Only #	Slider Only #	Base Rails #	
Long-Bed Options							
16120	A16	16,000 / 4,000 lbs.	16120	--	--	--	13" - 17"
16121	A16	16,000 / 4,000 lbs.	16120	--	--	16200	14" - 18"
16140	A20	20,000 / 5,000 lbs.	16140	--	--	--	13" - 17"
16141	A20	20,000 / 5,000 lbs.	16140	--	--	16200	14" - 18"
16180	A25	25,000 / 6,250 lbs.	16180	--	--	--	13" - 17"
16181	A25	25,000 / 6,250 lbs.	16180	--	--	16200	14" - 18"
16190	A30	30,000 / 7,000 lbs.	16190	--	--	--	13" - 17"
16191	A30	30,000 / 7,000 lbs.	16190	--	--	16205	14" - 18"
Short-Bed Options							
16052	A16	16,000 / 4,000 lbs.	--	16520	16564	--	17-1/2" - 21-1/2"
16053	A16	16,000 / 4,000 lbs.	--	16520	16564	16204	18-1/2" - 22-1/2"
16531	A20	20,000 / 5,000 lbs.	--	16540	16564	--	17-1/2" - 21-1/2"
16631	A20	20,000 / 5,000 lbs.	--	16540	16564	16204	18-1/2" - 22-1/2"
16551	A25	25,000 / 6,250 lbs.	--	16580	16574	--	17-1/2" - 21-1/2"
16651	A25	25,000 / 6,250 lbs.	--	16580	16574	16204	18-1/2" - 22-1/2"

For a guide in selecting the mounting system for your customer's truck, see page 203

A-SERIES™ PUCK SYSTEM KIT OPTIONS

To learn more about puck systems see page 218



16070 - 2020 Chev / GMC legs with A30 head



16698 - Chev / GMC adapter with A20 & S20



16057 - GM / Ford base rail adapter with A25 & S25

Puck system products require a vehicle with a factory-installed 5th wheel prep package for installation

Make / Model	Bed	Years	GTW / Vertical Load	Kit #	5th Wheel Head		OEM Puck Products		Slider Only #	Height Range
					Head #	Series	Part #	Description		
Chevrolet / GMC										
Silverado Sierra 2500 HD 3500 HD	6.75'	20 - 25	25,000 / 6,250 lbs.	16057	16580	A25	16027	Rail adapter	16574	19" - 23"
			16,000 / 4,000 lbs.	16054*	16520	A16	16023*	Roller adapter	16564	19" - 23"
		16 - 19	20,000 / 5,000 lbs.	16698*	16540	A20	16023*	Roller adapter	16564	19" - 23"
			25,000 / 6,250 lbs.	16059	16580	A25	16050	Rail adapter	16574	20" - 24"
	8'	20 - 25	16,000 / 4,000 lbs.	16091	16520	A16	16029	Legs	--	13" - 17"
			20,000 / 5,000 lbs.	16092	16540	A20	16029	Legs	--	13" - 17"
			25,000 / 6,250 lbs.	16093	16580	A25	16029	Legs	--	13" - 17"
			30,000 / 7,000 lbs.	16070	16590	A30	16024	Legs	--	13" - 17"
		16 - 19	16,000 / 4,000 lbs.	16063	16520	A16	16025	Legs	--	13" - 17"
			20,000 / 5,000 lbs.	16064	16540	A20	16025	Legs	--	13" - 17"
		25,000 / 6,250 lbs.	16066	16580	A25	16025	Legs	--	13" - 17"	
Ford										
F-250 F-350 Super Duty	6.75'	11 - 25	25,000 / 6,250 lbs.	16057	16580	A25	16027	Rail adapter	16574	19" - 23"
	8'	11 - 25	16,000 / 4,000 lbs.	16033	16520	A16	16017	Legs	--	13" - 17"
			20,000 / 5,000 lbs.	16034	16540	A20	16017	Legs	--	13" - 17"
			25,000 / 6,250 lbs.	16036	16580	A25	16017	Legs	--	13" - 17"
Nissan										
Titan XD	8'	16 - 24	16,000 / 4,000 lbs.	16073	16520	A16	16026	Legs	--	13" - 17"
			20,000 / 5,000 lbs.	16074	16540	A20	16026	Legs	--	13" - 17"
Ram										
2500 3500	6.75'	13 - 25	16,000 / 4,000 lbs.	16056*	16520	A16	16022*	Roller adapter	16564	19" - 23"
			20,000 / 5,000 lbs.	16695*	16540	A20	16022*	Roller adapter	16564	19" - 23"
			25,000 / 6,250 lbs.	16058	16580	A25	16042	Rail adapter	16574	20" - 24"
	8'	13 - 25	16,000 / 4,000 lbs.	16043	16520	A16	16021	Legs	--	14" - 18"
			20,000 / 5,000 lbs.	16044	16540	A20	16021	Legs	--	14" - 18"
			25,000 / 6,250 lbs.	16046	16580	A25	16021	Legs	--	14" - 18"

* Continued while supplies last

POWERRIDE™

30K
GTW

30K
HITCH

Product Details

- Tested and rated to 30,000 lbs. GTW / 7,500 lbs. vertical load per SAE J2638 (must be used with #16205 base rails)
- Tough, professional-grade capacity and enhanced functionality
- Constructed with a cast steel main body for dependable strength
- Patented interlocking jaws for full kingpin contact and coupling security
- Premium, textured, dark grey teridium finish for lasting rust resistance
- Compatible with kingpin extension boxes, including common pivoting pin boxes (wedge required)
- 4" height adjustment for greater versatility versus 3" options
- No welding or fabrication required for installation
- Patent# 8,827,298



16320 - head with legs

Operational Features



Ergonomic, self-resetting handle for easier use from the side of the truck bed



Multi-directional, cast yoke head for a smooth ride and less strain on the truck



Three-position coupling indicator clearly shows coupling status

Design Features



Strategic grip points for ergonomic moving and handling



Integrated polyethylene plates for smooth operation, reduced wear and no grease



Fast, one-pin head removal makes moving easy with smaller, lighter pieces



POWER MEETS PERFORMANCE

POWERRIDE™ KIT OPTIONS

To learn more about puck systems see page 218



16321 - head with legs and 40K base rails



16594 - head with Ford puck legs

Industry-Standard Rail Options

Part #	Description	GTW / Vertical Load	Height Range
Long-Bed Options			
16320	Head with standard legs	30,000 / 7,500 lbs.	13" - 17"
16321	Head with standard legs (16320) and 40K base rails (16205)	30,000 / 7,500 lbs.	14" - 18"

For a guide in selecting the right 5th wheel for your customer's truck, see page 203

OEM Puck System Options

Make / Model	Style	Years	GTW / Vertical Load	Kit #	Head Only #	OEM Puck Leg #	Height Range
Chevrolet / GMC							
Silverado Sierra 2500 HD / 3500 HD	8' bed	20 - 25	30,000 / 7,500 lbs.	16592	16315	16030	13" - 17"
Ford							
F-250 / F-350 Super Duty	8' bed	11 - 25	30,000 / 7,500 lbs.	16594	16315	16032	13" - 17"
Ram							
2500 / 3500	8' bed	13 - 25	30,000 / 7,500 lbs.	16593	16315	16028	14" - 18"

Puck system products require a vehicle with a factory-installed 5th wheel prep package for installation

E-SERIES™

16K
GTW

E16™
HITCH

Product Details

- Up to 16,000 lbs. GTW / 4,000 lbs. vertical load
- Pivots on dual axes for 10° of lateral movement
- Automatically locks for easy, secure coupling
- Operates using a single handle with few moving parts
- Features an anti-rattle skid plate to help reduce noise
- Offers four height adjustment positions to adapt to each unique truck bed
- Compatible with kingpin extension boxes, including common pivoting pin boxes (wedge #16991 required)
- Protected by a highly durable carbide black powder coat finish
- Tested for safety in accordance with SAE J2638



Product Features



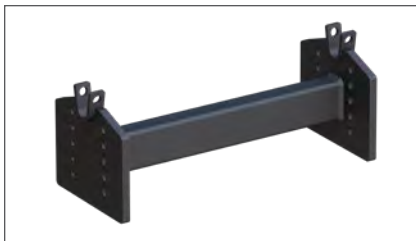
Pivots on dual axes for 10° of lateral movement



Features an anti-rattle skid plate to help reduce noise



Single-handle operation with auto-lock for easy, secure coupling



16505 head adapter allows CURT sliders to accept the 16515 E16 head (included in 16515, 16516 and 16616 kits)





RELIABLE, BUDGET-FRIENDLY TOWING

E-SERIES™ INDUSTRY-STANDARD RAIL KIT OPTIONS

See page 216 for puck system mounting options



16115 - E16 head with standard legs



16116 - E16 head with standard legs and base rails



16511 - E16 head with S20 slider



16611 - E16 head with S20 slider and base rails

Kit #	Head Series	GTW / Vertical Load	Kit Includes				Height Range
			Hitch with Standard Legs #	Head with Adapter Plate #	Slider Only #	Base Rails #	
Long-Bed Options							
16115	E16	16,000 / 4,000 lbs.	16115	--	--	--	13" - 17"
16116	E16	16,000 / 4,000 lbs.	16115	--	--	16200	14" - 18"
Short-Bed Options							
16511	E16	16,000 / 4,000 lbs.	--	16515	16564	--	14" - 17"
16611	E16	16,000 / 4,000 lbs.	--	16515	16564	16204	15" - 18"

For a guide in selecting the mounting system for your customer's truck, see page 203

E-SERIES™ PUCK SYSTEM KIT OPTIONS

To learn more about puck systems see page 218



16061 - 2019 Chev / GMC legs with E16 head



16031 - Ford legs with E16 head



16071 - Nissan legs with E16 head



16697 - Chev / GMC roller adapter with E16 head & S20 slider



16041 - Ram legs with E16 head



16694 - Ram roller adapter with E16 head and S20 slider

Puck system products require a vehicle with a factory-installed 5th wheel prep package for installation

Make / Model	Bed	Years	GTW / Vertical Load	Kit#	5th Wheel Head		OEM Puck Products		Slider Only #	Height Range
					Head Only #	Series	Part #	Description		
Chevrolet / GMC										
Silverado / Sierra 2500 HD / 3500 HD	6.75'	16 - 19	16,000 / 4,000 lbs.	16697*	16515	E16	16023*	Roller adapter	16564	16" - 19"
	8'	20 - 25	16,000 / 4,000 lbs.	16097	16515	E16	16029	Legs	--	11-1/2" - 13-1/2"
		16 - 19	16,000 / 4,000 lbs.	16061	16515	E16	16025	Legs	--	11-1/2" - 13-1/2"
Ford										
F-250 F-350 Super Duty	8'	11 - 25	16,000 / 4,000 lbs.	16031	16515	E16	16017	Legs	--	11-1/2" - 13-1/2"
Nissan										
Titan XD	8'	16 - 24	16,000 / 4,000 lbs.	16071	16515	E16	16026	Legs	--	11-1/2" - 13-1/2"
Ram										
2500 / 3500	6.75'	13 - 25	16,000 / 4,000 lbs.	16694*	16515	E16	16022*	Roller adapter	16564	16" - 19"
	8'	13 - 25	16,000 / 4,000 lbs.	16041	16515	E16	16021	Legs	--	12-1/2" - 15-1/2"

*Continued while supplies last



PUCK SYSTEM COMPONENTS

FOR TRUCKS WITH OEM PREP PACKAGE

- Allows CURT 5th wheel hitches to fit an OEM puck system
- Quarter-turn anchors allow for quick installation and removal
- Anchors can be adjusted to eliminate chocking between the legs or slider and the puck system
- Tested for safety in accordance with SAE J2638
- Highly durable carbide black or teridium grey powder coat finish
- Capacity limited to lowest-rated towing component



How to install OEM puck system products



Step 1 - Drop OEM-compatible product into the truck bed puck system



Step 2 - Close the anchor levers to lock the 5th wheel into place



Step 3 - Secure levers with attached safety pins and you're ready to hitch up your trailer

OEM PUCK SYSTEM BASE RAIL ADAPTERS

- Convert the truck's puck system to industry-standard 5th wheel base rails
- No hitch leg reconfiguring or disassembly required



Easily transfer existing hitch from previous truck to new puck-equipped truck



Industry-standard rails accept most 5th wheel legs and rollers



16027 base rail adapter shown with A20 head and S20 slider (not included)

Make / Model	Style	Years	GTW	Adds Height	Part #
Chevrolet / GMC					
Silverado / Sierra 2500 HD / 3500 HD	With 5th wheel prep package	20 - 25	25,000 lbs.	2-1/4"	16027
		16 - 19	25,000 lbs.	2-1/4"	16050
Ford					
F-250 / F-350 Super Duty	With 5th wheel prep package	11 - 25	25,000 lbs.	2-1/4"	16027
Ram					
2500 / 3500	With 5th wheel prep package	13 - 25	25,000 lbs.	2-3/4"	16042



STREAMLINED 5TH WHEEL INSTALLATION

OEM PUCK SYSTEM 5TH WHEEL HITCH LEGS & ROLLER PRODUCTS

See our kitted options on pages 211, 213 and 216



Puck system products require a vehicle with a factory installed 5th wheel prep package for installation

Make / Model	Style	Years	GTW	OEM Puck Products		
				Part #	Description	Finish
Chevrolet / GMC						
Silverado / Sierra 2500 HD / 3500 HD	6.75' bed with 5th wheel prep pkg	16 - 19	20,000 lbs.	16023*	Roller adapter	Carbide black
	8' bed with 5th wheel prep pkg	20 - 25	30,000 lbs.	16024	Legs	Carbide black
			30,000 lbs.	16030	Legs	Teridium grey
			25,000 lbs.	16029	Legs	Carbide black
			25,000 lbs.	16025	Legs	Carbide black
Ford						
F-250 / F-350 Super Duty	8' bed with 5th wheel prep pkg	11 - 25	24,000 lbs.	16017	Legs	Carbide black
			30,000 lbs.	16032	Legs	Teridium grey
Nissan						
Titan XD	8' bed with 5th wheel prep pkg	16 - 24	20,000 lbs.	16026	Legs	Carbide black
Ram						
2500 / 3500	6.75' bed with 5th wheel prep pkg	13 - 25	24,000 lbs.	16022*	Roller adapter	Carbide black
	8' bed with 5th wheel prep pkg	13 - 25	25,000 lbs.	16021	Legs	Carbide black
			30,000 lbs.	16028	Legs	Teridium grey

* Continued while supplies last



QUIET, SOLID DESIGN VIRTUALLY ELIMINATES CHUCKING

S-SERIES™

20K
GTW
S20™
SLIDER

25K
GTW
S25™
SLIDER

See our kitted options
on pages 210 - 216

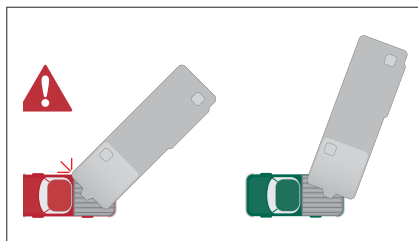
Product Details

- Up to 25,000 lbs. GTW / 6,250 lbs. vertical load
- Smooth sliding between positions with no binding
- Automatically latches in both directions so you only have to exit the truck once
- Easy-to-reach lever arm for ergonomic operation
- Lever lift motion for user-friendly functionality vs. traditional pull-out style
- Tested for safety in accordance with SAE J2638
- Mount to all industry-standard base rails
- Protected by a highly durable carbide powder coat finish



16574

Greater maneuverability



Provides 12" of displacement for the coupling point, adding turning clearance for short-bed trucks and avoiding trailer obstruction

Added convenience



Handle automatically locks into place when you drive forward, eliminating the need to exit the truck multiple times during hookup

Factory assembled



Ships fully assembled for fast, easy installation onto any industry-standard rails

Part #	GTW	Slider Series	Finish
16564	20,000 lbs.	S20	Carbide black
16574	25,000 lbs.	S25	Carbide black

PERMANENT RAIL SYSTEMS

CUSTOM UNDER-BED BRACKETS

Custom brackets provide a set of permanent 5th wheel base rails in the truck bed. If your customer prefers removable rails for no obstructions in the truck bed, [see page 224 for our gooseneck adapter options.](#)

Custom brackets

- Designed to be used in combination with industry-standard base rails (see application guide for part numbers)
- Vehicle-specific applications reduce or eliminate frame drilling, cutting installation time in half
- Protected by a rust-resistant liquid A-coat
- Includes mounting hardware
- Tested according to SAE J2638 specifications



16412 brackets shown with 16204 base rails

Semi-custom brackets

- Designed to be used in combination with CURT universal brackets and / or base rails (see application guide for part numbers)
- All semi-custom brackets require drilling to be installed

Step 1 - Pick vehicle-specific brackets starting on page 222

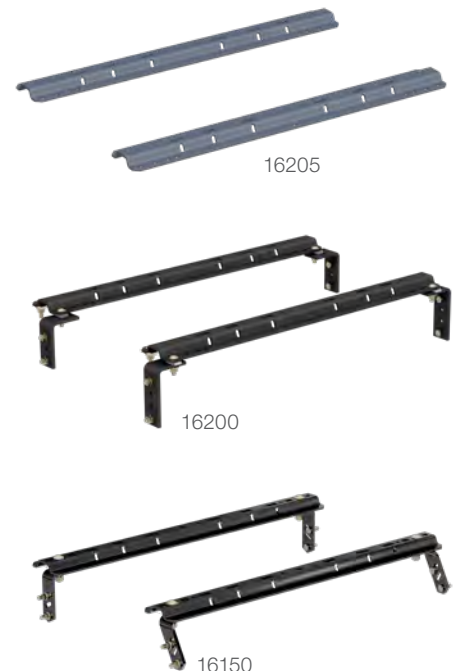
Step 2 - Select the base rails by finish preference & capacity

Step 3 - Start on page 202 to select a 5th wheel hitch

UNIVERSAL UNDER-BED BRACKETS & INDUSTRY-STANDARD BASE RAILS

Weight capacities limited to the lowest rated towing component

- **Industry-exclusive 40K option**
- Intended for vehicle applications not covered by CURT custom brackets
- Compatible with CURT and most competitive 5th wheel hitches, sliders and gooseneck adapters
- All universal brackets require drilling or welding to be installed
- Tested according to SAE J2638 specifications



Kit #	Base Rails Only #	Brackets & Hardware #	Capacity	Finish	Description
Base Rails & Brackets					
16150	--	--	25,000 lbs.	Gloss black	Two rails, 4-bolt
16100	16104	16101	25,000 lbs.	Gloss black	Two rails, 10-bolt
16200	16204	16101	25,000 lbs.	Carbide black	Two rails, 10-bolt
--	16205	--	40,000 lbs.	Teridium grey	Two rails, 10-bolt
Replacement Hardware					
16111	Installation hardware kit				
16103	Wheel bolts, qty 8 (for installing new brackets) Available in 10-pack #16103010 (10 sets of eight bolts)				



40K RAILS FULLY TESTED TO SAE J2638

APPLICATION GUIDE

Make / Model	Style	Years	Bracket Type	Bracket #	Drilling	Base Rails		
						40K Teridium#	25K Carbide #	25K Gloss #
Chevrolet								
Silverado 1500	Excl. 5.5' bed	19 - 25	Custom	16469	No	--	16204	16104
	--	07 - 18	Custom	16400	No	--	16204	16104
	--	99 - 06	Custom	16418	Yes	--	16204	16104
Silverado 1500 Classic	--	07 - 07	Custom	16418	Yes	--	16204	16104
Silverado 1500 LD	--	19 - 19	Custom	16400	No	--	16204	16104
Silverado 1500 LTD	Excl. 5.5' bed	22 - 22	Custom	16469	No	--	16204	16104
Silverado 2500	Excl. Cab & Chassis	99 - 04	Custom	16418	Yes	--	16204	16104
Silverado 2500 HD	--	20 - 25	Custom	16429 ¹	No	16205	16204	16104
		11 - 19	Custom	16411	No	--	16204	16104
	Excl. Cab & Chassis	01 - 10	Custom	16418	Yes	--	16204	16104
Silverado 2500 HD Classic	Excl. Cab & Chassis	07 - 07	Custom	16418	Yes	--	16204	16104
Silverado 3500	Excl. Cab & Chassis	01 - 06	Custom	16418	Yes	--	16204	16104
Silverado 3500 Classic	Excl. Cab & Chassis	07 - 07	Custom	16418	Yes	--	16204	16104
Silverado 3500 HD	Excl. Cab & Chassis	20 - 25	Custom	16429 ¹	No	16205	16204	16104
		11 - 19	Custom	16411	No	--	16204	16104
		08 - 10	Custom	16418	Yes	--	16204	16104
Dodge								
Ram 1500	--	09 - 10	Semi-Cust.	16306	Yes	--	16204	16104
	Extended crew cab	06 - 08	Custom	16420	No	--	16204	16104
	Excl. extended crew cab	02 - 08	Custom	16419	No	--	16204	16104
	--	02 - 08	Semi-Cust.	16303	Yes	--	16200	16100
Ram 2500 / 3500	Excl. Cab & Chassis	03 - 10	Custom	16420	No	--	16204	16104
		03 - 09	Semi-Cust.	16301	Yes	--	16200	16100

¹ Brackets rated up to 30,000 lbs. when used with #16205 (40K) base rails

Applications continued on the following page

Make / Model	Style	Years	Bracket Type	Bracket #	Drilling	Base Rails		
						40K Teridium#	25K Carbide #	25K Gloss #
Ford								
F-150	Excl. Lightning or Police Responder	22 - 24	Custom	16911	No	--	16204	16104
	Excl. Police Responder	15 - 21	Custom	16911	No	--	16204	16104
	Excl. 5.5' bed	04 - 14	Custom	16441	No	--	16204	16104
	--	04 - 11	Semi-Cust.	16300	Yes	--	16204	16104
		97 - 03	Custom	16437	No	--	16204	16104
F-150 Heritage	--	04 - 04	Custom	16437	No	--	16204	16104
F-250	--	97 - 99	Custom	16437	No	--	16204	16104
F-250 / F-350 Super Duty	Excl. Cab & Chassis	23 - 24	Custom	16432 ¹	No	--	16204	16104
		17 - 22	Semi-Cust.	16432 ¹	No	16205	16204	16104
		11 - 16	Custom	16424	No	--	16204	16104
		05 - 10	Custom	16448	Yes	--	16204	16104
		99 - 04	Custom	16443	Yes	--	16204	16104
F-450 Super Duty	Excl. Cab & Chassis	17 - 22	Semi-Cust.	16432 ¹	No	16205	16204	16104
		11 - 16	Custom	16424	No	--	16204	16104
		08 - 10	Custom	16448	Yes	--	16204	16104
GMC								
Sierra 1500	Excl. 5.5' bed	19 - 25	Custom	16469	No	--	16204	16104
	Excl. Denali	07 - 18	Custom	16400	No	--	16204	16104
	--	99 - 06	Custom	16418	Yes	--	16204	16104
Sierra 1500 Classic	--	07 - 07	Custom	16418	Yes	--	16204	16104
Sierra 1500 Limited	Excl. 5.5' bed	22 - 22	Custom	16469	No	--	16204	16104
	--	19 - 19	Custom	16400	No	--	16204	16104
Sierra 2500	Excl. Cab & Chassis	99 - 04	Custom	16418	Yes	--	16204	16104
Sierra 2500 HD	--	20 - 25	Custom	16429 ¹	No	16205	16204	16104
		11 - 19	Custom	16411	No	--	16204	16104
		01 - 10	Custom	16418	Yes	--	16204	16104
Sierra 2500 HD Classic	Excl. Cab & Chassis	07 - 07	Custom	16418	Yes	--	16204	16104
Sierra 3500	Excl. Cab & Chassis	01 - 06	Custom	16418	Yes	--	16204	16104
Sierra 3500 Classic	Excl. Cab & Chassis	07 - 07	Custom	16418	Yes	--	16204	16104
Sierra 3500 HD	Excl. Cab & Chassis	20 - 25	Custom	16429 ¹	No	16205	16204	16104
		11 - 19	Custom	16411	No	--	16204	16104
		07 - 10	Custom	16418	Yes	--	16204	16104
Nissan								
Titan	--	04 - 24	Custom	16470	Yes	--	16204	16104
Ram								
1500	Excl. TRX or multifunction tailgate	19 - 25	Custom	16307	No	--	16204	16104
	With factory air suspension	13 - 17	Custom	16444	Yes	--	16204	16104
	Coil springs, excl. Limited	11 - 18	Semi-Cust.	16306	Yes	--	16204	16104
1500 Classic	Coil springs	19 - 24	Semi-Cust.	16306	Yes	--	16204	16104
2500	Excl. 5th wheel prep pkg	14 - 24	Custom	16427	No	--	16204	16104
	--	13 - 13	Custom	16430 ¹	Yes	16205	16204	16104
		11 - 12	Custom	16420	No	--	16204	16104
3500	Excl. 5th wheel prep pkg	13 - 24	Custom	16430 ¹	Yes	16205	16204	16104
	Excl. Cab & Chassis	11 - 12	Custom	16420	No	--	16204	16104
Toyota								
Tundra	6.5' bed, excl. extended crew cab	07 - 21	Custom	16468	Yes	--	16204	16104
	Excl. extended crew cab	07 - 20	Semi-Cust.	16304	Yes	--	16200	16100

¹ Brackets rated up to 30,000 lbs. when used with #16205 (40K) base rails

GOOSENECK TO 5TH WHEEL

20K
GTW

X5™ GOOSENECK TO 5TH WHEEL ADAPTER PLATES

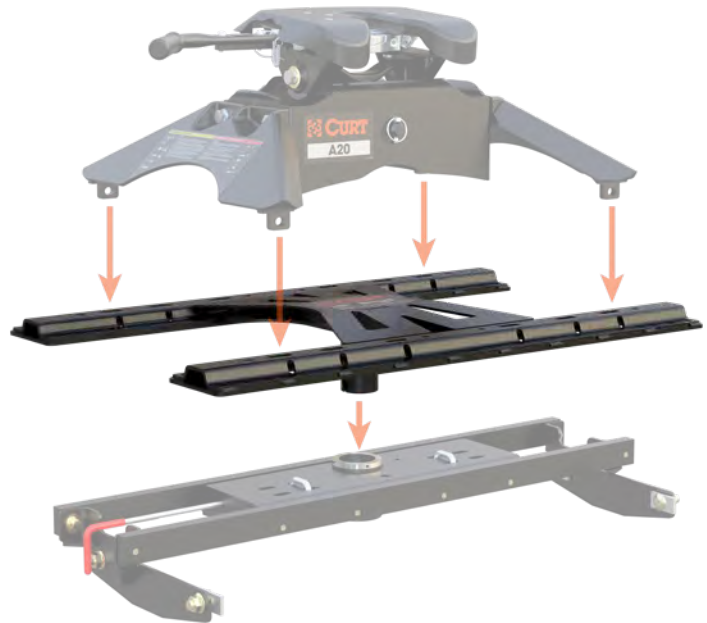
See page 207 for CrossWing™ single-point

The X5 adapter plate allows a gooseneck hitch to become a mounting platform for a 5th wheel hitch. The X5 shank simply drops into the gooseneck ball hole and instantly provides a set of industry-standard 5th wheel base rails.

See the table below for gooseneck hitch compatibility.

Product Details

- Converts a gooseneck hitch into a set of standard 5th wheel base rails
- No assembly or tools required – just drop it in, lock it and go
- For use with CURT and competitive 5th wheels up to 20,000 lbs.
- Capacity limited to lowest-rated towing component
- Accepts any standard CURT 5th wheel legs or slider (excludes OEM puck system products)
- Durable carbide black powder coat finish
- Co-cured in a rust-resistant liquid A-coat
- **Not compatible with OEM-style gooseneck hitches or turret-style pin boxes, such as Sidewinder™ or Turning Point™**
(Trademark of First Brands Group™)



Step 1 - Pick a gooseneck hitch. If your customer has a gooseneck hitch, see step 2

Step 2 - Select the corresponding X5 adapter plate to match the gooseneck

Step 3 - See page 202 for our 5th wheel hitch selection guide



16210 - Fits CURT original Double Lock



16220 - Fits CURT Double Lock EZr



16310 - Fits B&W Turnoverball

Part #	Fits	Capacity	Shank Style
16210	CURT Double Lock 60607 and 60615	20,000 lbs.	Round shank
16220	CURT Double Lock EZr 60611 and 60619	20,000 lbs.	Round shank
16310	B&W Turnoverball® (excl. shallow models; shank hole is 2-1/4" from plate surface)	20,000 lbs.	Square shank

See page 262 for original Double Lock gooseneck hitches. See page 260 for Double Lock EZr gooseneck hitches

5TH WHEEL ACCESSORIES

5TH WHEEL SAFETY CHAIN LOOPS

See page 208 for CrossWing™ compatibility

- Easy to install with provided hardware
- Wide openings accept heavy-duty hooks and chains
- Durable carbide black powder coat finish



Provides a solid attachment point for 5th wheel safety chains in your truck bed



Universal design fits all industry-standard 5th wheel base rails



16615



16600



16612



16614

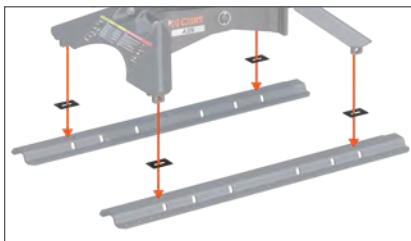


16613

Part #	GTW	For Use With	Includes	Finish
16612	20,000 lbs.	CrossWing industry-standard rail 5th wheel	Safety chain loops and CrossWing connection plate	Carbide black
16614	20,000 lbs.	CrossWing single-point 5th wheel	Safety chain loop plate and CrossWing connection plate	Carbide black
16613	20,000 lbs.	CrossWing industry-standard rail or single-point 5th wheel	CrossWing connection plate	Carbide black
16600	20,000 lbs.	All industry-standard base rails	Safety chain loops	Carbide black
16615	20,000 lbs.	CrossWing single-point 5th wheel	Safety chain loop plate	Carbide black

5TH WHEEL RAIL SOUND-DAMPENING PADS

- Helps eliminate clanking and rattling
- Compatible with all industry-standard 5th wheel legs, sliders and base rails (excluding OEM puck system products)
- Tough neoprene rubber



Place between a 5th wheel hitch and base rails to dampen sound



16900

16901

Bulk #	Pkg #	Quantity
16900	16901	4

5TH WHEEL HITCH LOCK

- Extra-long 1/2" diameter pin fits all industry-standard base rails
- Rust-free aluminum housing with a durable black powder coat finish
- Weather-resistant dust cap helps prevent internal corrosion
- Easy-to-access, 1/8-turn lock activation
- Includes two keys for added convenience



23256



Key slot angled upward for easier ergonomic access



Locks a 5th wheel hitch into the rails, taking the place of a pin & clip



Installs tight against the lip of the base rail for enhanced security

Part #	Pin Diameter	Finish
23256	1/2"	Black powder-coated aluminum, zinc plated pin

5TH WHEEL LUBE PLATES

- Reduces normal wear and tear when towing
- Eliminates messy grease deposits that trap dirt on hitch head plate
- 12" plate features self-cleaning grooves to maintain good lubrication
- Constructed from tough polyethylene



16722



16721



Adds a buffer between 5th wheel head plate and kingpin box



Fits any standard kingpin, simply snap it into place before coupling



16721025

Part #	25-Pack Tray #	Description
16721	16721025	10" 5th wheel lube plate
16722	--	12" slotted 5th wheel lube plate

KINGPIN LOCK

- Built with an aluminum body for corrosion resistance
- Two keys included for added convenience
- Space-saving, full-color retail packaging



Locks on to 5th wheel kingpin to deter theft of 5th wheel trailer



Universal design fits most 5th wheel trailer kingpins



23255

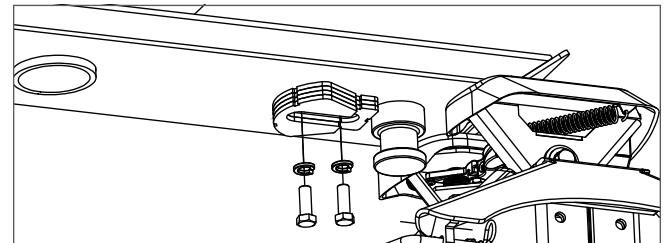
Part #	Description	Finish
23255	5th wheel trailer kingpin lock	Chrome-plated steel and powder-coated aluminum



5TH WHEEL WEDGES

A rotating 5th wheel pin box creates an alternative pivot point for the 5th wheel connection, providing the 5th wheel trailer with a wider turn radius. However, because of this secondary pivot point, the primary pivot point must be fixed to keep the trailer from wandering. A 5th wheel wedge bolts onto the pin box, locks up the kingpin and keeps it from swiveling.

- Allows CURT 5th wheel hitches to be used with rotating pin boxes, such as Sidewinder™ and Turning Point®
- Bolts on behind the kingpin of the pin box to restrict movement between 5th wheel hitch and pin box
- Durable carbide black powder coat finish
- Made in USA (may include imported hardware)



Restricts movement between the 5th wheel hitch and the rotating pin box, such as Sidewinder or Turning Point



16991



16992



16994

CURT 5th Wheel Hitch Model	Fits Rotating Pin Box Models	Part #
E-Series (page 214)	Turning Point (all) and 5th Airborne Sidewinder models excluding #68220	16991
A-Series (page 209)	Turning Point (all) and 5th Airborne Sidewinder models excluding #68220	16992
	Reese Sidewinder #68220 only	16994
CrossWing (page 206)	Turning Point (all) and 5th Airborne Sidewinder models excluding #68220	19283
	Reese Sidewinder #68220 only	19288



19288



19283

HELUX™ SERIES COIL SPRING PIN BOXES

NEW

- Reduces aggressive bouncing and shifting to increase the lifespan of the RV
- Prevents excessive rattling and vibrations from road hazards and degrading of RV hardware
- Easy-to-use coil spring technology and shock absorbers are maintenance free once installed
- Premium coil technology is more dependable and requires less maintenance than air systems
- Compatible with Rhino™ Box
- Tested for safety in accordance with SAE J2638



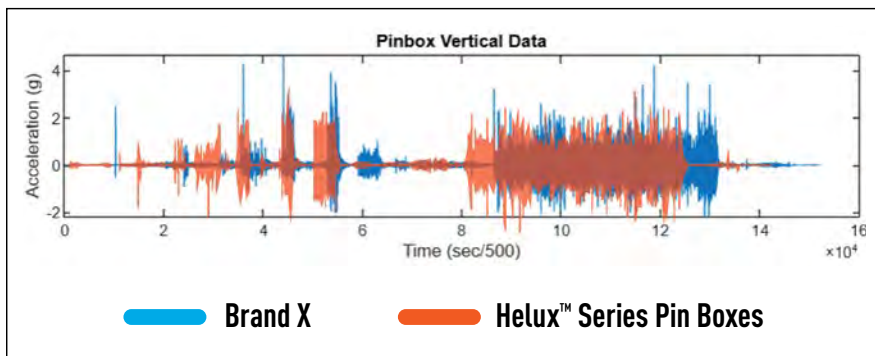
Significantly reduces jerking and jarring over traditional fixed pin boxes



Coil spring and shock technology extend life over torsion or air bags



Certified and approved on Lippert RV frames - will not void warranty



Part #	Capacity	Pin Weight	Minimum Pin Weight	GVWR Range
2024044570 N	24,000 lbs.	4,850 lbs.	2,570 lbs.	16701 - 19400
2024044571 N	24,000 lbs.	5,400 lbs.	2,860 lbs.	19401 - 21600
2024044572 N	24,000 lbs.	6,200 lbs.	3,290 lbs.	21601 - 24000



5TH WHEEL ELECTRICAL

CUSTOM WIRING EXTENSION HARNESSSES

- Routes a 7-way RV blade socket into truck bed while retaining use of rear socket
- Simple plug-and-play design eliminates the need for cutting or splicing
- Allows for easy connection of gooseneck wiring
- Requires 2-1/8" hole saw for installation
- Neoprene well nuts isolate steel bolts from aluminum surfaces (select models)
- **See page 162 for more information**



Right-angle plug for easy installation



7' routes socket into rear of the truck bed



10' routes socket closer to truck cab

7-WAY RV BLADE EXTENSION HARNESS

- Routes existing 7-way RV blade socket into full-size pickup truck bed (7' length)
- Universal size fits any 7-way RV blade socket
- Allows for easy connection of gooseneck wiring
- **See page 164 for more information**



REPLACEMENT 7-WAY RV BLADE HARNESSSES

- Replaces the trailer-end plug of any 7-way harness
- Wires protected by heavy-duty, weather-resistant cable
- Cold-weather harnesses feature soft thermoplastic elastomer casing to remain flexible in cold temperatures (temperature rating from -40°F up to 221°F)
- **See page 165 for more information**



BRAKE CONTROLLERS

For a full list of benefits see pages 144 - 147

- Easily calibrated for all towing needs
- Proportional and time-delay units available



51200

Echo® in-line
Hidden under vehicle
Bluetooth-enabled
Smartphone-ready



51190

Echo® under-dash
Hidden under dash
Bluetooth-enabled
Smartphone-ready



51180

Echo® mobile
Portable design
Bluetooth-enabled
Smartphone-ready



51170

Spectrum™
Integrated OE look
Hidden main body
Tri-color LED display



51146

TriFlex™ NEXT
Tri-axis sensitivity
Auto adjustment
Digital display



51126

Discovery™ NEXT
Time-delay
Adjustable output
Digital display



51116

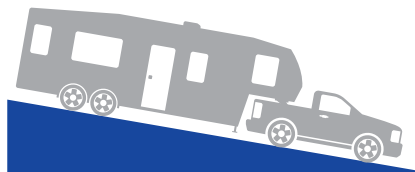
Venturer™ NEXT
Time-delay
Adjustable output
Ramp-up LED display

Dynamic power adjustment

Applies to Echo, Spectrum, Assure and TriFlex



4.0 ▶ 3.2 Automatic power reduction for incline



4.0 ▶ 5.3 Automatic power increase for decline



Tri-axis circuit detects inertia on three planes for greater sensitivity over dual-axis models

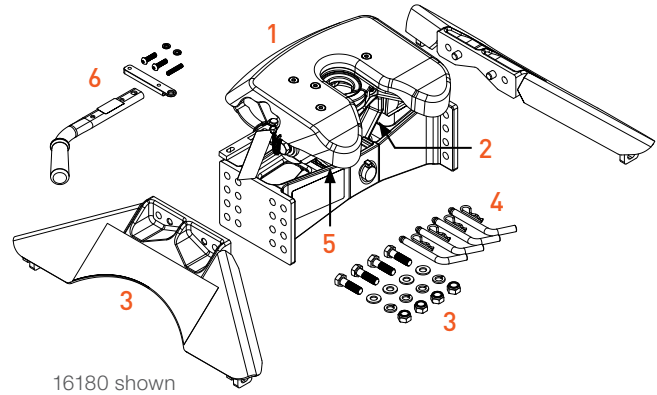
Note: Values represented are for illustration only. The actual preset and adaptive values may differ from those shown here.

Name	Pkg #	6-Pack #	Axles	Brakes	Activation Method	Display	Mount Angle	Sleep Mode	Electric Over Hydraulic	Warranty
Echo in-line	51200	--	1 - 4	2 - 8	Proportional	Phone app	Any	Yes	No	Ltd lifetime
Echo under-dash	51190	--	1 - 4	2 - 8	Proportional	Phone app	Any	Yes	No	Ltd lifetime
Echo mobile	51180	--	1 - 2	2 - 4	Proportional	Phone app	Any	N/A	No	Ltd lifetime
Spectrum	51170	--	1 - 4	2 - 8	Proportional	Tri-color LED	Any	N/A	No	Ltd lifetime
TriFlex NEXT	51146	511466 N	1 - 4	2 - 8	Proportional	LED digital	Any	Yes	No	Ltd lifetime
Discovery NEXT	51126	511266 N	1 - 4	2 - 8	Time-delay	LED digital	Any	Yes	Yes	Ltd lifetime
Venturer NEXT	51116	511166 N	1 - 3	2 - 6	Time-delay	LED digital	Any	Yes	Yes	Ltd lifetime

REPLACEMENT PARTS

A-SERIES™ 5TH WHEEL REPLACEMENT PARTS

Fig #	Part #	Description	Fits
1	16520	A16 head only	16120
1	16540	A20 head only	16140
1	16580	A25 head only	16180
1	16590	A30 head only	16190
2	19211	A16 yoke support pin	16120
2	19213	A20 yoke support pin	16140
2	19214	A25 & A30 yoke support pin	16180, 16190
3	16920	A16 leg kit and hardware	16120
3	16906	A20 leg kit and hardware	16140
3	16907	A25 & A30 leg kit and hardware	16180, 16190
4	16902	Rail pins & clips, qty 4	All
5	19287	Torsion insert	All
6	19212	Handle assembly: - Release handle, qty 1 - Handle grip, qty 1 - Handle lock bar, qty 1 - M8 bolt head cap screw, qty 2 - Latch spring, qty 1 - M8 lock washer, qty 2	All



E-SERIES™ 5TH WHEEL REPLACEMENT PARTS

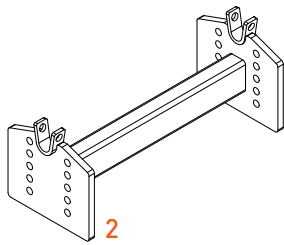
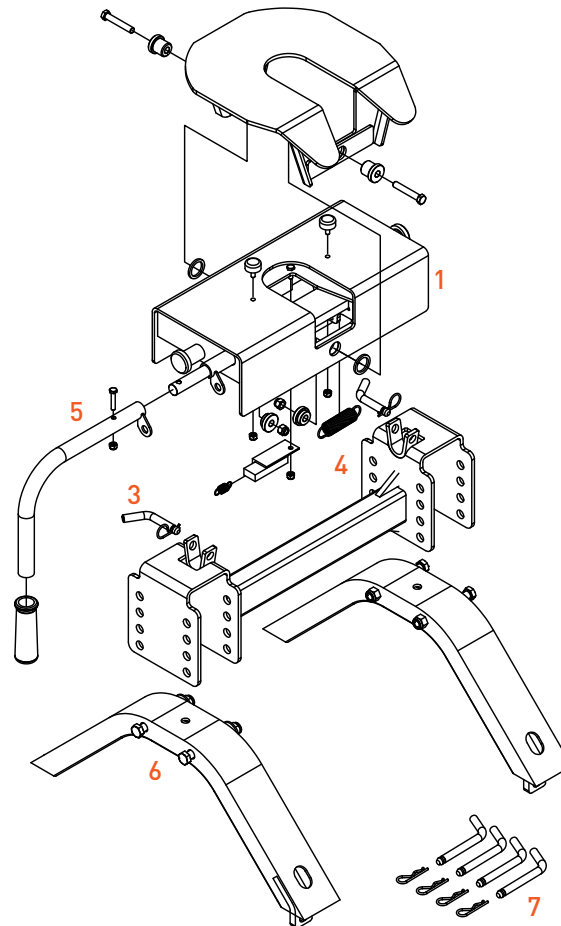
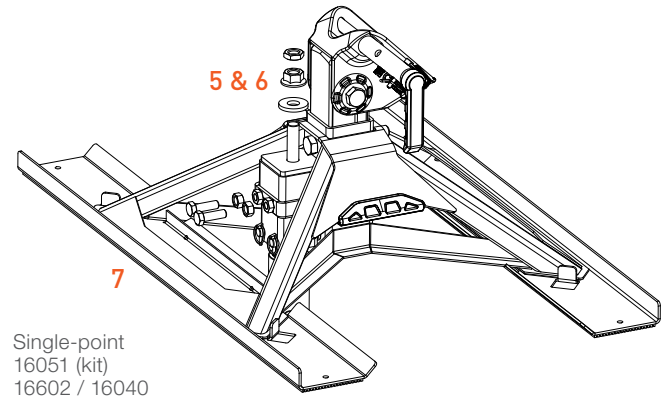
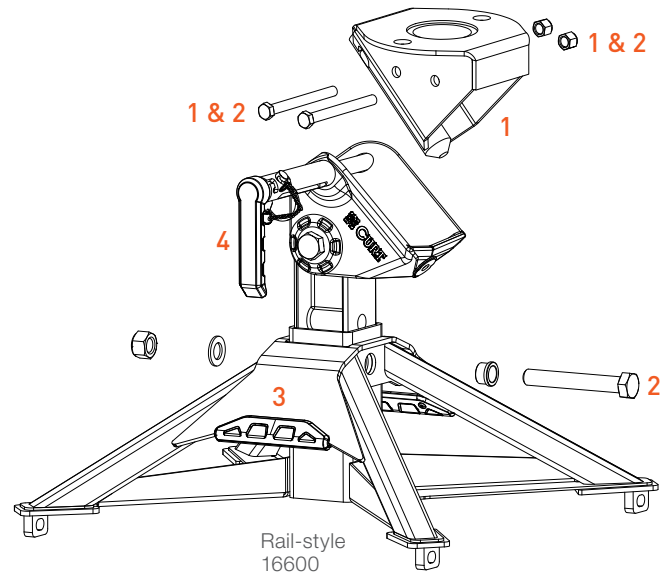


Fig #	Part #	Description	Fits
1	16515	E16 head with 16505 adapter	16115
2	16505	Head adapter	16115
3	19226	Head pinning kit: - Pin, qty 2 - Clip, qty 2	16115
4	19227	Head spring kit - Slide lock spring, qty 1 - Slide spring, qty 1	16115
5	19228	Handle assembly: - Handle, qty 1 - Handle grip, qty 1 - M6 hex head cap screw, qty 1 - M6 nylock nut, qty 1	16115
6	16903	E16 leg kit and hardware	16115
7	16902	Rail pins & clips, qty 4	16115



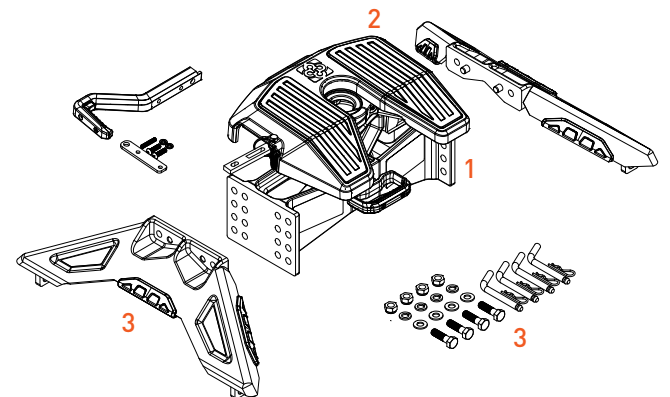
CROSSWING™ 5TH WHEEL REPLACEMENT PARTS

Fig #	Part #	Description	Fits
1	19295	Kingpin coupling attachment and installation hardware: - Upper weldment, qty 1 - 1/2" hex bolts, qty 2 - 1/2" nylock nuts, qty 2	16600 16051 16602
2	19286	Replacement hardware: - M20 hex bolt, qty 1 - Bushing, qty 1 - M20 flat washer, qty 1 - M20 nylock nut, qty 1 - 1/2" hex bolts, qty 2 - 1/2" nylock nuts, qty 2	16600 16051 16602
3	19273	Body grip handle kit - Handle grip inner, qty 2 - Handle grip outer, qty 2 - M4 button head bolts, qty 4 - M4 lock washers, qty 4	16600 16051 16602
4	19279	Handle grip kit - Handle, qty 1 - Bearing and spring, qty 1 - Shoulder screw, qty 1 - Wire-lock pin, qty 1 - 16mm key rings, qty 2 - Twisted link chain, qty 1	16600 16051 16602
5	19280	Coupler tube kit - Coupler tube, qty 1 - M20 x 130mm carriage bolt, qty 1 - M20 x 90mm carriage bolt, qty 1 - M20 flange nut, qty 1 - M20 jam nut, qty 1 - Flat washer, qty 1 - M14 hex bolts, qty 2 - M14 hex nuts, qty 2 - Lynch pins, qty 2 - Pin, qty 2	16051 16602
6	19281	Coupler tube hardware - M20 x 130mm carriage bolt, qty 1 - M20 x 90mm carriage bolt, qty 1 - M20 flange nut, qty 1 - M20 jam nut, qty 1 - Flat washer, qty 1	16051 16602
7	19282	Skid pads, qty 2	16051 16040



POWERRIDE™ 5TH WHEEL REPLACEMENT PARTS

Fig #	Part #	Description	Fits
1	16315	Head only	All
2	19269	Lube plates, qty 2	All
3	16908	Leg kit and hardware	All



Q-SERIES™ 5TH WHEEL REPLACEMENT PARTS

Q-Series™ hitches have been retired.

For the same great features and even more, please refer to our A-Series on page 209.

Fig #	Part #	Description	Fits
--	19223	Grease zerk, qty 3 (not pictured)	All
1	19215	Handle grip	All
2	19216	Handle with indicators	All
3	19224	Handle lock assembly: - 140mm chain, qty 1 - Lynch pin, qty 1 - Handle flip lock, qty 1 - M6 screw, qty 2 - M6 nylock nut, qty 1 - 16mm key ring, qty 2	All
4	19221	Head pinning kit: - Retainer cap pin, qty 2 - Pin grip, qty 2 - Pin clip, qty 2 - Grommet, thick, qty 4 - Grommet, thin, qty 2	All
5	19222	16125 service kit 9 & 10: - Anti-orbit pad, qty 1 - Molded anti-orbit pad, qty 2 - M10 carriage bolt, qty 2 - M10 nylock nut, qty 2 - M10 button head bolt, qty 2 - Square retaining washer, qty 2	All
6	16530*	Q20 head only	16130
7	16904*	Q20 leg kit and hardware	16130
8	19225*	Q20 leg spacer plates, qty 4	16130

* Continued while supplies last

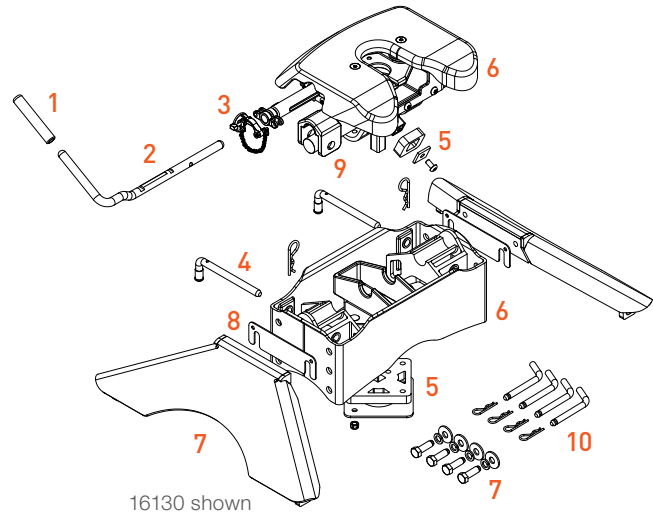


Fig #	Part #	Description	Fits
6	16545*	Q24 head only	16245
7	16913*	Q24 leg kit and hardware	16245
7	16963*	Q25 leg kit and hardware	16265
9	16914	Bearing shaft top clips, qty 2	All
10	16902	Rail pins & clips, qty 4	All

* Continued while supplies last

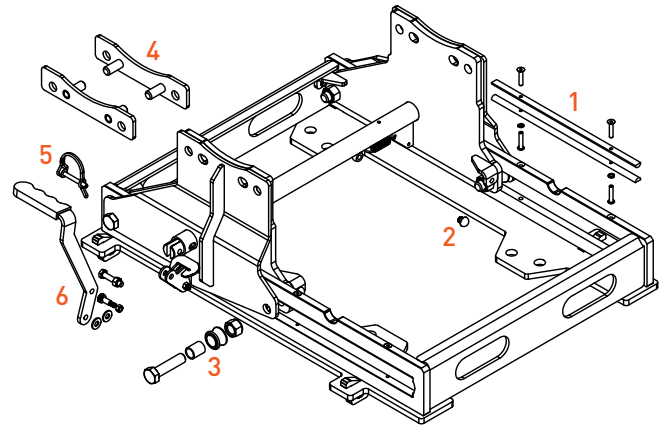
OEM PUCK SYSTEM REPLACEMENT PARTS

Part #	Description	Fits
19201	Handles, qty 4	16017, 16020, 16024, 16029
19205	Handles, qty 4	16021
19206	Handles, qty 4	16022
19207	Handles, qty 4	16023
19209	Handles, qty 4	16025
19202	Puck kit: - Locking T-bolts, qty 4 - Pucks, qty 4 - Castle nuts, qty 4 - Cotter pins, qty 4 - Washers, qty 4	16017, 16020, 16024, 16029
19203	Puck kit (rear of bed): - Locking T-bolts, qty 2 (lrg) - Pucks, qty 2 - Castle nuts, qty 2 - Cotter pins, qty 4	16021, 16022

Part #	Description	Fits
19204	Puck kit (front of bed): - Locking T-bolts, qty 2 (small) - Pucks, qty 2 - Castle nuts, qty 2 - Cotter pins, qty 4	16021, 16022
19208	Puck kit: - Locking T-bolts, qty 4 - Pucks, qty 4 - Castle nuts, qty 4 - Cotter pins, qty 4 - Washers, qty 4	16023
19210	Puck kit: - Locking T-bolts, qty 4 - Pucks, qty 4 - Castle nuts, qty 4 - Cotter pins, qty 4 - Washers, qty 4	16025

S-SERIES™ SLIDER REPLACEMENT PARTS

Fig #	Part #	Description	Fits
1	19102	Rail kit: - Half-round rails, qty 2 - M6 button head screws, qty 4 - M6 flat head screws, qty 4 - Lock washers, qty 4	All
2	19103	Rubber bumpers, qty 4	All
3	19104	Roller kit: - Roller sleeve, qty 1 - Roller, qty 1 - M16 Hex bolt, qty 1 - M16 nylock nut, qty 1	All
4	19105	Pin plate kit: - Pin plates, qty 2 - M14 hex bolt, qty 4 - M14 flat washers, qty 4 - M14 nylock nuts, qty 4	16574
5	19106	Wire-lock pin, qty 1	All
6	19107	Handle kit: - Locking handle, qty 1 - M6 shoulder bolt, qty 1 - M6 nylock nut, qty 1 - M8 hex bolt, qty 1 - M8 flat washers, qty 2 - M8 nylock nut, qty 1	All

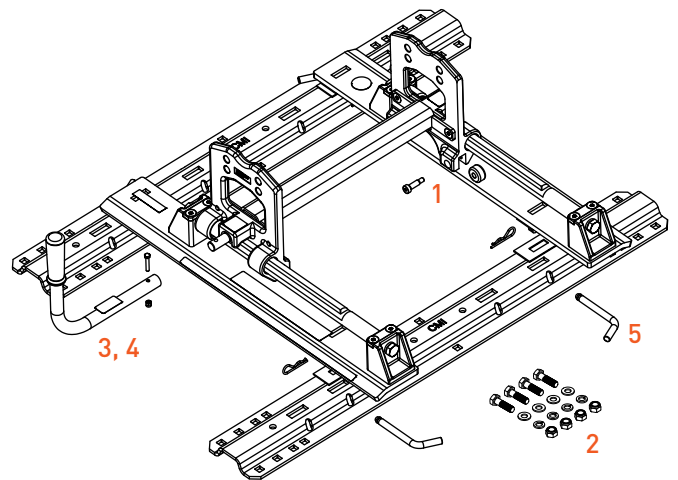


R-SERIES™ ROLLER REPLACEMENT PARTS

R-Series™ rollers have been retired.

For the same great features and even more, please refer to our S-Series on page 220.

Fig #	Part #	Description	Fits
1	19217	Roller wheel kit: - Roller wheel, qty 1 - M8 shoulder bolt, qty 1	All
2	19218	Head mounting hardware: - M14 hex bolt, qty 4 - M14 flat washer, qty 4 - M14 lock washer, qty 4 - M14 nylock nut, qty 4	All
3	19219	R16 handle assembly: - Handle, qty 1 - Handle grip, qty 1 - M6 hex bolt, qty 1 - M6 nylock nut, qty 1	16560
4	19220	R20 & R24 handle assembly: - Handle, qty 1 - Handle grip, qty 1 - M6 hex bolt, qty 1 - M6 nylock nut, qty 1	16550, 16570
5	16902	Rail pins & clips, qty 4	All





FLAT TOWING

FEATURED PRODUCTS

Scan QR code for current applications or visit curtmfg.com



NEW

Seeker™ tow bar

With its advanced design and innovative, hands-free locking sleeve, the CURT Seeker™ tow bar eliminates the struggle of hookups.



Rambler™ tow bar

This sleek, powerful tow bar is engineered for smooth non-binding operation, easy portability and dependable towing.



NEW

Fuse bypass switches

CURT fuse bypass switches make flat towing your vehicle easier by eliminating the need to constantly remove and replace fuses.

PRODUCT INDEX



238

Seeker™
Tow Bar



239

Rambler™
Tow Bar



239

Tow Bar
Base Plates



243

Tow Bar
Accessories



244

Universal
Tow Bars



245

Flat Towing
Accessories



246

Dinghy Towing
Adapters



247

RV
Harnesses



TRUST THE TOWING EXPERTS.



2

INCH

SEEKER™ STEEL TOW BAR

NEW

- High-strength steel construction rated for 10,000 lbs. gross towed vehicle weight
- Innovative sleeve automatically locks for hands-free operation on uneven ground
- Three-lug shackle ends for less stress on the base plate tabs
- Active slide resistance provides enhanced control when extending the arms
- Rigorously tested for proven safety and performance
- Full articulating head and shackles to prevent binding on rough, uneven terrain

Three stowing positions to avoid obstructions

Auto-locking pin allows for quick and easy stowing

Innovative sleeve automatically locks for hands-free operation on uneven ground

Three-lug shackle ends for less stress on the base plate tabs

Extended arm length for extra hookup radius

Fully sealed design protects against debris



Part #	GTVW	Shank Size	Finish
70012 N	10,000 lbs.	2"	Textured black



2
INCH

RAMBLER™ STEEL TOW BAR

Scan to
learn more



- Full articulating head and shackles to prevent binding on rough, uneven terrain
- Rigorous physical testing for proven safety and performance
- Polymer isolator washers reduce friction for smooth, anti-rattle operation
- Premium textured black finish for lasting corrosion and wear resistance
- Compatible with CURT or Blue Ox® base plates (sold separately)



Non-binding latches



Patent-pending, non-binding latches for easy release on uneven ground

Three stowing positions



Three stowing positions to avoid obstructions and maximize versatility

Lightweight



With a total weight of only 40 pounds, the Rambler is easy to lift, carry and install

Part #	GTVW	Shank Size	Finish
70001	7,500 lbs.	2"	Textured black



CUSTOM-FIT TOW BAR BASE PLATES

For base plate application
guide see page 240

- Distributes weight equally for reduced stress on the vehicle frame
- Made with a vehicle-specific design for a custom fit
- Precisely welded for superior strength and longevity
- Physically tested to gross vehicle weight rating (GVWR)
- Co-cured in a rust-resistant liquid A-coat with a gloss black powder coat finish (zinc-plated attachment tabs)



Simplified design



Our simplified base plate designs provide improved fitment on each vehicle

High-quality components



Large 1/4" thick spacers and upgraded hardware for better performance

Streamlined installation



Our comprehensive instruction manuals walk through the installation step-by-step



TOW BAR BASE PLATES

Installation may be too difficult for some users. Visit curtmfg.com/storelocator to find an installer. Always consult your vehicle owner's manual for proper flat towing procedures and limitations. Never exceed the recommended gross vehicle weight rating (GVWR).

RV HARNESSES

Add-On
#58919 - non-powered converter add-on compatible
#58920 - powered converter add-on compatible

Make / Model	Style / Notes	Years	Part #	Foot Notes	PC	Tab Ht.	Tab Width	Ins Time (hrs)	Years	Part #	Foot Notes	PC	Ins Diff.	Add-On #
Buick														
Enclave	--	08-17	70124*	A, C, D, E, I	103	17.75"	18"	3.0	13-17	58908	--	E35	Mod.	--
									08-12	58932	--	E26	Mod.	--
Envision	--	16-20	70117	A, C, D, E, G, I	103	17.25"	24"	3.0	16-20	58968	--	E26	Easy	--
Cadillac														
Escalade	--	15-20	70111	A, C, D, E	98	17.5"	32.5"	3.0	15-20	58965	--	E29	Easy	--
SRX	--	10-16	70123	A, C, I	103	16.5"	18"	3.0	--	--	--	--	--	--
Chevrolet														
Blazer	--	19-25	70138	A, C, D, E, I	103	13.5"	20"	4.0	--	--	--	--	--	--
Colorado	--	15-22	70144	C, G	98	13.5 -17"	30.5"	3.5	15-22	58910	--	E21	Easy	--
		15-20	70107*	C, E, G, I	103	23"	28"	3.5						
Equinox	Excluding lower shutters	18-24	70108	A, C, E, I	98	16"	23"	4.0	22-24	52105	w/ LED taillights	E26	Mod.	--
										58988	w/o LED taillights	E25	Mod.	--
	--	10-17	70109	A, C, D, E, G, I	103	15.5"	24"	3.0	18-21	58974	w/ LED taillights	E19	Mod.	--
										58971	w/o LED taillights	E30	Mod.	--
Silverado 1500	Excluding 2.7L	19-24	70141	A, C, F	99	21"	31.25"	3.0	19-24	58984	--	E25	Easy	--
	--	19-21	70146	A, C, F	89	19.5"	18"	3.0	16-18	58967	w/o LED taillights	E21	Easy	--
		16-18	70120	A, C, D, E, F	103	18"	32.5"	3.0						
Silverado 1500 LD	--	19-19	70120	A, C, D, E, F	103	18"	32.5"	3.0	19-19	58967	w/o LED taillights	E21	Easy	--
Silverado 1500 LTD	Excluding 2.7L	22-22	70141	A, C, F	99	21"	31.25"	3.0	22-22	58984	--	E25	Easy	--
	--	22-22	70146	A, C, F	89	19.5"	18"	3.0						
Silverado 2500 HD	--	15-19	70131*	C, F	103	18"	32.5"	1	16-19	58967	w/o LED taillights	E21	Easy	--
Silverado 3500 HD	--	15-19	70131*	C, F	103	18"	32.5"	1	16-19	58967	w/o LED taillights	E21	Easy	--
Sonic	--	12-20	70116	A, C, D, E, I	103	13.5"	18"	2.0	12-16	58936	--	E19	Easy	--
Suburban	Excl. Z71 or diesel	21-24	70145	C, E, G	89	19.5"	19"	4.0	21-24	58985	--	E25	Mod.	--
	Z71	21-24	70146	A, C, F	89	19.5"	18"	3.0						
	Excluding Z71 or adaptive cruise	15-20	70111	A, C, D, E	98	17.5"	32.5"	3.0						
	Z71, excluding adaptive cruise	15-20	70120	A, C, D, E, F	103	18"	32.5"	3.0						
Tahoe	Excl. Z71 or diesel	21-24	70145	C, E, G	89	19.5"	19"	4.0	21-24	58985	--	E25	Mod.	--
	Z71	21-24	70146	A, C, F	89	19.5"	18"	3.0						
	Excluding Z71 or adaptive cruise	15-20	70111	A, C, D, E	98	17.5"	32.5"	3.0						
	Z71, excluding adaptive cruise	15-20	70120	A, C, D, E, F	103	18"	32.5"	3.0						
Traverse	Excluding adaptive cruise	19-21	70136*	A, C, D, E	103	16"	37.5"	3.0	--	--	--	--	--	--
Dodge														
Durango	--	11-13	70101	A, C, D, F, G	98	17.5"	34.75"	3.0	11-13	58959	--	E23	Easy	58920
Ram 2500	--	03-10	70142*	B, D, E	99	25.5"	24"	2.0	--	--	--	--	--	--
Ram 3500	--	03-10	70142*	B, D, E	99	25.5"	24"	2.0	--	--	--	--	--	--

TOW BAR BASE PLATE APPLICATION GUIDE FOOTNOTE KEY

A Frame drilling required C Baseplate concealed E Concealed trimming required G Permanent part removal I Vehicle component mods or relocation
 B Baseplate exposed D Visible trimming required F Tow hook removal required H Rivet removal and replacement required J Mounts to factory tow loop

For the most up-to-date application information, please visit curtmfg.com

* Continued while supplies last



TOW BAR BASE PLATES

Installation may be too difficult for some users. Visit curtmfg.com/storelocator to find an installer. Always consult your vehicle owner's manual for proper flat towing procedures and limitations. Never exceed the recommended gross vehicle weight rating (GVWR).

RV HARNESES

Add-On
#58919 - non-powered converter add-on compatible
#58920 - powered converter add-on compatible

Make / Model	Style / Notes	Years	Part #	Foot Notes	PC	Tab Ht.	Tab Width	Ins Time (hrs)	Years	Part #	Foot Notes	PC	Ins Diff.	Add-On #
Ford														
Bronco	Modular or standard D-ring bumper only	21-24	70143	A, C, I	89	28"	31"	3	21-24	58992	w/ LED taillights	E28	Mod.	--
	Standard bumper	21-24	70147	C, E, F	99	19.5"	30.5"	3		58996	w/o LED taillights	E24	Mod.	
	Heavy duty modular bumper	21-21	70140	C, J	39	26"	22"	0.5						
Edge	Excl. 2.0L EcoBoost	15-18	70125*	A, C, D, E, I	103	17.25"	24"	5.0	--	--	--	--	--	--
Expedition	--	18-22	70139	A, C, E, F	103	16"	34.5"	3.0	07-17	58988	--	E25	Easy	--
		15-17	70130	A, C, F, G	103	17.5"	35"	3.0						
			70106*	A, C, F, G	103	17.5"	35"	3.0						
Explorer	--	16-19	70114	A, C, D, E	103	16.5"	22"	3.0	16-19	58976	--	E19	Mod.	--
F-150	Excl. Lightning	09-23	70130	A, C, F, G	103	19"	33.5"	3.0	21-23	52103	w/ LED taillights	E25	Easy	--
	--	09-20	70106*	A, C, F, G	103	17.5"	35"	3.0	21-23	58989	w/ backup sensors, excl. LED taillights	E24	Easy	--
									15-18	58970	--	E22	Easy	--
									09-14	58912	--	E30	Easy	--
F-250 / F-350 Super Duty	--	20-24	70133	C, D	103	17.25"	24"	2.0	23-24	52106	w/o taillights	E27	Easy	--
		17-19	70137	A, C, E, F	103	24.5"	34.5"	3.0	21-22	52102	w/ backup sensors	E23	Easy	--
									20-22	58987	Excl. rear sensors and LED taillights	E24	Easy	--
									17-19	58987	--	E24	Easy	--
Fiesta	--	14-19	70119*	A, C, D, E, I	103	22"	24"	3.0	14-19	58977*	Sedan	E19	Mod.	58919*
										58972	Hatchback	E24	Mod.	58919*
Flex	--	13-19	70135*	A, C, E	103	15"	20"	3.0	--	--	--	--	--	--
Focus	Excluding RS	16-18	70113*	A, C, D, E	103	13.5"	21.5"	3.0	12-18	58944	Sedan	E25	Easy	--
Ranger	--	19-23	70127	C, F, G	98	17"	31"	1.0	19-22	58986	w/ blind spot detect	E25	Easy	--
GMC														
Acadia	--	17-19	70118	A, C, D, E	103	16"	20"	3.0	17-19	58973*	--	E25	Easy	--
		13-16	70124*	A, C, D, E, I	103	17.75"	18"	3.0	13-16	58908	--	E35	Mod.	--
Acadia Limited	--	17-17	70124*	A, C, D, E, I	103	17.75"	18"	3.0	17-17	58908	--	E35	Mod.	--
Canyon	--	15-22	70144	C, G	98	13.5-17"	30.5"	3.5	15-22	58910	--	E21	Easy	--
		15-20	70107*	C, E, G, I	103	23"	28"	3.5						
Sierra 1500	Excluding 2.7L	19-24	70141	A, C, F	99	21"	31.25"	3.0	19-24	58984	--	E25	Easy	--
	--	16-18	70120	A, C, D, E, F	103	18"	32.5"	3.0	16-18	58967	w/o LED taillights	E21	Easy	--
Sierra 1500 Limited	Excluding 2.7L	22-22	70141	A, C, F	99	21"	31.25"	3.0	22-22	58984	--	E25	Easy	--
	--	19-19	70120	A, C, D, E, F	103	18"	32.5"	3.0	19-19	58967	w/o LED taillights	E21	Easy	--
Sierra 2500 HD / 3500 HD	--	15-19	70131*	C, E, F	103	18"	32.5"	1	16-19	58967	w/o LED taillights	E21	Easy	--

TOW BAR BASE PLATE APPLICATION GUIDE FOOTNOTE KEY

A Frame drilling required **C** Baseplate concealed **E** Concealed trimming required **G** Permanent part removal **I** Vehicle component mods or relocation
B Baseplate exposed **D** Visible trimming required **F** Tow hook removal required **H** Rivet removal and replacement required **J** Mounts to factory tow loop

* Continued while supplies last



TOW BAR BASE PLATES

Installation may be too difficult for some users. Visit curtmfg.com/storelocator to find an installer. Always consult your vehicle owner's manual for proper flat towing procedures and limitations. Never exceed the recommended gross vehicle weight rating (GVWR).

RV HARNESSES

Add-On
#58919 - non-powered converter add-on compatible
#58920 - powered converter add-on compatible

Make / Model	Style / Notes	Years	Part #	Foot Notes	PC	Tab Ht.	Tab Width	Ins Time (hrs)	Years	Part #	Foot Notes	PC	Ins Diff.	Add-On #
GMC (continued)														
Terrain	--	10-17	70109	A, C, D, E, G, I	103	15.5"	24"	3.0	10-17	58900	--	E21	Easy	--
Yukon	Excluding AT4 or diesel	21-24	70145	C, E, G	89	19.5"	19"	4.0	21-24	58985	--	E25	Mod.	--
	AT4	21-24	70146	A, C, F	89	19.5"	18"	3.0	15-20	58965	--	E29	Easy	--
	Excluding Z71 or adaptive cruise	15-20	70111	A, C, D, E	98	17.5"	32.5"	3.0						
Yukon XL	Excl. AT4 or diesel	21-24	70145	C, E, G	89	19.5"	19"	4.0	21-24	58985	--	E25	Mod.	--
	AT4	21-24	70146	A, C, F	89	19.5"	18"	3.0	15-20	58965	--	E29	Easy	--
	Excluding Z71 or adaptive cruise	15-20	70111	A, C, D, E	98	17.5"	32.5"	3.0						
Honda														
CR-V	--	12-14	70104	C, D, E, G, I	103	15.5"	24"	2.0	12-16	58904	--	E21	Mod.	--
		07-11	70115	A, C, E, I	103	16"	19"	3.0	07-11	58901	--	E21	Mod.	--
Jeep														
Cherokee	Aluminum bumper w/o tow hooks	19-23	70132	C, D, G, H	103	19.5"	37"	3.0	19-23	58963	--	E23	Easy	--
	Steel bumper with tow hooks	19-23	70103	C, F, G, H	103	21"	37.5"	2.0						
	Trailhawk	14-18	70134	C, E, F, H	103	20"	37.25"	3.0	14-18	58909	--	E27	Mod.	58920
Gladiator	--	20-23	70129	A, B, E	103	17.25"	24"	3.0	20-24	58964	--	E29	Mod.	--
Grand Cherokee	--	11-21	70101	A, C, D, F, G	98	17.5"	34.75"	3.0	14-21	58907	--	E21	Mod.	--
									07-13	58940*	--	E31	Easy	--
Grand Cherokee WK	--	22-22	70101	A, C, D, F, G	98	17.5"	34.75"	3.0	22-22	58907	--	E21	Mod.	--
Wrangler	JL	18-24	70105	A, B, E	103	18"	24"	2.0	18-24	58964	JL	E29	Easy	--
	JK, excl. Rubicon, Hard Rock, 75th Anny & ARB bump.	07-18	70102	A, B, E	98	14.5"	24"	2.0	07-18	58903	JK, excl. right hand drive	E27	Easy	58919*
	JK, excl. std bump.	07-18	70110	A, B, E	103	17"	24"	2.0						
	TJ	97-06	70112	A, B	103	17.75"	24"	2.0	97-06	58902	--	E26	Easy	58919*
Lincoln														
Navigator	--	18-24	70139	A, C, E, F	103	16"	34.5"	3.0	--	--	--	--	--	--
		15-17	70130	A, C, F, G	103	17.5"	35"	3.0						
			70106*	A, C, F, G	103	17.5"	35"	3.0						
MKS	--	13-15	70135*	A, C, E	103	15"	20"	3.0	--	--	--	--	--	--
MKT	--	13-19	70135*	A, C, E	103	15"	20"	3.0	10-19	58960	--	E26	Mod.	--
MKX	--	16-18	70125*	A, C, D, E, I	103	17.25"	24"	5.0	--	--	--	--	--	--
Ram														
1500	--	16-18	70121	A, C, E	103	17.5"	35"	1.0	13-18	58916	Excl. LED taillights	E26	Mod.	--
										58906	w/ LED taillights	E25	Mod.	--
1500 Classic	--	19-24	70121	A, C, E	103	17.5"	35"	1.0	19-24	58916	Excl. LED taillights	E26	Mod.	--
										58906	w/ LED taillights	E25	Mod.	--
2500	--	11-18	70142*	B, D, E	99	25.5"	24"	2.0	13-18	58994	--	E24	Mod.	--
3500	--	11-18	70142*	B, D, E	99	25.5"	24"	2.0	13-18	58994	--	E24	Mod.	--

TOW BAR BASE PLATE APPLICATION GUIDE FOOTNOTE KEY

A Frame drilling required **C** Baseplate concealed **E** Concealed trimming required
B Baseplate exposed **D** Visible trimming required **F** Tow hook removal required

For the most up-to-date application information, please visit curtmfg.com

G Permanent part removal **I** Vehicle component mods or relocation
H Rivet removal and replacement required **J** Mounts to factory tow loop

* Continued while supplies last

STEEL TOW BAR LOCK SET

- Secures tow bar, vehicle and RV attachment points
- Easy-to-operate, 1/4-turn lock activation
- Watertight dust cap prevents internal corrosion
- Includes six keys for added convenience



Lock set includes matching keys for convenience



Helps deter theft and tampering when left unattended



70005

Part #	Fits Tube Size	Hitch Pin Diameter	Tow Bar Arm Lock Pin Diameter	Finish	Includes
70005	Up to 2-1/2"	5/8"	1/2"	Chrome-plated	Two tow bar arm locks and one hitch lock



2
INCH

HIGH-LOW HITCH RECEIVER ADAPTERS

- Fits industry-standard 2" hitch receiver tubes and accepts 2" shanks
- Ideal for leveling a tow bar with vehicle base plates



45797



45798



45808

Part #	Shank Size	Accepts	GTVW	Drop	Rise	Length	Finish
45797	2"	2" shank	7,500 lbs.	2"	2"	8"	Gloss black
45798	2"	2" shank	7,500 lbs.	4"	4"	8"	Gloss black
45808	2"	2" shank	7,500 lbs.	6"	6"	8"	Gloss black

RAMBLER™ TOW BAR COVER

- Acts as a storage bag when not in use
- Durable construction featuring UV-resistant vinyl and zipper
- Weather-resistant, form-fitted cover designed for use with CURT Rambler tow bar
- Shank fits within the cover when tow bar is folded



70010

Part #	Fits
70010	CURT Rambler tow bar (70001)

TOWING ACCESSORIES STORAGE BAG

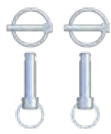
- Great for chains, straps, greasy gooseneck ball and safety chain attachments
- Durable fabric with high-strength webbing straps
- Zipper closure to keep items secure
- Comfort-grip handles for easy portability



70004

Part #	Inside Length	Inside Width	Inside Depth
70004	15"	8"	8"

TOW BAR & BASE PLATE REPLACEMENT PARTS



19261



19262



70002



70006



70008

Part #	Description	Break Strength	Length	Cable Diameter	Hook Opening
19261	Tow bar pins and lynch pins, qty 2	--	--	--	--
19262	Tow bar rubber bellow, qty 2	--	--	--	--
70002	Tow bar attachment tab, qty 1	--	7-3/4"	--	--
70003	Tow bar attachment tab, qty 1	--	9-1/4"	--	--
70006	Tow bar base plate safety cable, qty 1	3,500 lbs.	36"	1/4"	--
70007	Tow bar base plate safety cable, qty 1	7,500 lbs.	36"	3/8"	--
70008	Tow bar safety cable, qty 1	7,500 lbs.	84"	3/8"	17/32"



Attachment tabs seamlessly blend a factory appearance when not in use

UNIVERSAL TOW BARS

- Ideal for dingy towing a small vehicle behind an RV
- Lightweight design for easy handling
- Universal brackets bolt to the frame of the vehicle (trimming may be required)
- Includes universal frame brackets and mounting hardware
- Compact, retail-friendly packaging (#19750)
- Cannot be used with CURT base plates



19750



Adjustable arm width allows for fitment on a variety of vehicles



19745

Part #	Capacity	Arm Structure	Adjustment Range	Ball Diameter	Finish
19750	5,000 lbs.	Two pieces, bolt together	26" to 40" in width	2"	Gloss black
19745*	5,000 lbs.	One-piece	26" to 41" in width	2"	Gloss black

* Continued while supplies last

Replacement Parts

Part #	Description	Fits
19746	Replacement safety pin (new style)	19745
21500	Replacement pin & clip (old style)	19745
19748	Bumper brackets	19745



19746



21500



19748

EXTENDED VIEW TOW MIRROR

- Compatible with pickup or SUV left or right side mirror
- Fully adjustable design can be used in horizontal or vertical position
- Hinging arm and elastic straps provide easy and secure installation



Attaches to side mirror to expand view with a trailer



Articulating head allows precise angling



20002

Part #	Adds	Fits
20002	5" to 7-1/2" to existing mirror	Mirrors 4" to 11" high

TOWING LIGHTS

- Easily adds tow lights to a dinghy-towed vehicle or trailer without lights
- Non-scratch magnetic base protects vehicle finish
- Perfect for boats, RVs and flat towing applications
- 20' cord with 4-way flat plug allows for plug-and-play convenience
- Snap locks included for simple, secure splice-in connection
- Patent# D355,270



53204

53200

Bulk #	Pkg #	Length	Plug	Description
	53204*	20'	4-way flat	Auxiliary towing lights

* Includes a sturdy, reusable case

FUSE BYPASS SWITCHES

- Helps avoid having to remove and replace fuses when flat towing your vehicle
- Vehicle-specific application for a custom fit
- Integrates with CURT RV harness (sold separately)

Part #	Description	Max Amps
58435 N	Mini fuse bypass switch, short	20
58445 N	Mini fuse bypass switch, long	20
58455 N	Mini two-fuse bypass switch	20
58475 N	ATC two-fuse bypass switch	20

NEW



58435

58455

DINGHY TOWING ADAPTER HARNESES

- Plugs into CURT RV harness 4-flat to provide a standard connector concealed under the dinghy vehicle's hood
- Allows for flexible mounting on the front of the dinghy vehicle versus welded connector bracket
- 6' length is ideal for equipping dinghy vehicle for flat towing behind RV
- Some manual wiring required



Part #	From Dinghy Vehicle	To RV	Length	Material
58980	4-way flat	7-way RV blade	6 feet	Plastic
58981	4-way flat	6-way round	6 feet	Plastic

DINGHY TOWING ADAPTERS

- Ideal for connecting motorhomes to dinghy vehicle for flat towing
- UV-resistant coiled cable extends without scraping the ground
- Simple plug-and-play design eliminates the need for cutting or splicing
- Constructed from die-cast or durable plastic
- Informative, full-color, retail packaging



Part #	From Dinghy Vehicle	To RV	Extends	Included Socket	Socket Housing
57271	4-way flat	7-way RV blade	5 feet	--	Plastic
57280	4-way flat	7-way RV blade	8 feet	--	Plastic
57281	5-way flat	7-way RV blade	5 feet	--	Plastic
57282	5-way flat	7-way RV blade	8 feet	--	Plastic
57283	6-way round	7-way RV blade	8 feet	One 6-way round	Plastic and die cast
57284	7-way RV blade	7-way RV blade	8 feet	One USCAR 7-way RV blade	Plastic
57285	4-way round	7-way RV blade	8 feet	One 4-way round	Plastic and die cast
57286	6-way round	6-way round	8 feet	Two 6-way round	Die cast

TOW BAR RV HARNESSES

For RV harness application
guide see page 240

- Integrated block diodes isolate sensitive vehicle electronics from RV signals
- Uses towed vehicle's existing taillights, brake lights and turn signals
- Optional harness add-on equips vehicle with standard 4-way flat for towing a trailer (not available for all RV harnesses; see table)



58948



Connects a towed vehicle to an RV using a standard 4-way flat trailer plug



Simple plug-and-play design eliminates the need for cutting or splicing



Includes harness, 4-flat extension, mounting bracket and hardware

SPLICE-IN RV HARNESS

- Connects a towed vehicle to an RV using a standard 4-way flat trailer plug
- Splices into vehicle's electrical system with included butt connectors
- Validated color-coded wires with wiring guide for easier installation
- Integrated block diodes isolate sensitive vehicle electronics from RV signals
- Uses towed vehicle's existing taillights, brake lights and turn signals
- Not compatible with PWM electrical systems



58979

Part #	Description
58979	Splice-in RV harness

RV HARNESS DIODE KIT

- Allows RV to power lights only on the towed vehicle without power feeding back
- Requires trailer-side 4-way flat plug with 20' wires or similar

Part #	Amps / Block	Volts / Block	Includes
58999	3 amps	24 volts max	Four diode blocks / 12 spade terminals



58999

TOW BAR RV HARNESS APPLICATION GUIDE

Make / Model	Style	Years	Part #	Add-On #
Acura				
MDX	--	16 - 18	58955*	--
Buick				
Enclave	--	13 - 17	58908	58920
		08 - 12	58932*	58920
Envision	--	16 - 20	58968	--
Rainier	--	04 - 07	58925*	--
Cadillac				
Escalade	--	21 - 24	58993	--
		15 - 20	58965	--
		07 - 14	58927	--
Escalade ESV	--	21 - 24	58993	--
SRX	--	10 - 16	58978	--
Chevrolet				
Avalanche	--	07 - 13	58924*	58920
Captiva Sport	--	12 - 12	58933*	58920
Cobalt	Sedan, excl. SS	05 - 10	58931*	58920
Colorado	--	23 - 24	52108	--
		15 - 22	58910	--
		04 - 12	58926	58919*
Cruze	--	11 - 15	58935*	--
Cruze Limited	--	16 - 16	58935*	--
Equinox	Without LED taillights	22 - 24	58988	--
	With LED taillights	22 - 23	52105	--
	Without LED taillights	18 - 21	58971	--
	With LED taillights	18 - 21	58974	--
	--	10 - 17	58900	58920
Malibu	Excluding LTZ	13 - 15	58934*	--
		08 - 12	58932*	58920
Malibu Limited	Excluding LTZ	16 - 16	58934*	--
Silverado 1500	--	19 - 24	58984	--
	Without LED taillights	16 - 18	58967	--
Silverado 1500 LD	Without LED taillights	19 - 19	58967	--
Silverado 1500 LTD	--	22 - 22	58984	--
Silverado 2500 / 3500 HD	Excluding LED taillights w/ signature animation lighting	24 - 24	52107	--
	--	20 - 23	58984	--
	Without LED taillights	16 - 19	58967	--
Sonic	--	12 - 16	58936	--

Make / Model	Style	Years	Part #	Add-On #
Chevrolet (continued)				
Suburban	--	21 - 24	58985	--
		15 - 20	58966	--
Suburban 1500	--	07 - 14	58927	--
Tahoe	--	21 - 24	58985	--
		15 - 20	58966	--
		07 - 14	58927	--
Trailblazer	--	02 - 08	58925*	--
Traverse	--	13 - 17	58922*	58920
		09 - 12	58932*	58920
Dodge				
Caliber	--	08 - 12	58959*	--
Durango	--	14 - 24	58957	--
		11 - 13	58959*	--
Nitro	--	07 - 12	58937	58919*
Ram 1500	--	09 - 10	58916	--
Fiat				
500	--	12 - 19	58911	--
Ford				
Bronco	With LED taillights	21 - 24	58992	--
	Without LED taillights	21 - 24	58996	--
Edge	--	07 - 10	58952	58920
Escape	--	17 - 21	58954	--
		13 - 16	58943*	58920
		05 - 12	58952	58920
Expedition	--	07 - 17	58988	--
Explorer	--	16 - 19	58976	--
F-150	With backup sensors, excl. LED taillights	21 - 23	58989	--
	With LED taillights and backup sensors	21 - 23	52103	--
	With LED taillights, backup sensors, and onboard scale	21 - 23	52104	--
	Without LED taillights	15 - 18	58970	--
	--	09 - 14	58912	--
F-250 / F-350 Super Duty	Without LED taillights	23 - 24	52106	--
	With backup sensors	21 - 22	52102	--
	Excluding rear sensors and LED taillights	20 - 22	58987	--
	--	17 - 19	58987	--
Fiesta	Hatchback	14 - 19	58972*	--
		11 - 13	58946*	--
	Sedan	14 - 19	58977*	--

58919 - non-powered converter add-on compatible

58920 - powered converter add-on compatible

* Continued while supplies last

Make / Model	Style	Years	Part #	Add-On #
Ford (continued)				
Flex	--	09 - 19	58941*	58920
Focus	Hatchback	12 - 14	58905*	--
	Sedan	12 - 18	58944*	58920
Freestar	--	04 - 07	58952	58920
Fusion	--	13 - 20	58945*	58920
		06 - 12	58942*	58920
Ranger	w/ blind spot detection	19 - 24	58986	--
GMC				
Acadia	--	17 - 19	58973*	--
		13 - 16	58908	58920
Acadia Limited	--	17 - 17	58908	58920
Canyon	--	23 - 24	52108	--
		15 - 22	58910	--
		04 - 12	58926	58919*
Envoy	--	02 - 09	58925*	--
Sierra 1500	--	19 - 24	58984	--
	Without LED taillights	16 - 18	58967	--
Sierra 1500 Limited	--	22 - 22	58984	--
	Without LED taillights	19 - 19	58967	--
Sierra 2500 / 3500 HD	Excluding LED taillights w/ signature animation lighting	24 - 24	52107	--
	--	20 - 23	58984	--
	Without LED taillights	16 - 19	58967	--
Terrain	--	10 - 17	58900	58920
Yukon	--	21 - 24	58985	--
		15 - 20	58965	--
		07 - 14	58927	--
Yukon XL	--	21 - 24	58985	--
		15 - 20	58965	--
Yukon XL 1500	--	07 - 14	58927	--
Honda				
CR-V	--	12 - 16	58904	--
		07 - 11	58901	--
		02 - 06	58949	--
Element	--	07 - 11	58947*	--
Fit	--	07 - 13	58948*	58919*
Isuzu				
i-280	--	06 - 06	58926	58919*
i-290	--	07 - 08	58926	58919*
i-350	--	06 - 06	58926	58919*
i-370	--	07 - 08	58926	58919*
Jeep				
Cherokee	--	19 - 23	58963	--
		14 - 18	58909	58920
Compass	--	22 - 24	58997	--
		17 - 21	58958*	--
		11 - 16	58938*	58920
Gladiator	--	20 - 24	58964	--

Make / Model	Style	Years	Part #	Add-On #
Jeep (continued)				
Grand Cherokee	--	22 - 24	58998	--
		14 - 21	58907	--
		07 - 13	58940*	58920
		05 - 06	58939*	58919*
		99 - 04	58915	58919*
Grand Cherokee L	--	21 - 24	58998	--
Grand Cherokee WK	--	22 - 22	58907	--
Liberty	--	08 - 12	58937	58919*
		02 - 07	58917	58919*
Patriot	--	08 - 17	58959*	--
Wrangler	JL	18 - 24	58964	--
	JK, excl. right hand drive	07 - 18	58903	58920
	TJ	98 - 06	58902	58920
Lincoln				
Aviator	--	20 - 25	58983*	--
MKT	--	10 - 19	58960*	--
MKX	--	07 - 10	58952	58920
Mazda				
Tribute	--	08 - 11	58952	58920
Mercury				
Mariner	--	05 - 11	58952	58920
Oldsmobile				
Bravada	--	02 - 04	58925*	--
Pontiac				
G5	Sedan	07 - 10	58931*	58920
Pursuit	Sedan	05 - 06	58931*	58920
Ram				
1500	--	19 - 24	58975	--
	With LED Taillights	13 - 18	58906	--
	Without LED taillights	13 - 18	58916	--
	--	11 - 12	58916	--
1500 Classic	With LED Taillights	19 - 24	58906	--
	Without LED taillights	19 - 24	58916	--
2500 / 3500	With LED Taillights	19 - 24	58995	--
	--	13 - 18	58994	--
Saturn				
Vue	--	08 - 10	58933*	58920
		02 - 07	58928*	58919*
Subaru				
XV Crosstrek	--	13 - 15	58962*	--
Suzuki				
Grand Vitara	--	06 - 12	58950*	58919*
SX4	--	07 - 11	58950*	58919*
Toyota				
RAV4	--	13 - 18	58956*	--

58919 - non-powered converter add-on compatible

58920 - powered converter add-on compatible

* Continued while supplies last



GOOSENECK HITCHES

FEATURED PRODUCTS

Scan QR code for current applications or visit curtmfg.com



RockerBall™ gooseneck ball

RockerBall™ features ShockDrop™ technology to improve ride quality by reducing chucking and jarring, providing comfort for passengers.



Universal OEM offset balls

Improve the clearance between your truck bed and trailer with our CURT universal OEM puck system with gooseneck ball and 4" offset.



OEM-style hitches

CURT OEM-style hitches are designed for a custom fit on the latest Chevrolet, Ford, GMC, and Ram 2500 and 3500 pickup trucks.

PRODUCT INDEX

A B C



252
Selecting a Gooseneck



254
OEM Puck System Kits



256
Universal OEM Puck System Offset Balls



258
OEM-Style Hitches



260
Double Lock EZr™ Hitches



262
Original Double Lock™ Hitches



263
RockerBall™ Gooseneck Ball



266
Over-Bed Hitches



266
Fixed Ball Hitches



268
X5™ 5th Wheel Adapter Plates



269
5th Wheel Rail Hitches



270
Gooseneck Electrical

SELECTING A GOOSENECK HITCH

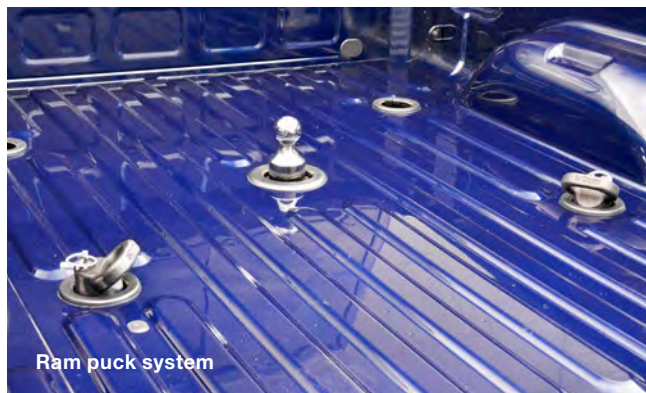
There are three basic methods for installing a gooseneck hitch:

A | OEM PUCK SYSTEM OPTIONS

Many pickups today are factory-equipped with a truck bed puck system. A puck system provides attachment points for both gooseneck and 5th wheel towing.

For trucks with a puck system, an OEM puck system gooseneck kit is the easiest way to tow a gooseneck trailer. The components can be installed or removed quickly, as necessary.

See page 254 to select one of these kits.



B | HITCH & BRACKET OPTIONS

The traditional method for installing a gooseneck hitch on trucks without factory-installed puck systems are vehicle-specific brackets. CURT OEM-style gooseneck hitches are a unique variant of the traditional method, featuring an all-in-one, custom-fit design that bolts to the truck frame like a factory hitch. No additional brackets required. See page 258 for our OEM-style hitches.

We also offer a variety of traditional gooseneck hitches that mount with vehicle-specific brackets. Options include our Double Lock EZr™, original Double Lock™ and more. Start on page 260 for our traditional gooseneck hitch line.

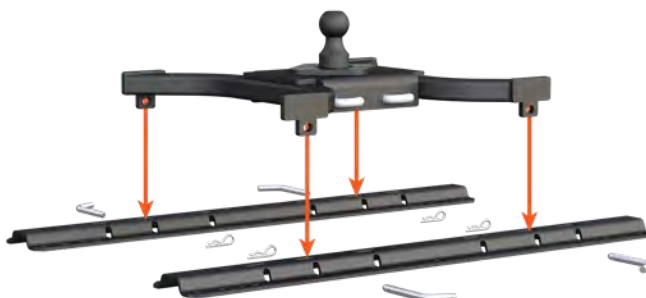


C | EXISTING 5TH WHEEL BASE RAIL OPTIONS

For trucks with 5th wheel rails already installed, CURT offers 5th wheel rail gooseneck hitches. These 5th-wheel-to-gooseneck adapters easily drop into any industry-standard base rails.

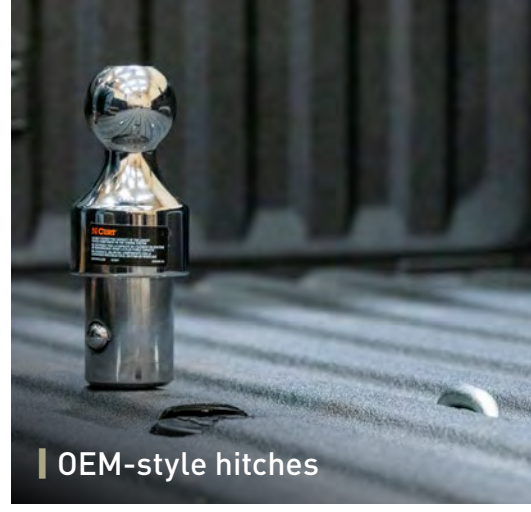
A 5th wheel rail hitch provides a ball ready for towing a gooseneck trailer, and the hitch can easily be removed from the rails whenever necessary to allow for 5th wheel towing or clearing the bed for cargo.

See page 268 for 5th wheel rail goosenecks.





| OEM puck system anchor kit



| OEM-style hitches



| Bent plate hitch



OEM PUCK SYSTEMS

30K
GTW

38K
GTW

OEM PUCK SYSTEM GOOSENECK KITS

Available for Chevrolet, Ford, GMC, Nissan and Ram, these kits utilize the truck bed puck system built into select pickups with the factory installed towing prep package (see table below). The ball and anchors easily drop into the pucks, lock into place and are immediately ready to couple to a gooseneck trailer.

Each kit includes:

- 2-5/16" gooseneck ball
- Two safety chain anchors with zinc-plated locking pins
- Rubber hole cover
- Durable storage case



Quarter-turn anchoring system



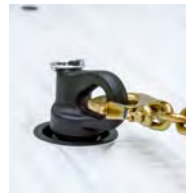
Step 1 - Lift and twist latch to release the retention balls



Step 2 - Drop the ball into OEM puck system hole



Step 3 - Return latch to lock the ball in place for towing



Large safety chain openings accept heavy-duty hooks



Installation of these products requires an OEM truck bed puck system (see above example, Ram puck system)

Product Details

Gooseneck ball

- Installs easily with quarter-turn latch locking system
- Kits include 2-5/16" (3" ball sold separately)
- Stainless steel bearing retention balls keep shank fully locked into the hitch
- Constructed from strong, machine-forged steel alloy
- Protected by a polished chrome-plated mirror finish
- Tested for safety to J2638 specifications (30K balls tested to U.S. VESC V-19)
- Patent #8,955,866

Safety chain anchors

- Provides a reliable connection for gooseneck trailer safety chains
- Simple, drop-in install eliminates the need for tools
- Wide openings accept large safety chain hooks
- Cast steel anchors with durable carbide black powder coat finish
- Patent #9,452,647

Make	Model	Style	Years
Kit Compatibility - See Adjacent Page for Part Numbers			
Chevrolet	Silverado 2500 HD / 3500 HD	With 5th wheel prep package	16 - 25
Ford	F-250 / F-350 Super Duty	With 5th wheel prep package	13 - 25
GMC	Sierra 2500 HD / 3500 HD	With 5th wheel prep package	16 - 25
Nissan	Titan XD	With 5th wheel prep package	16 - 24
Ram	2500 / 3500	With 5th wheel prep package	13 - 25



QUICK AND EASY DROP-IN INSTALLATION

OEM PUCK SYSTEM GOOSENECK KITS & COMPONENTS



60618
Ram



60638
Ram



60692 & 60639
Chevrolet, Ford, GMC, Nissan



60617 & 60698
Ram



60691
Chevrolet, Ford, GMC, Nissan



60601



60629
& 60627



60628
& 60634



66155

Make	GTW / Vertical Load	Ball Size	Rise	Kit #	Ball #	Anchors #	Cover #
30K Kits & Components							
Ram	30,000 / 7,500 lbs.	2-5/16"	1/2"	60618	60601	60617	66155
Chevrolet, Ford, GMC, Nissan	30,000 / 7,500 lbs.	2-5/16"	1-5/8"	60692	60629	60691	66155
Chevrolet, Ford, GMC, Nissan, Ram	30,000 / 7,500 lbs.	2-5/16"	1-5/8"	--	60629	--	--
Chevrolet, Ford, GMC, Nissan, Ram	30,000 / 7,500 lbs.	3"	1-5/8"	--	60628	--	--
38K Kits & Components							
Ram	38,000 / 9,500 lbs.	2-5/16"	1-5/8"	60638	60627	60698	66155
Chevrolet, Ford, GMC, Nissan	38,000 / 9,500 lbs.	2-5/16"	1-5/8"	60639	60627	60691	66155
Chevrolet, Ford, GMC, Nissan, Ram	38,000 / 9,500 lbs.	2-5/16"	1-5/8"	--	60627	--	--
Chevrolet, Ford, GMC, Nissan, Ram	38,000 / 9,500 lbs.	3"	1-5/8"	--	60634	--	--

Product Details

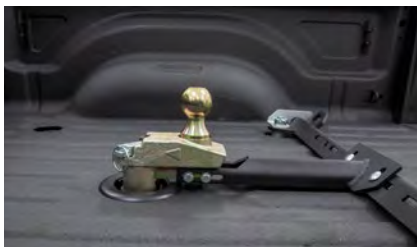
Fixed Ball and RockerBall™

- Provides extra 4" of rearward offset for improved turning and clearance
- Rated for up to 30,000 lbs. gross trailer weight and 7,500 lbs. vertical load
- Universal design fits Chevrolet, Ford, GMC, Nissan Titan XD and Ram puck systems (see application fitment in the table below)
- Adjustable anchors eliminate chucking between frame and pucks
- Anti-rotation arms provide stability and promote a smooth, steady tow
- Integrated safety chains holders
- Includes standard 2-5/16" diameter gooseneck ball with 4" rearward offset
- Provides 6-1/2" of rise over the factory OEM puck system
- Forged and machined steel gooseneck ball with yellow-zinc finish
- Frame protected by a highly durable carbide black powder coat finish
- Tested for safety in accordance with SAE J2638
- Patent pending

RockerBall™ specific

- ShockDrop™ technology promotes smooth towing by reducing jerking and jarring
- Cushioned isolator improves ride comfort for animals and passengers
- Offset pin dampens vertical chucking and fore-aft motion during starts and stops
- Virtually maintenance-free with no airbag or bearings to service
- Provides 8" of rise over the factory OEM puck system

Enhanced clearance



Provides an additional 4" of rearward offset and 6-1/2" of rise (8" for RockerBall)

Simple installation



Patented quarter-turn mechanism allows for quick, easy installation

ShockDrop™ (#60668 only)



ShockDrop technology reduces jerking and jarring and promotes a smooth tow

Make	Model	Style	Years
Compatibility - See Adjacent Page for Part Numbers			
Chevrolet	Silverado 2500 HD / 3500 HD	With 5th wheel prep package	20 - 25
Ford	F-250 / F-350 Super Duty	With 5th wheel prep package	13 - 25
GMC	Sierra 2500 HD / 3500 HD	With 5th wheel prep package	20 - 25
Nissan	Titan XD	With 5th wheel prep package	16 - 24
Ram	2500 / 3500	With 5th wheel prep package	13 - 25



PROVIDES AN EXTRA 4" OF REARWARD OFFSET

30k
GTW

**UNIVERSAL OEM PUCK SYSTEM
OFFSET GOOSENECK BALLS**



Part #	Ball Style	GTW / Vertical Load	Ball Size	Rise	Offset
60663	Fixed	30,000 / 7,500 lbs.	2-5/16"	6-1/2"	4"
60668	RockerBall	30,000 / 7,500 lbs.	2-5/16"	8"	4"
60669	N Compatible with #60663 and #60668				



NO ADDITIONAL HARDWARE OR BRACKETS REQUIRED

HITCHES & BRACKETS



OEM-STYLE GOOSENECK HITCHES

OEM-style gooseneck hitches are designed for a unique, vehicle specific fit for trucks not equipped with factory-installed puck systems. They quickly and securely bolt onto the truck's frame like a factory trailer hitch, with no drilling or additional parts required.

Streamlined installation



Requires no additional hardware or installation brackets



No drilling necessary except the truck bed holes



Requires no welding, bed flange trimming or bed removal



No lowering of exhaust or spare tire on #60702 and #60633

Product Details

- Center locator eliminates the need to measure where the ball hole should be
- Easy, one-person installation
- Quickly bolts on underneath the truck bed in 45 minutes or less (#60614, #60626)
- Places ball in front of rear axle for proper distribution of weight and handling (#60702, #60642)
- U-edging provided for a clean finish on the hole cut for the ball (#60702, #60642)
- Included patented 2-5/16" ball operates with a simple, quarter-turn latch-locking system to eliminate the need for an under-bed side handle
- Heavy-duty 5/8" spring-loaded safety chain loops for a reliable connection
- Tested for safety in accordance with SAE J2638
- Not compatible with X5 adapters or #60654 RockerBall
- Highly durable, rust-resistant, liquid A-coat finish
- **Not compatible with 5th wheel prep packages**



OEM-STYLE GOOSENECK HITCHES



60626 Ram



60614 Ram



60702 Ford



60633 Ram

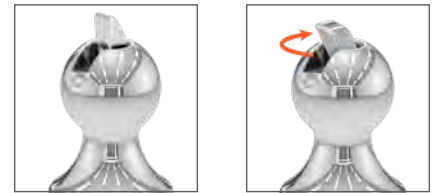


60642 Chevrolet / GMC

Make / Model	Style	Years	Part #	GTW / Vertical Load
Chevrolet				
Silverado 2500 HD	--	20 - 25	60642	38,000 / 9,500 lbs.
Silverado 3500 HD	Excluding Cab & Chassis	20 - 25	60642	38,000 / 9,500 lbs.
Ford				
F-250 Super Duty	--	17 - 25	60702	38,000 / 9,500 lbs.
F-350 Super Duty	Excluding Cab & Chassis	17 - 25	60702	38,000 / 9,500 lbs.
F-450 Super Duty	Excluding Cab & Chassis	17 - 22	60702	38,000 / 9,500 lbs.
GMC				
Sierra 2500 HD	--	20 - 25	60642	38,000 / 9,500 lbs.
Sierra 3500 HD	Excluding Cab & Chassis	20 - 25	60642	38,000 / 9,500 lbs.
Ram				
2500	Excluding Cab & Chassis	19 - 25	60633	35,000 / 8,750 lbs.
		14 - 18	60614	30,000 / 7,500 lbs.
3500	Excluding Cab & Chassis	19 - 25	60633	35,000 / 8,750 lbs.
		13 - 18	60626	30,000 / 7,500 lbs.

Not compatible with 5th wheel prep packages

Quarter-turn gooseneck ball



Factory-style gooseneck ball operates with a simple, 1/4-turn latch-locking system



Patented Center Locator eliminates measuring where the ball hole should be. Simply drill up from under the truck bed

30k
GTW

DOUBLE LOCK EZR™ GOOSENECK HITCH SYSTEM

Product Details & Operation

- Center tested up to 30,000 lbs. GTW and 7,500 lbs. vertical load
- Weight ratings are limited to vehicle manufacturer's stated capacities
- Includes 2-5/16" chrome-plated ball, 5/8" spring-loaded, zinc-plated safety chain loops and grade-8 hardware
- Protected by a durable A-coat finish with carbide black powder coat
- Tested for safety in accordance with SAE J2638



Engage the double locking pins for superior pin strength



Retract the sturdy 3/8" handle and drop the ball into the hole



After towing, flip the ball over to eliminate obstructions



Install the hole cover to protect the ball from the elements

What Makes the EZr™ Different?

One-person installation



Easy-to-install clips eliminate the need for a second person to hold up the center section while installing the brackets

- Uses carriage bolts when possible for one-wrench tightening
- No need to lower exhaust on Chevrolet, Ford, GMC and most Dodge / Ram models
- No need to relocate cable hanger and ground wire on Dodge / Ram models

No measuring required



Patented Center Locator eliminates the need to measure where the ball hole should be. Simply drill up from under the truck bed

- Safety chain loop holes are drilled from the underside of the truck bed
- No welding or truck bed removal required
- Center Locator covered by patent #D685,299 S

How is the EZr™ Installed Without Measuring?



Step 1 - Place Center Locator in the gooseneck hitch ball hole



Step 2 - Fully install brackets and hitch to the vehicle frame



Step 3 - Use Center Locator to drill pilot hole to drill pilot hole up from under bed



Step 4 - Use pilot hole to drill down, no measuring required

DOUBLE LOCK EZR™ GOOSENECK HITCH SYSTEM

If a particular application is not listed below,
see page 259 for OEM-style hitches or page 264 for original Double Lock™ hitches

Make / Model	Style	Years	Capacity	EZr Kit #	Footnotes	Hitch #	Bracket #
Chevrolet / GMC							
Silverado 2500	Excl Cab & Chassis	01 - 04	30,000 lbs.	60681	●	60619	60648
Silverado 2500 HD	--	20 - 25	25,000 lbs	60690	●	60611	60701
		11 - 19	30,000 lbs.	60680	●,1	60611	60624
		01 - 10	30,000 lbs.	60681	●	60619	60648
Silverado 2500 HD Classic	Excl Cab & Chassis	07 - 07	30,000 lbs.	60681	●	60619	60648
Silverado 3500	Excl Cab & Chassis	01 - 06	30,000 lbs.	60681	●	60619	60648
Silverado 3500 Classic	Excl Cab & Chassis	07 - 07	30,000 lbs.	60681	●	60619	60648
Silverado 3500 HD	Excl Cab & Chassis	20 - 25	25,000 lbs	60690	●	60611	60701
		11 - 19	30,000 lbs.	60680	●,1	60611	60624
		08 - 10	30,000 lbs.	60681	●	60619	60648
Dodge							
Ram 2500 / 3500	Excl Cab & Chassis	03 - 10	30,000 lbs.	60682	●, 1, 2, 3	60619	60660
Ford							
F-250	--	99 - 99	30,000 lbs.	60685	●	60619	60647
F-250 Super Duty	--	11 - 16	30,000 lbs.	60683	●	60619	60645
		99 - 10	30,000 lbs.	60685	●	60619	60647
F-350 Super Duty	Excl Cab & Chassis	11 - 16	30,000 lbs.	60683	●	60619	60645
		99 - 10	30,000 lbs.	60685	●	60619	60647
GMC							
Sierra 2500	Excl Cab & Chassis	01 - 04	30,000 lbs.	60681	●	60619	60648
Sierra 2500 HD	--	20 - 25	25,000 lbs	60690	●	60611	60701
		11 - 19	30,000 lbs.	60680	●,1	60611	60624
		01 - 10	30,000 lbs.	60681	●	60619	60648
Sierra 2500 HD Classic	Excl Cab & Chassis	07 - 07	30,000 lbs.	60681	●	60619	60648
Sierra 3500	Excl Cab & Chassis	01 - 06	30,000 lbs.	60681	●	60619	60648
Sierra 3500 Classic	Excl Cab & Chassis	07 - 07	30,000 lbs.	60681	●	60619	60648
Sierra 3500 HD	Excl Cab & Chassis	20 - 25	25,000 lbs	60690	●	60611	60701
		11 - 19	30,000 lbs.	60680	●,1	60611	60624
		07 - 10	30,000 lbs.	60681	●	60619	60648
Ram							
2500	--	11 - 13	30,000 lbs.	60682	●, 1, 2, 3	60619	60660
3500	Excl Cab & Chassis	11 - 12	30,000 lbs.	60682	●, 1, 2, 3	60619	60660

1. Passenger-side wheel well flange must be bent for frame rail access
 2. Check inverted ball clearance with heavy loads on two-wheel drive

3. Exhaust may have to be permanently lowered on power wagon and Mega cab applications
 ● =No frame drilling required

30k
GTW

ORIGINAL DOUBLE LOCK™ GOOSENECK HITCHES

See page 264 for original
Double Lock application guide

- Flip-and-store ball keeps truck bed free of obstructions
- Installation requires no welding or truck bed removal
- Heavy-duty handle can be positioned on either side of the vehicle
- Rubber hole cover helps prevent corrosion in trailer ball hole
- Includes spring-loaded safety chain loops and grade-8 hardware
- Highly durable carbide black powder coat finish
- Branded, retail-friendly brown box (#60607)



Engage the double locking pins for superior pin strength



Retract the sturdy 3/8" handle and drop the ball into the hole



Chrome trim ring for a clean, professional finish

Part #	Make / Model	Years	Ball Size	Finish	GTW / Vertical Load
60607	Multiple applications for Chevrolet, Ford, GMC, Nissan, Ram See page 264 for full application listing	--	2-5/16"	Carbide black	30,000 / 7,500 lbs.
60615	Chevrolet Silverado 1500 & GMC Sierra 1500	07 - 18	2-5/16"	Carbide black	30,000 / 7,500 lbs.
	Chevrolet Silverado 1500 LD & GMC Sierra 1500 Limited	19 - 19			

ORIGINAL DOUBLE LOCK™ GOOSENECK BALLS

- 2-5/16" gooseneck balls rated up to 30,000 lbs. GTW and 7,500 lbs. vertical load



60602



60603

Part #	Description	For Use With
60602	2-5/16" offset ball moves pivot point 4" rearward for added cab clearance	Original Double Lock goosenecks only
60603	2-5/16" riser ball adds 1" clearance for trucks with plastic or rubber bed liners	Original Double Lock goosenecks only



30K
GTW

ROCKERBALL™ CUSHION HITCH GOOSENECK BALL

Product Details

- ShockDrop™ technology reduces jerking and jarring and promotes a smooth tow
- Virtually maintenance-free with no airbag or bearings to service
- Forged steel construction for dependable towing strength
- Durable carbide black powder coat finish on base and chrome plating on ball
- Heavy-duty plastic storage case keeps components on-hand whenever needed
- Tested for safety to meet SAE J2638 specifications
- Grease zerk fitting provides easy lubrication
- **Not compatible with OEM-style goosenecks**
- Patent pending

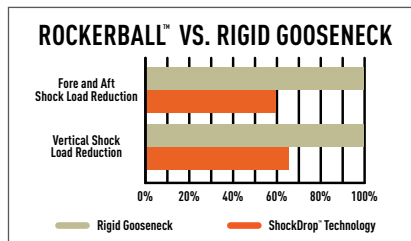


ShockDrop™ technology



The cushioned isolator improves ride comfort for animals and passengers

Advanced engineering



Offset pin dampens vertical chucking and fore-aft motion during starts and stops

Simple installation



Simple, drop-in installation easily replaces traditional gooseneck balls

Part #	Gooseneck Hitch Compatibility	GTW / Vertical Load	Ball Size	Rise
60654	CURT Double Lock Original, CURT EZr and most B&W gooseneck hitches*	30,000 / 7,500 lbs.	2-5/16"	6-1/2"

* For B&W models, hitch must accept gooseneck ball with 2" from the bottom of the shank to center of locking pin hole



30K
GTW

ORIGINAL DOUBLE LOCK™ GOOSENECK HITCHES

Make / Model	Style	Years	Footnotes	Kit # (Hitch and Brackets)	Hitch #	Bracket #
Chevrolet						
C/K 1500	--	88 - 99	●	60713	60607	60631
C/K 2500 / C3500	Excluding Cab & Chassis	88 - 00	●	60713	60607	60631
Silverado 1500	--	07 - 18	●	60711	60615	60632
		99 - 06	●	60712	60607	60652
Silverado 1500 Classic	--	07 - 07	●	60712	60607	60652
Silverado 1500 HD	--	01 - 06	●	60712	60607	60652
Silverado 1500 HD Classic	--	07 - 07	●	60712	60607	60652
Silverado 1500 LD	--	19 - 19	●	60711	60615	60632
Silverado 2500	Excluding Cab & Chassis	99 - 04	●	60712	60607	60652
Silverado 2500 HD	Excluding Cab & Chassis	11 - 19	●	60710	60607	60604
		01 - 10	●	60712	60607	60652
Silverado 2500 HD Classic	Excluding Cab & Chassis	07 - 07	●	60712	60607	60652
Silverado 3500	Excluding Cab & Chassis	01 - 06	●	60712	60607	60652
Silverado 3500 Classic	Excluding Cab & Chassis	07 - 07	●	60712	60607	60652
Silverado 3500 HD	Excluding Cab & Chassis	11 - 19	●	60710	60607	60604
		08 - 10	●	60712	60607	60652

All models: Brake, fuel and electrical lines may need to be loosened or repositioned. Heat shield requires modification or removal.

1. Passenger-side wheel well must be notched for frame rail access
2. Parking brake cable bracket may require relocation
3. Exhaust may have to be permanently lowered on 2005 and newer models
4. Ball cannot be turned over. Brake lines must be cable-tied (ties included)
5. Do not invert ball with heavy loads on two-wheel-drive models
6. ● = No frame drilling required



On two-wheel-drive trucks, a clearance check must be performed when truck is loaded and unloaded to verify the inverted ball will not interfere with the top of the differential. See footnote 6.

Make / Model	Style	Years	Footnotes	Kit # (Hitch and Brackets)	Hitch #	Bracket #
Dodge						
Ram 1500	--	09 - 10	●	60730	60607	60657
		02 - 08	●, 1, 2, 6	60733	60607	60659
		94 - 01	●	60734	60607	60635
Ram 2500 / 3500	Excluding Cab & Chassis	03 - 10	●, 1, 2, 6	60732	60607	60661
		94 - 02	●	60734	60607	60635
Ford						
F-150	Excl. Police Responder, Raptor, Lightning, or dual exhaust	22 - 23	●	60724	60607	60649
	Excl. Police Responder or Raptor	15 - 21	●	60724	60607	60649
	--	04 - 14	●	60721	60607	60641
		97 - 03	●	60722	60607	60637
		80 - 96	1	60723	60607	60636
F-150 Heritage	--	04 - 04	●	60722	60607	60637
F-250	Light Duty	97 - 99	●	60722	60607	60637
	Excluding Cab & Chassis	80 - 98	1	60723	60607	60636
F-250 Super Duty	--	99 - 16	●, 3	60720	60607	60644
F-350	Excluding Cab & Chassis	80 - 98	1	60723	60607	60636
F-350 Super Duty	Excluding Cab & Chassis	99 - 16	●, 3	60720	60607	60644
F-450 Super Duty	Excluding Cab & Chassis	08 - 12	●, 3	60720	60607	60644
GMC						
C/K 1500	--	88 - 99	●	60713	60607	60631
C/K 2500 / C3500	Excluding Cab & Chassis	88 - 00	●	60713	60607	60631
Sierra 1500	--	07 - 18	●	60711	60615	60632
		99 - 06	●	60712	60607	60652
Sierra 1500 Classic	--	07 - 07	●	60712	60607	60652
Sierra 1500 HD	--	01 - 06	●	60712	60607	60652
Sierra 1500 HD Classic	--	07 - 07	●	60712	60607	60652
Sierra 1500 Limited	--	19 - 19	●	60711	60615	60632
Sierra 2500	Excluding Cab & Chassis	99 - 04	●	60712	60607	60652
Sierra 2500 HD	Excluding Cab & Chassis	11 - 19	●	60710	60607	60604
		01 - 10	●	60712	60607	60652
Sierra 2500 HD Classic	Excluding Cab & Chassis	07 - 07	●	60712	60607	60652
Sierra 3500	Excluding Cab & Chassis	01 - 06	●	60712	60607	60652
Sierra 3500 Classic	Excluding Cab & Chassis	07 - 07	●	60712	60607	60652
Sierra 3500 HD	Excluding Cab & Chassis	11 - 19	●	60710	60607	60604
		07 - 10	●	60712	60607	60652
Ram						
1500	Coil springs, excluding Limited	11 - 18	●	60730	60607	60657
1500 Classic	Coil springs	19 - 24	●	60730	60607	60657
2500	--	11 - 13	●, 1, 2, 6	60732	60607	60661
3500	Excluding Cab & Chassis	11 - 12	●, 1, 2, 6	60732	60607	60661
Toyota						
Tundra	6.5' bed	07 - 21	●, 5	60751	60607	60667

All models: Brake, fuel and electrical lines may need to be loosened or repositioned. Heat shield requires modification or removal.

1. Passenger-side wheel well must be notched for frame rail access
 2. Parking brake cable bracket may require relocation
 3. Exhaust may have to be permanently lowered on 2005 and newer models
 4. Do not invert ball with heavy loads on two-wheel-drive models
 5. Ball cannot be turned over. Brake lines must be cable-tied (ties included)
 6. Do not invert ball with heavy loads on two-wheel-drive models
- = No frame drilling required

30k
GTW

OVER-BED FOLDING BALL GOOSENECK HITCH

See adjacent page for folding ball application guide

- Folding ball design keeps truck bed free of obstructions
- Stainless steel safety pin and pivot spring prevent binding
- Permanently attached gooseneck ball
- Includes safety chain loops and grade-8 hardware
- Patents: #5,571,270; #5,755,452; #5,435,585



61052

How Folding Ball Works

Open storage cover



Lift T-handle and drop ball



Close cover to store ball



Part #	Description	Plate Size	Ball Size	Finish	GTW / Vertical Load
61052	Folding ball gooseneck hitch	12" x 14"	2-5/16"	Carbide black	30,000 / 7,500 lbs.

30k
GTW

OVER-BED FIXED BALL GOOSENECK HITCHES

See adjacent page for fixed ball application guide

- Reinforcement required to reach max gross trailer weight rating



65500



61100

Part #	Description	Plate Size	Ball Size	Finish	GTW / Vertical Load
65500	Flat plate with fixed trailer ball and two 1/2" forged D-rings	13" x 48"	2-5/16"	Carbide black	30,000 / 7,500 lbs.
61100	Flat plate with fixed trailer ball (safety chain hook-ups sold separately)	12" x 12"	2-5/16"	Carbide black	30,000 / 7,500 lbs.



30K OVER-BED GOOSENECK APPLICATION GUIDE

GTW

- Up to 30,000 lbs. GTW (limited to vehicle capacities)
- Vehicle-specific design optimizes strength and installation time
- Constructed from high-strength, laser-cut steel for a precise fit
- Protected by a rust-resistant liquid A-coat
- Includes grade-8 mounting hardware



61301

Make / Model	Style	Years	Foot Notes	Folding Ball Hitch #	Fixed Ball Hitch #	Flat Plate Hitch #	Bracket #
Chevrolet / GMC							
Silverado / Sierra 1500	--	99 - 06	●	61052	61100	65500	61341
Silverado / Sierra 1500 Classic	--	07 - 07	●	61052	61100	65500	61341
Silverado / Sierra 2500	Excluding Cab & Chassis	99 - 04	●	61052	61100	65500	61341
Silverado / Sierra 2500 HD	--	11 - 19	●	61052	61100	65500	61301
		01 - 10	●	61052	61100	65500	61341
Silverado / Sierra 2500 HD Classic	--	07 - 07	●	61052	61100	65500	61341
Silverado / Sierra 3500	Excluding Cab & Chassis	01 - 06	●	61052	61100	65500	61341
Silverado / Sierra 3500 Classic	Excluding Cab & Chassis	07 - 07	●	61052	61100	65500	61341
Silverado / Sierra 3500 HD	Excluding Cab & Chassis	11 - 19	●	61052	61100	65500	61301
		07 - 10	●	61052	61100	65500	61341
Dodge							
Ram 1500	--	94 - 01	--	61052	61100	65500	61509
Ram 2500 / 3500	Excluding Cab & Chassis	94 - 02	--	61052	61100	65500	61509
Ford							
F-250 Super Duty	--	99 - 15	●	61052	61100	65500	61332
F-350 Super Duty	Excluding Cab & Chassis	99 - 15	●	61052	61100	65500	61332
F-450 Super Duty	Excluding Cab & Chassis	08 - 11	●	61052	61100	65500	61332

● = No frame drilling required

WELD-ON GOOSENECK BALL

- Constructed from high-strength, ready-to-weld SAE 51340 steel
- Heat-treated for optimum durability
- Tested to U.S. VESC V-5 specifications



Part #	GTW	Ball Size	Finish
40094	30,000 lbs	2-5/16"	Raw

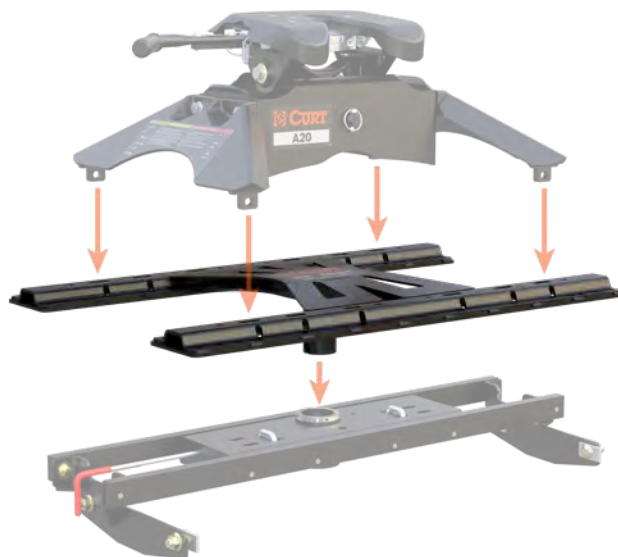
20k GTW X5™ GOOSENECK TO 5TH WHEEL ADAPTER PLATES

The X5 adapter plate allows a gooseneck hitch to become a mounting platform for a 5th wheel hitch. The X5 shank simply drops into the gooseneck ball hole and instantly provides a set of industry-standard 5th wheel base rails. See the table below for gooseneck hitch compatibility.

For more information about mounting a 5th wheel hitch, see page 204.

Product Details

- Converts a gooseneck hitch into a set of standard 5th wheel base rails
- No assembly or tools required – just drop it in, lock it and go
- For use with CURT and competitor 5th wheels up to 20,000 lbs.
- Capacity limited to lowest-rated towing component
- Accepts any standard CURT 5th wheel legs or roller (excludes OEM puck system)
- Durable carbide black powder coat finish
- Co-cured in a rust-resistant liquid A-coat
- **Not compatible with OEM-style gooseneck hitches or turret-style pin boxes, such as Sidewinder™ or Turning Point™**
(Trademark of First Brands Group™)



16210 - Fits CURT original Double Lock



16220 - Fits CURT Double Lock EZr



16310 - Fits B&W Turnoverball

Part #	Fits	Capacity	Shank Style
16210	CURT Double Lock 60607 and 60615	20,000 lbs.	Round shank
16220	CURT Double Lock EZr 60611 and 60619	20,000 lbs.	Round shank
16310	B&W Turnoverball® (excl. shallow models; shank hole is 2-1/4" from plate surface)	20,000 lbs.	Square shank

ADJUSTABLE GOOSENECK COUPLER

NEW

- Self-centering locking plate for easier hookup
- Adjustable length with 8" of adjustment (29-1/3" retracted height)
- Easy-access lock handle for secure connection
- Compatible with most round-tube trailer tongues
- Added material around pin holes to prevent hole elongation and reduce wear
- Quality steel construction for dependable towing strength
- Tested for safety to meet SAE J2638 specifications



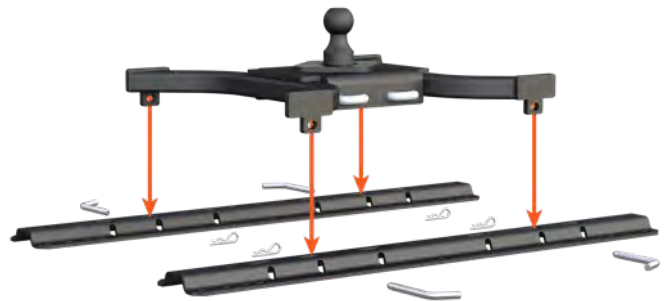
Part #	GTW / TW	Ball Diameter	Inside Diameter	Outside Diameter	Finish
25030 N	30,000 lbs. / 9,000 lbs.	2-5/16"	4"	4-1/2"	Raw

5TH WHEEL RAIL OPTIONS

5TH WHEEL RAIL GOOSENECK HITCHES

See page 221 to select custom 5th wheel brackets

- Allows pickup trucks equipped with 5th wheel rails to tow gooseneck trailers
- Mounts to all industry-standard 5th wheel rails
- Four-pin installation and removal for easy truck bed access
- #16055 can be positioned over the axle or rotated to provide a 3" rearward offset
- Includes safety chain hookups, pins & clips
- Highly durable carbide black or teridium grey powder coat finish
- Tested for safety in accordance with SAE J2638
- Branded, retail-friendly brown box



16090



16085



16055

Part #	Description	GTW	Ball Size	Finish
16090*	Spyder™ gooseneck hitch	30,000 lbs.	2-5/16"	Dark grey teridium
16085	Spyder™ gooseneck hitch	25,000 lbs.	2-5/16"	Carbide black
16055	Bent plate gooseneck hitch with 3" offset	25,000 lbs.	2-5/16"	Carbide black
23256	Base rail lock	--	--	Black powder-coated aluminum



23256

* Requires base rail #16205 to reach 30K capacity, see page 221 for custom 5th wheel brackets and ratings

GOOSENECK ELECTRICAL

CUSTOM WIRING EXTENSION HARNESSSES

- Routes a 7-way RV blade socket into truck bed while retaining use of rear socket
- Simple plug-and-play design eliminates the need for cutting or splicing
- Allows for easy connection of gooseneck wiring
- Requires 2-1/8" hole saw for installation
- Neoprene well nuts isolate steel bolts from aluminum surfaces (select models)
- See page 162 for more information



Right-angle plug for easy installation



7' routes socket into rear of the truck bed



10' routes socket closer to truck cab

7-WAY RV BLADE EXTENSION HARNESS

- Routes existing 7-way RV blade socket into full-size pickup truck bed (7' length)
- Universal size fits any 7-way RV blade socket
- Allows for easy connection of gooseneck wiring
- See page 164 for more information



REPLACEMENT 7-WAY RV BLADE HARNESSSES

- Replaces the trailer-end plug of any 7-way harness
- Wires protected by heavy-duty, weather-resistant cable
- Cold-weather harnesses feature soft thermoplastic elastomer casing to remain flexible in cold temperatures (temperature rating from -40°F up to 221°F)
- See page 165 for more information



BRAKE CONTROLLERS

For a full list of benefits see pages 144 - 147

- Easily calibrated for all towing needs
- Proportional and time-delay units available



51200

Echo® in-line
Hidden under vehicle
Bluetooth-enabled
Smartphone-ready



51190

Echo® under-dash
Hidden under dash
Bluetooth-enabled
Smartphone-ready



51180

Echo® mobile
Portable design
Bluetooth-enabled
Smartphone-ready



51170

Spectrum™
Integrated OE look
Hidden main body
Tri-color LED display



51146

TriFlex™ NEXT
Tri-axis sensitivity
Auto adjustment
Digital display



51126

Discovery™ NEXT
Time-delay
Adjustable output
Digital display



51116

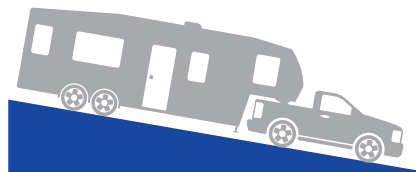
Venturer™ NEXT
Time-delay
Adjustable output
Ramp-up LED display

Dynamic power adjustment

Applies to Echo, Spectrum, Assure and TriFlex



4.0 ▶ **3.2** Automatic power reduction for incline



4.0 ▶ **5.3** Automatic power increase for decline



Tri-axis circuit detects inertia on three planes for greater sensitivity over dual-axis models

Note: Values represented are for illustration only. The actual preset and adaptive values may differ from those shown here.

Name	Pkg #	6-Pack #	Axles	Brakes	Activation Method	Display	Mount Angle	Sleep Mode	Electric Over Hydraulic	Warranty
Echo in-line	51200	--	1 - 4	2 - 8	Proportional	Phone app	Any	Yes	No	Ltd lifetime
Echo under-dash	51190	--	1 - 4	2 - 8	Proportional	Phone app	Any	Yes	No	Ltd lifetime
Echo mobile	51180	--	1 - 2	2 - 4	Proportional	Phone app	Any	N/A	No	Ltd lifetime
Spectrum	51170	--	1 - 4	2 - 8	Proportional	Tri-color LED	Any	N/A	No	Ltd lifetime
TriFlex NEXT	51146	511466 N	1 - 4	2 - 8	Proportional	LED digital	Any	Yes	No	Ltd lifetime
Discovery NEXT	51126	511266 N	1 - 4	2 - 8	Time-delay	LED digital	Any	Yes	Yes	Ltd lifetime
Venturer NEXT	51116	511166 N	1 - 3	2 - 6	Time-delay	LED digital	Any	Yes	Yes	Ltd lifetime

REPLACEMENT PARTS

OEM PUCK SYSTEM KIT REPLACEMENT PARTS



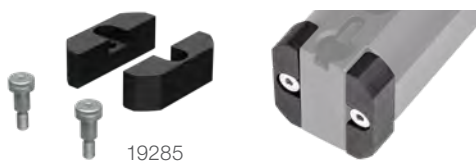
Part #	Description	Fits
66155	Rubber puck hole cover	All puck system center holes
19250	Anchor pin & lynch pin, qty 1 (Fits Ram)	60617, 60618, 60638, 60698
19251	Anchor pin & lynch pin, qty 1 (Fits Chevrolet, Ford, GMC, Nissan)	60691, 60692, 60639, 60691

OEM-STYLE HITCH REPLACEMENT PARTS



Part #	Description	GTW / Vertical Load	Ball Size	Rise	Fits
66155	Rubber puck hole cover	--	--	--	All
60601	OEM-style ball	30,000 / 7,500 lbs.	2-5/16"	1/2"	All
60629	OEM-style ball	30,000 / 7,500 lbs.	2-5/16"	1-5/8"	All
60628	OEM-style ball	30,000 / 7,500 lbs.	3"	1-5/8"	All
60627	OEM-style ball	38,000 / 9,500 lbs.	2-5/16"	1-5/8"	All
60634	OEM-style ball	38,000 / 9,500 lbs.	3"	1-5/8"	All

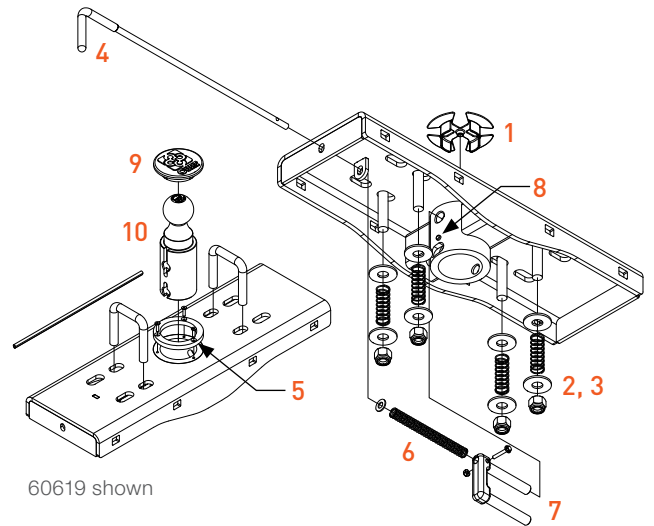
ROCKERBALL™ GOOSENECK BALL REPLACEMENT PART



Part #	Description	Fits
19285	Adapter kit for B&W hitches	60654

EZR™ & ORIGINAL DOUBLE LOCK REPLACEMENT PARTS

Fig #	Part #	Description	Fits
1	19253	Center locator	EZr
2	19254	Safety chain U-bolt spring kit - 5/8" U-bolts, qty 2 - U-bolt spring, qty 4 - 5/8" flat washers, qty 8 - 5/8" nylock nuts, qty 4	EZr
3	19260	Safety chain U-bolt spring kit - 1/2" U-bolts, qty 2 - U-bolt spring, qty 4 - 1/2" flat washers, qty 8 - 1/2" nylock nuts, qty 4	Original
4	19255	Handle assembly - #10 hex flange screw, qty 1 - #10 nylock nut, qty 1 - Handle rod, qty 1 - Handle grip, qty 1	EZr & original
5	19256	Chrome trim ring with hardware	EZr & original
6	19257	Handle spring with two washers	EZr & original
7	19258	Locking pin with hardware	EZr & original
8	19259	5/16" cylinder guide pin	EZr & original
9	66165	Rubber hole cover	EZr & original
10	60616	Gooseneck ball, 2-5/16"	EZr & original



OVER-BED HITCH REPLACEMENT PARTS

Part #	Description	Fits
66123	T-handle	61052
19260	Safety chain U-bolt spring kit - 1/2" U-bolts, qty 2 - U-bolt spring, qty 4 - 1/2" flat washers, qty 8 - 1/2" nylock nuts, qty 4	61052
66113	Safety chain U-bolt spring kit - 5/8" U-bolts, qty 2 - U-bolt spring, qty 4 - M16 flat washers, qty 4 - 5/8" nylock nuts, qty 4	61100



5TH WHEEL RAIL HITCH REPLACEMENT PARTS

Part #	Description	Fits
16902	Pin & clip, qty 4	16090, 16085, 16055

