



TRUCK PLOW PRODUCT GUIDE: 2025-26
BEST SERVED COLD



SNOWPLOWS

HARDWORKING PLOWS FOR HARDWORKING PEOPLE.

IS YOUR FLEET STORM READY?



V-PLOWS

Push, stack, or windrow snow with the same truck and plow.



WING PLOWS

Wing operation lets the operator increase efficiency with every push.



STRAIGHT BLADE PLOWS

Simple operation for windrowing snow.

REASONS TO BELIEVE

We're known around the globe for tough products made by tough Mainers. Consider these features standard, no matter what's on the front of your truck.

(A) Chain Lift Design

The FISHER® chain-lift setup stacks higher, scrapes cleaner, and recovers easier than direct-lift designs. When reliability matters most, count on the chain.

(B) Minute Mount® 2 Plow Attachment

A rugged mechanical hookup built for harsh winters. No sensitive electronics—just smart design that guides your plow and meets safety standards.

(C) SECURITY GUARD™ Anti-Theft System

Lock your plow electronically when detached. Only your control or backup code can unlock it—protection that's smart, simple, and secure.

(D) STORM GUARD™ Powder Coat*

A finish built for years of hard winters. Epoxy-primed and powder-coated—this is the best protection against rust and wear in the industry.

Pre-Punched Blades

Accessory-ready blades come pre-punched, saving install time and protecting your finish. Just bolt on and go—no drilling required.

FLEET FLEX Electrical System

One wiring system for all modern FISHER plows. Simplifies installs, minimizes vehicle disruption, and keeps operations nimble—any plow, any truck, any time. Dependable and fleet-friendly.

Reliable Hydraulics

Fast, smooth, and protected from the elements. Fisher Engineering builds its own hydraulics for total confidence when the storm hits.

Isolation Module

Plug-and-play electrical system that shifts your lights to the plow automatically. Keeps vehicle systems safe and installs clean with sealed OEM-grade connectors.

Universal Control Options

Choose between a hand-held or dash-mounted control—both intuitive, backlit, and built to handle long hours and tough jobs. Features include soft-stop, float mode, and anti-theft lock.



(A)



(B)



(C)



(D)

STRAIGHT BLADE PLOWS





STRAIGHT BLADE PLOWS

STRAIGHT TO THE JOB. STRAIGHT TO THE POINT.

BEST SUITED FOR:

Operators who prefer simplicity and reliability. Straight blades are well-suited for smaller lots, driveways, and general-purpose plowing where straightforward performance and ease of use are key.

VEHICLE COMPATIBILITY:

Varies across models, ranging from class 2-7 trucks.

WHAT THIS MEANS FOR YOU:

Push straight through the biggest, boldest tasks with the legacy lineup of FISHER® straight blades. Designed for reliability and ease of use, these plows feature simple hydraulics that let you lift, lower, and angle the blade no matter where the job takes you.

SIGNATURE FEATURES



▣ **HYDRAULIC BLADE POSITIONING**

Effortlessly control lift, drop, and angle with in-cab controls.



▣ **ATTACHMENT SYSTEMS**

Quick on/off mounting keeps your truck ready when you need it and clear when you don't.



▣ **TRIP-EDGE DESIGN**

Independent trip-edges on the moldboard protect your equipment and keep snow moving forward—no springs to adjust or replace.



▣ **TRADITIONAL STRUCTURE**

Built to work through every job with less moving parts and more focus on pure power—an ongoing ode to where FISHER began in 1948.



HC

A high-capacity straight blade engineered for deep snow and long pushes in large commercial applications. Built with a tall moldboard and strong ribs for maximum durability.

BLADE SIZES:	9' (2.74 m), 10' (3.05 m)
BLADE CONSTRUCTION:	11-ga powder-coated steel
STRUCTURAL REINFORCEMENT:	Eight (8) Heavy-duty vertical ribs, gussets, and pins
LIFT & ANGLE RAM DIAMETER:	1.75" 2" (4.45 cm x 5.08 cm)
VEHICLE COMPATIBILITY:	Classes 4-7 (under 26,000 GVWR)



SD SERIES

A straight blade tailored for lighter-duty trucks and residential use, combining rugged steel design with a compact footprint. Great for first-time contractors or home-based snow removal.

BLADE SIZES:	6'9" (2.06 m), 7'6" (2.29 m)
BLADE CONSTRUCTION:	14-ga powder-coated steel
STRUCTURAL REINFORCEMENT:	Eight (8) vertical ribs and a torsion tube
LIFT & ANGLE RAM DIAMETER:	1.5" 1.5" (3.81 cm 3.81 cm)
VEHICLE COMPATIBILITY:	Classes 2 & 3



HDX™

A stainless steel straight blade with a flexible attack angle, designed to conform to uneven terrain and reduce wear. Perfect for municipal and commercial jobs needing versatility and power.

BLADE SIZES:	8' (2.44 m), 9' (2.74 m)
BLADE CONSTRUCTION:	14-ga stainless steel
STRUCTURAL REINFORCEMENT:	Eight (8) vertical ribs
LIFT & ANGLE RAM DIAMETER:	1.5" 1.5" (3.81 cm 3.81 cm)
VEHICLE COMPATIBILITY:	8' - Classes 2 & 3 9' - Classes 2-5



HT SERIES

A straight blade made for half-ton trucks, offering a lightweight, easy-to-handle option without compromising strength. Ideal for homeowners and light commercial users seeking reliable performance.

BLADE SIZES:	7'6" (2.29 m)
BLADE CONSTRUCTION:	14-ga powder-coated steel
STRUCTURAL REINFORCEMENT:	Six (6) vertical ribs and a full-length horizontal tube
LIFT & ANGLE RAM DIAMETER:	2" 1.5" (5.08 cm 3.81 cm)
VEHICLE COMPATIBILITY:	Half-Ton, Class 1



HD2™

A heavy-duty straight blade with steel construction and reinforced ribs, made for serious plowing on tough surfaces. Best for professionals working in commercial lots and high-snow regions.

BLADE SIZES:	7'6" (2.29 m), 8' (2.44 m), 8'6" (2.59 m), 9' (2.74 m)
BLADE CONSTRUCTION:	12-ga powder-coated steel
STRUCTURAL REINFORCEMENT:	Ten (10) vertical ribs
LIFT & ANGLE RAM DIAMETER:	1.5" 1.5" (3.81 cm 3.81 cm)
VEHICLE COMPATIBILITY:	Classes 2 & 3



HS

A compact, lightweight straight blade made for smaller trucks and SUVs, ideal for residential and tight-space plowing. Offers durable performance with minimal vehicle strain.

BLADE SIZES:	6'8" (2.03 m), 7'2" (2.18 m)
BLADE CONSTRUCTION:	16-ga powder-coated steel
STRUCTURAL REINFORCEMENT:	Six (6) vertical ribs and a full-length horizontal tube
LIFT & ANGLE RAM DIAMETER:	1.5" 1" (3.81 cm 2.54 cm)
VEHICLE COMPATIBILITY:	Mid-Size Pickups, Jeeps

FROM DUSK TO DAWN,

INTENSIFIRE™ LED HEADLIGHTS

Designed for superior visibility, offering long-lasting performance (~50,000 hours) and energy efficiency. Ideal for those who prioritize high performance, these LEDs are built to handle tough conditions and maximize safety during night plowing.

EdgeView™ TECHNOLOGY

Provides a wide, 180-degree bright beam for superior visibility in low-light conditions.

ENERGY EFFICIENT

Energy-efficient and long-lasting, reducing the need for frequent replacements.

DURABLY DEPENDABLE

Flat, ultra-white beam reduces glare and lights up what's ahead with precision.

SMART HEATING

Built-in sensors activate heat only when needed to keep lenses clear in snow and ice.

INTENSIFIRE™ DUAL-HALOGEN HEADLIGHTS

Halogen headlamps are a cost-effective option that deliver reliable lighting (~1,500 hours) for everyday plowing needs. This is the standard, trusted lighting kit that's shown the way for endless operators over the years.

PRICED RIGHT

Lower initial cost, for those not ready to go all-in on LEDs.

RELIABLE IN COLD

Trusted for years by FISHER Nation, providing warm light in cold temperatures.

REPLACEABLE ANYTIME

Despite not lasting as long as LEDs, halogen bulbs are easy to replace whenever needed.

LET THE LIGHTS BURN BRIGHT.



STAY IN CONTROL.



NO MATTER THE JOB.

FISHER controls are built to keep you focused, efficient, and in command—no matter what plow you're running. With a consistent control layout across

most models, there's no learning curve when your fleet or workload expands. That means less downtime and more confidence on the job.



PLOW ACCESSORIES

Let the details do the heavy lifting.

Back Drag Edges

Made from ¼" abrasion-resistant steel and custom fit to your blade, back drag edges improve plowing results, providing a clean scrape while back dragging.

Commercial Blade Guide Kits

Commercial blade guides are highly visible fluorescent orange, enhanced with reflective tape, featuring the FISHER® logo, and available in 24" or 36" lengths.

(A) Steel Deflector

Extend the height of your blade and help keep snow off the windshield without affecting your ability to stack snow.

(B) FISHER Factory Original Paint

Genuine Factory-Tough paint in black, silver, and FISHER yellow provides durable coverage and is mixed to match your original equipment. Available in spray cans, quarts or gallons.

(C) Plow Parka

Heavy-duty, FISHER branded, nylon cover protects electrical and hydraulic systems from sun fade, oxidation and corrosion.

EZ Flow Hydraulic Fluid

FISHER EZ Flow high-performance hydraulic fluid is specifically formulated to provide better viscosity at temperatures for optimal performance in severe conditions. Available in 1-quart, 1-gallon, and 55-gallon sizes.

(D) Wing Extensions

Expand the carrying capacity of your XtremeV™ HD2™, HDX™ blades.

Blade Angle Stop

Designed to transfer extreme impacts throughout the blade's structure and reduce stress on the hydraulic rams.

Curb Guards

Constructed of abrasion-resistant material and designed to fit tight to the blade, our curb guards allow you to plow along curbs without damaging your blade. Kits vary by plow model.

Emergency Parts Kit – Minute Mount® 2

Be prepared! This emergency parts kit is designed specifically for the NEW FLEET FLEX system snowplows. All kits contain high-volume FISHER Genuine Factory-Tough service parts needed for most emergency repairs.

FREEZE GUARD™ Grease

Available in 14 oz, 7 lb, 120 lb, and 400 lb sizes, FISHER FREEZE GUARD Grease defends and protects plow and spreader bearings, pivot points and moving components from wear and corrosion, even in extreme cold.

Heavy-Duty Lift Ram

Improve your blade's lifting force with this larger-diameter ram.

Cutting Edges

Increase wear resistance and restore your worn base angle to the proper geometry. Steel, rubber, poly, and carbide options available depending on plow model.

SnoFoil® Steel and Poly Deflectors

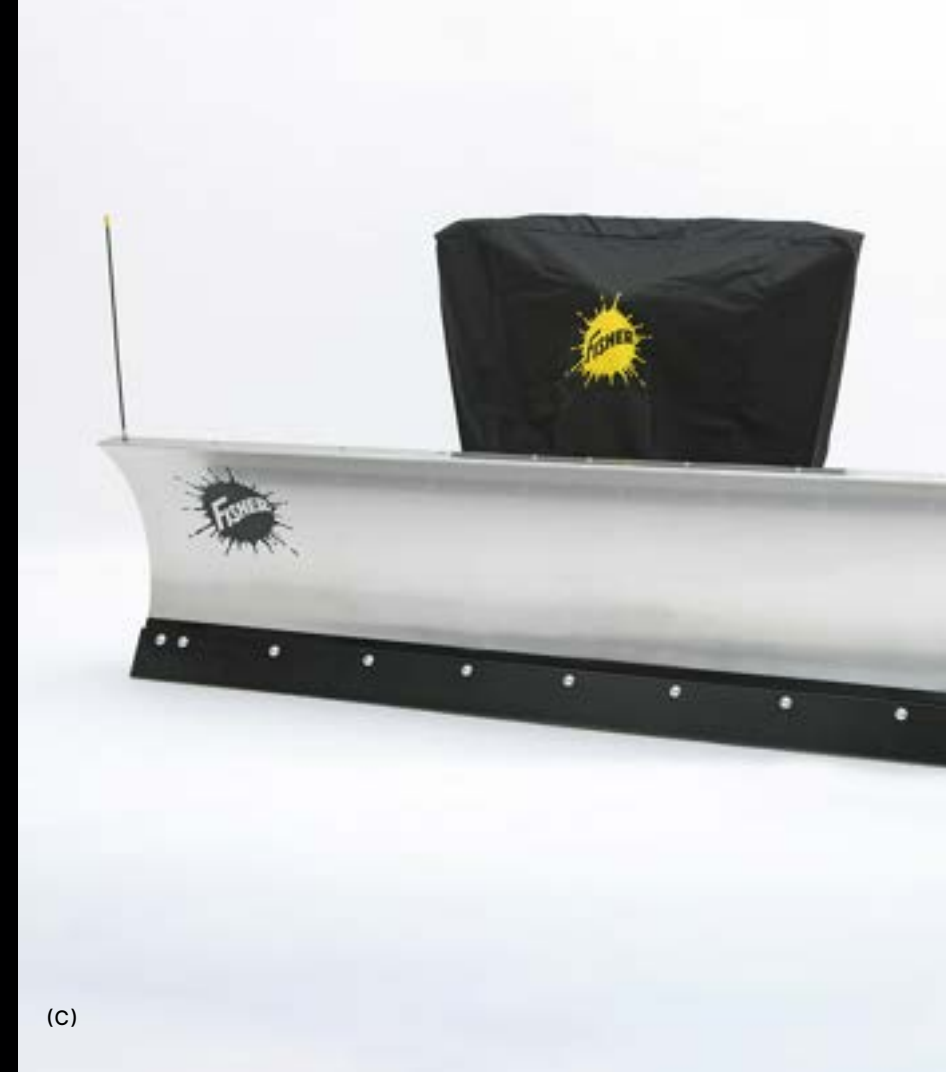
The curved, rigid design of the SnoFoil deflector provides excellent snow-rolling performance, ensuring you have visibility while plowing and reduces snow accumulation on the windshield.

Shoe Kits

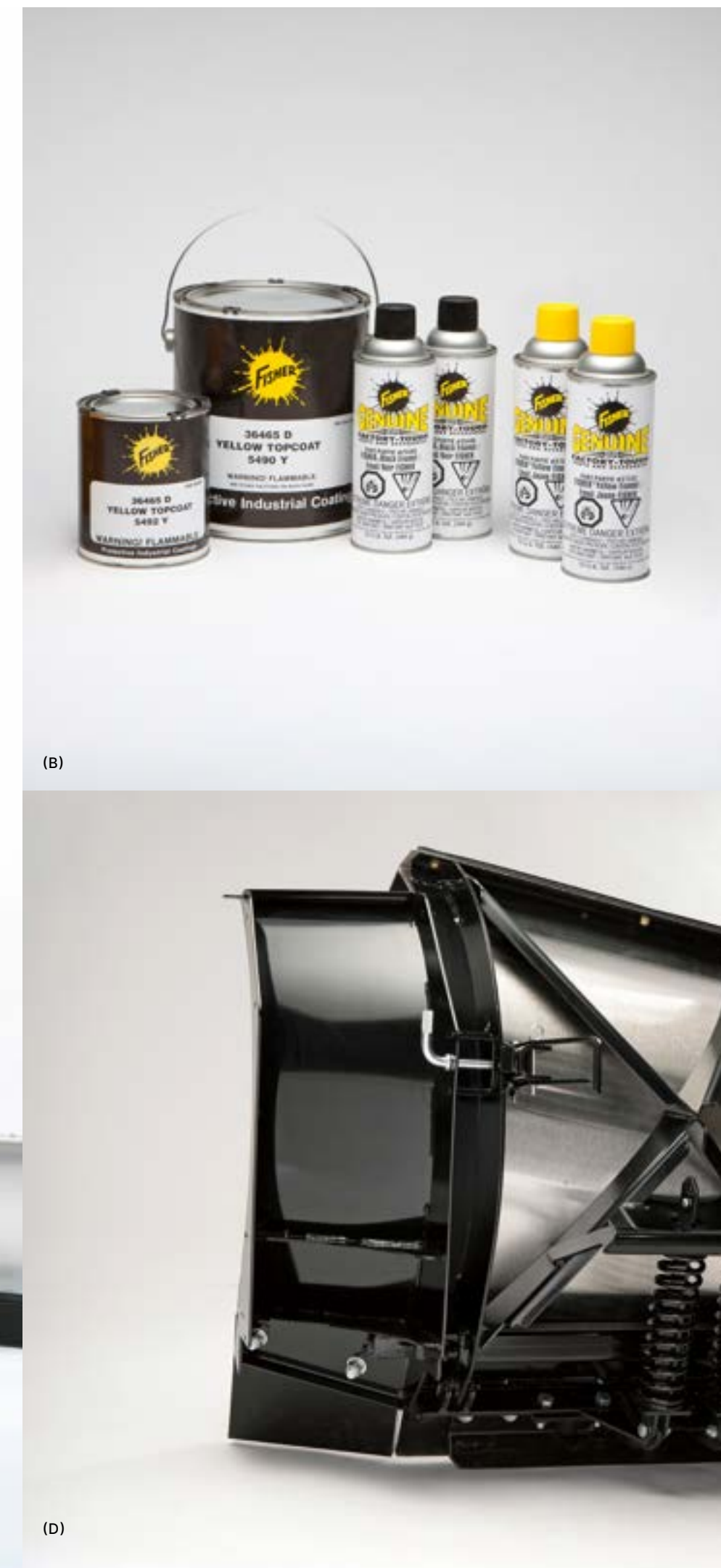
Designed to increase the durability and life span of cutting edges and base angles by raising the blade for use on gravel and uneven surfaces. Extreme heavy-duty shoe kits available for specific models.



(A)



(C)



(B)

(D)

COMPREHENSIVE STRAIGHT BLADE PLOW SPECS

Applies to HC and HDX:

*Plus vehicle mount: approx. 184 lb (83.46 kg) on HC model; 60 lb (27.22 kg) on HDX model

Applies to HDX:

†HDX blade height shown is for the 55° attack angle. The 65° attack-angle blade height is 28.5" and the 75° attack-angle blade height is 27".

Applies to HD2:

**Plus vehicle mount: approx. 60 lb (27.22 kg)

HC	9' (2.74 m)	10' (3.05 m)	HD2™	7'6" (2.29 m)	8' (2.44 m)
MOLDBOARD OPTIONS:	Steel	Steel	MOLDBOARD OPTIONS:	Steel	Steel
BLADE WIDTH:	9' (2.74 m)	10' (3.05 m)	BLADE WIDTH:	7'6" (2.29 m)	8' (2.44 m)
BLADE HEIGHT:	34" (86.36 cm)	34" (86.36 cm)	BLADE HEIGHT:	29" (73.66 cm)	29" (73.66 cm)
BLADE THICKNESS:	11 ga	11 ga	BLADE THICKNESS:	12 ga	12 ga
TRIP SPRINGS:	6	6	TRIP SPRINGS:	3	4
RIBS:	8	8	RIBS:	10	10
LIFT CYLINDER:	1.75" x 10" (4.45 cm x 25.40 cm)	1.75" x 10" (4.45 cm x 25.40 cm)	LIFT CYLINDER:	1.5" x 10" (3.81 cm x 25.40 cm)	1.5" x 10" (3.81 cm x 25.40 cm)
ANGLING RAMS:	2" x 12.5" (5.08 cm x 31.75 cm)	2" x 12.5" (5.08 cm x 31.75 cm)	ANGLING RAMS:	1.5" x 12" (3.81 cm x 30.48 cm)	1.5" x 12" (3.81 cm x 30.48 cm)
PLOWING WIDTH (FULL ANGLE):	7'11" (2.41 m)	8'10" (2.67 m)	PLOWING WIDTH (FULL ANGLE):	6'9" (2.05 m)	7'2" (2.19 m)
APPROXIMATE WEIGHT:*	1,178 lb (534 kg)	1,312 lb (594 kg)	APPROXIMATE WEIGHT:**	709 lb (321 kg)	752 lb (341 kg)
CUTTING EDGE:	0.5" x 6" (1.27 cm x 15.24 cm)	0.5" x 6" (1.27 cm x 15.24 cm)	CUTTING EDGE:	0.375" x 6" (0.95 cm x 15.24 cm)	0.5" x 6" (1.27 cm x 15.24 cm)
MOUNT TYPE:	Minute Mount® 2	Minute Mount 2	MOUNT TYPE:	Minute Mount® 2	Minute Mount 2
HDX™	8' (2.44 m)	9' (2.74 m)	HD2™	8'6" (2.59 m)	9' (2.74 m)
MOLDBOARD OPTIONS:	Stainless	Stainless	MOLDBOARD OPTIONS:	Steel	Steel
BLADE WIDTH:	8' (2.44 m)	9' (2.74 m)	BLADE WIDTH:	8'6" (2.59 m)	9' (2.74 m)
BLADE HEIGHT:	29" (73.66 cm) †	29" (73.66 cm) †	BLADE HEIGHT:	29" (73.66 cm)	29" (73.66 cm)
BLADE THICKNESS:	14 ga	14 ga	BLADE THICKNESS:	12 ga	12 ga
TRIP SPRINGS:	4	4	TRIP SPRINGS:	4	4
RIBS:	8	8	RIBS:	10	10
LIFT CYLINDER:	1.5" x 10" (3.81 cm x 25.40 cm)	1.5" x 10" (3.81 cm x 25.40 cm)	LIFT CYLINDER:	1.5" x 10" (3.81 cm x 25.40 cm)	1.5" x 10" (3.81 cm x 25.40 cm)
ANGLING RAMS:	1.5" x 12" (3.81 cm x 30.48 cm)	1.5" x 12" (3.81 cm x 30.48 cm)	ANGLING RAMS:	1.5" x 12" (3.81 cm x 30.48 cm)	1.5" x 12" (3.81 cm x 30.48 cm)
PLOWING WIDTH (FULL ANGLE):	7'2" (2.19 m)	8'1" (2.46 m)	PLOWING WIDTH (FULL ANGLE):	7'7" (2.32 m)	8'1" (2.46 m)
APPROXIMATE WEIGHT:*	861 lb (390 kg)	902 lb (409 kg)	APPROXIMATE WEIGHT:**	769 lb (348 kg)	789 lb (357 kg)
CUTTING EDGE:	0.5" x 6" Steel (1.27 cm x 15.24 cm)	0.5" x 6" Steel (1.27 cm x 15.24 cm)	CUTTING EDGE:	0.5" x 6" (1.27 cm x 15.24 cm)	0.5" x 6" (1.27 cm x 15.24 cm)
MOUNT TYPE:	Minute Mount 2	Minute Mount 2	MOUNT TYPE:	Minute Mount 2	Minute Mount 2

COMPREHENSIVE STRAIGHT BLADE PLOW SPECS

Applies to SD Series and HT Series
 *Plus vehicle mount: approx. 60 lb (27.22 kg)
 Applies to HS
 **Not including vehicle mount

SD SERIES	6'9" (2.06 m)	7'6" (2.29 m)	HS	6'8" (2.03 m)	7'2" (2.18 m)
MOLDBOARD OPTIONS:	Steel	Steel	MOLDBOARD OPTIONS:	Steel	Steel
BLADE WIDTH:	6'9" (2.06 m)	7'6" (2.29 m)	BLADE WIDTH:	6'8" (2.03 m)	7'2" (2.18 m)
BLADE HEIGHT:	26" (66.04 cm)	26" (66.04 cm)	BLADE HEIGHT:	23.5" (59.69 cm)	23.5" (59.69 cm)
BLADE THICKNESS:	14 ga	14 ga	BLADE THICKNESS:	16 ga	16 ga
TRIP SPRINGS:	2	2	TRIP SPRINGS:	2	2
RIBS:	8	8	RIBS:	6	6
LIFT CYLINDER:	1.5" x 6" (3.81 cm x 15.24 cm)	1.5" x 6" (3.81 cm x 15.24 cm)	LIFT CYLINDER:	1.5" x 6" (3.81 cm x 15.24 cm)	1.5" x 6" (3.81 cm x 15.24 cm)
ANGLING RAMS:	1.5" x 10" (3.81 cm x 25.40 cm)	1.5" x 10" (3.81 cm x 25.40 cm)	ANGLING RAMS:	1" x 7" (2.54 cm x 17.78 cm)	1" x 7" (2.54 cm x 17.78 cm)
PLOWING WIDTH (FULL ANGLE):	6'1" (1.85 m)	6'9" (2.06 m)	PLOWING WIDTH (FULL ANGLE):	5'11" (1.80 m)	6'4" (1.90 m)
APPROXIMATE WEIGHT:*	501 lb (227 kg)	517 lb (234 kg)	APPROXIMATE WEIGHT:**	260 lb (118 kg)	267 lb (121 kg)
CUTTING EDGE:	1" x 6" Poly (2.54 cm x 15.24 cm)	1" x 6" Poly (2.54 cm x 15.24 cm)	CUTTING EDGE:	0.25" x 5" (0.64 cm x 12.70 cm)	0.25" x 5" (0.64 cm x 12.70 cm)
MOUNT TYPE:	Minute Mount® 2	Minute Mount 2	MOUNT TYPE:	Minute Mount® 2	Minute Mount 2

HT Series™	7'6" (2.29 m)
MOLDBOARD OPTIONS:	Steel
BLADE WIDTH:	7'6" (2.29 m)
BLADE HEIGHT:	27" (68.58 cm)
BLADE THICKNESS:	14 ga
TRIP SPRINGS:	2
RIBS:	6 + Tube
LIFT CYLINDER:	2" x 6.75" (5.08 cm x 17.14 cm)
ANGLING RAMS:	1.5" x 8" (3.81 cm x 20.32 cm)
PLOWING WIDTH (FULL ANGLE):	6'7" (2.01 m)
APPROXIMATE WEIGHT:*	417 lb (189 kg)
CUTTING EDGE:	Full Length Base Angle included with Blade
MOUNT TYPE:	Minute Mount 2



FISHER STORIES:

THE MAN BEHIND THE MOUNTS.

For the past 30 years, Andre LeBlond has grown the FISHER® legacy through his masterful engineering work—with a focus on our trusted mount systems. His name sits on the US Patent of the Minute Mount® 2. His team is responsible for every mount across FISHER Nation. And his story is endlessly inspiring.

Scan to watch





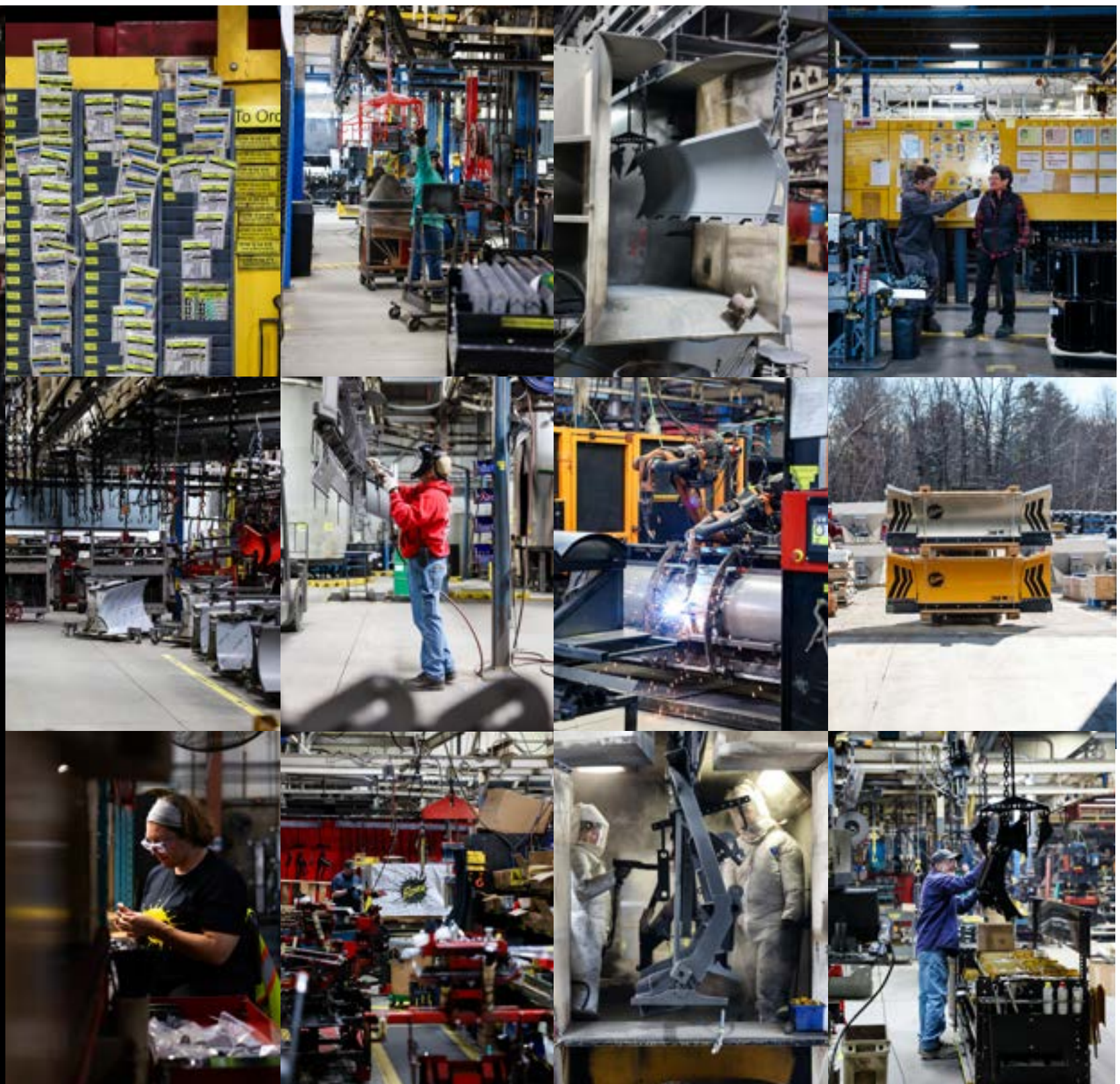
BORN IN THE USA.

SNOW + ICE IN OUR DNA

In 1948, a man named Dean Fisher started a snowplow company. The name was simple: His. And the destination was busy: Boston. So after a trip to see the in-laws in Maine, the plan changed.

Fisher chose a small coastal town called Rockland. In his words: "What better place to build snowplows than in snow country?" He began in a small garage by the water, and designed over 50 snowplows that first winter. Parts were chained to the pier—testing corrosion in the cold, salty ocean. That set the relentless bar for every winter to come. Over 75 years later, snowplows from Fisher Engineering are

frozen into culture as the leader of snow and ice removal. Our success grew us out of the garage, but we've always kept that day-one spirit. Still building, testing, and proving right here in Rockland.



"THE BEST PRODUCT WE KNOW HOW TO MAKE. THE BEST SERVICE WE KNOW HOW TO GIVE."

-Dean Fisher

FISHER ENGINEERING | 50 Gordon Drive | Rockland, Maine 04841

Fisher Engineering reserves the right under its product improvement policy to change construction or design details and furnish equipment when so altered without reference to illustrations or specifications used. Fisher Engineering or the vehicle manufacturer may require or recommend optional equipment for snow removal. Do not exceed vehicle ratings with a snowplow. This product is manufactured under the following US patents 7,681,334; 7,797,859; 9,200,418; 9,296,571; 9,822,563; 10,793,056; 11,680,379; 12,188,190; CAN patent 2,843,990; 2,900,491; and other patents pending. Fisher Engineering offers a limited warranty for all equipment and accessories. See separately printed page for this important information. The following are registered (®) or unregistered (™) trademarks of Douglas Dynamics, LLC: EdgeView™, EZ-V®, FISHER®, FREEZE GUARD™, HD2™, HDX™, HT Series™, INTENSIFIRE, Minute Mount® 2, SECURITY GUARD™, SnoFoil®, STORM GUARD™, TEMPEST™, XLS™, XRS™, XtremeV™.



FISHERPLOWS.COM

© 2025 Douglas Dynamics, LLC
All rights reserved.



SEE YOU IN THE STORM