

HARTFORD TRUCK EQUIPMENT



WE'VE GOT THE BODY FOR YOU

(860) 290-9516 • HartfordTruck.com



Success. Execution. Excellence.

Welcome to **Hartford Truck Equipment (HTE)**. We're a second-generation, family-owned business, serving New England and beyond with top-tier commercial truck equipment since 1994. Over the years, our commitment to excellence in sales, service, parts, and support has built a strong reputation you can rely on.

Our leadership in the industry ensures that we deliver exceptional reliability and sustainability tailored to meet the specific needs of your operation—whether large or small. We're dedicated to supporting the work truck community with a wide array of trusted equipment and solutions.

With an extensive inventory from the most reputable manufacturers, **HTE** has everything you need to keep your trucks running efficiently, from equipment and parts to installment and service.



Impressive Inventory!

**Lift Gates
Accessories
Dump Bodies**

**Platform Bodies
Landscape Bodies
Dry Freight Bodies**

**Snow Plows
Van Interiors
Utility Bodies**

SERVICE, INSTALLATION & FABRICATION

Known for our certified and highly knowledgeable technicians, **HTE** installs high-quality products that boost your commercial vehicle's efficiency and performance on the job. Our foremen ensure your job is done right the first time with a quality check after each installation, providing precision and attention to detail, no matter the complexity.

Equipment or parts not exactly what you need? We offer expert fabrication services to deliver tailored solutions that meet your operational needs.

Beyond installation and fabrication, **HTE** also offers comprehensive service and support, including warranty work, general maintenance, and scheduled service. Our Service and Shop Team are here to keep you running smoothly and provide expert advice when you need it.

(860) 290-9516 • HartfordTruck.com



FLEET & MUNICIPAL SUPPORT

HTE is the one-stop destination for fleets and municipalities. Our team includes a dedicated sales representative specializing in multi-unit builds, so you can count on **HTE** to provide a seamless experience from bidding to completion. We work with

all major OEMs and highly trusted vendors to provide a custom build that seamlessly fits your on-the-job needs.



BAILMENT POOL

(860) 290-9516 • HartfordTruck.com

HTE is uniquely positioned as the sole bailment pool in Connecticut, establishing our value in the work truck market. After becoming a RAM bailment pool, we expanded to include Ford as well.

Working with HTE, you have access to our extensive inventory and more availability at a faster turnaround time, keeping your customers on the road.

Our position is never taken for granted as we continue to improve every aspect of our business. In turn with being a Ford bailment pool, we are also proud to be part of the Ford Pro Upfitter program. Reaching this status represents our commitment to excellence and ability to provide top-tier upfits to Ford commercial vehicles. As a Ford Pro Upfitter, you can trust we deliver solutions that meet the highest standards.



RAM



THE LEGACY ROLLS ON

AND YOU CAN FIND IT AT HARTFORD TRUCK

When the winds are howling and the snow is blowing, you're the only line of defense against harsh winter conditions. Check out the full line of snow and ice control equipment from Fisher Engineering. For over 75 years, FISHER® has built a proud legacy with truck plows, offering a diverse range of v-plows, straight blades, and wing plows to efficiently handle any application.

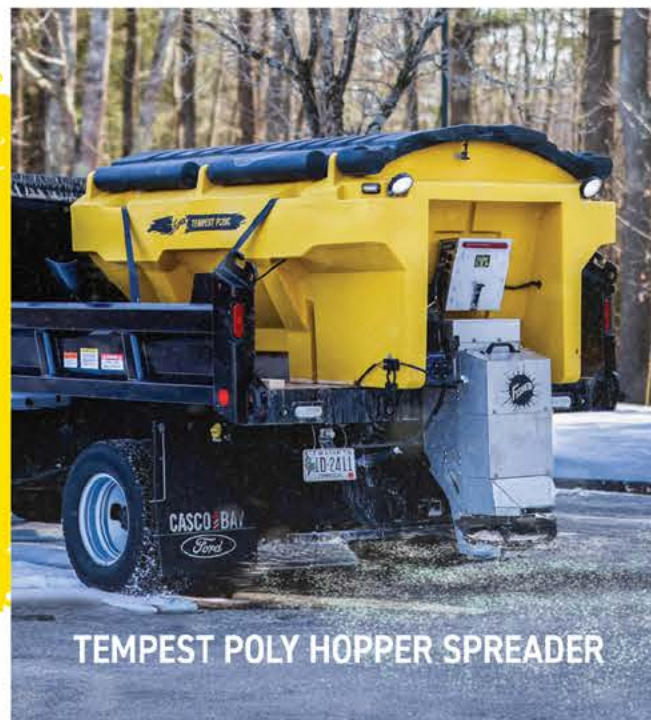
**FIND EVERYTHING YOU NEED AT HARTFORD TRUCK!
SALES, SERVICE, AND INSTALLATION IS A PHONE CALL AWAY.**



TRUCK PLOWS - V-PLOW, STRAIGHT BLADE, WING PLOW



**TEMPEST STAINLESS STEEL
HOPPER SPREADER**



TEMPEST POLY HOPPER SPREADER



**STORM BOXX HX HYDRAULIC WING
& STORM BOXX FIXED WING
PUSHER PLOWS**



UTV PLOWS & TAILGATE SPREADERS

HARTFORD TRUCK EQUIPMENT

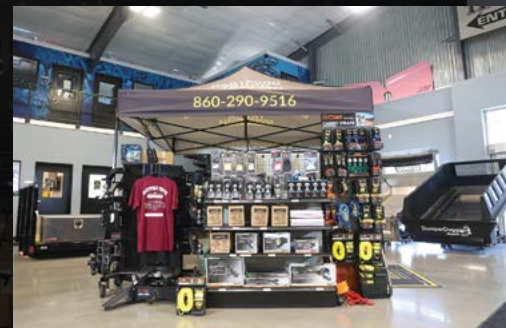
95 John Fitch Blvd
South Windsor, CT 06074
860-290-9516

The following are registered (®) or unregistered (™) trademarks of Douglas Dynamics, LLC:
FISHER®, STORM BOXX™, TEMPEST™, TRACE™, TRAILBLAZER™, QUICK-CASTER™, XV2™



LEARN MORE AT
FISHERPLOWS.COM

PARTS & SUPPLIES



If a work truck needs it, **HTE** has it. With thousands of different parts, we take pride in knowing we have the supplies needed to keep your truck on the road.

Stop by our showroom, and one of our Parts Sales Representatives will be ready to help. If you're looking for a hard-to-find item, let us know—we're pretty good at locating those parts or an equivalent replacement.

At the end of the day, **HTE** wants you back on the road doing what you do best. You can trust that Hartford Truck Equipment will find the right products at the best prices that best match your work truck needs.



DURAMAG

ALUMINUM SERVICE BODIES FOR ALL APPLICATIONS.

MAGNUM

HEADACHE RACKS & ACCESSORIES.

**GET IT DONE. DO IT RIGHT.
ENJOY THE RIDE.**

DuraMag truck bodies boast a real service tradition with real ambition on the job. They're built tough to get you to the site, to take care of business – whatever it takes. The all-aluminum bodies are lightweight, strong, contribute to better fuel economy and are corrosion resistant.

Magnum truck racks and accessories are ready to ride. Meticulously made in the Maine, the all-aluminum, welded construction with powder coated finish handles hard work, unpredictable weather – all while adding curb appeal for your truck.

To see our full lineup, visit: duramagbodies.com or magnumtruckracks.com

READING
TRUCK

**BUILT WITH AMERICAN
CRAFTSMANSHIP THAT'S
MADE TO LAST.**



825 E. Wyomissing Blvd., Reading, PA 19611 • www.readingtruck.com • MADE IN THE USA



Capacities from 800 to 10,000 lbs.



Hydraulic and 12V Electric Cranes
Moment Ratings - 4,500 to 72,000 ft.-lbs.
Quality Crane Manufacturer since 1961

Liftmoore, Inc. • 713-688-5533 • www.liftmoore.com



TRUCK BODIES
— EXPECT THE BEST —

RUGGED CONSTRUCTION



**SUPERIOR DESIGN IN
TRUCK BODY FABRICATION**



Honey Brook, PA • 610.273.0157 • www.shtruckbodies.com



Airflo®



Family Owned & Operated for more than 70 Years
The Leader in Manufacturing & Installing Quality Dump Bodies

9' & 11' Pro-Class Models



Stainless



Steel



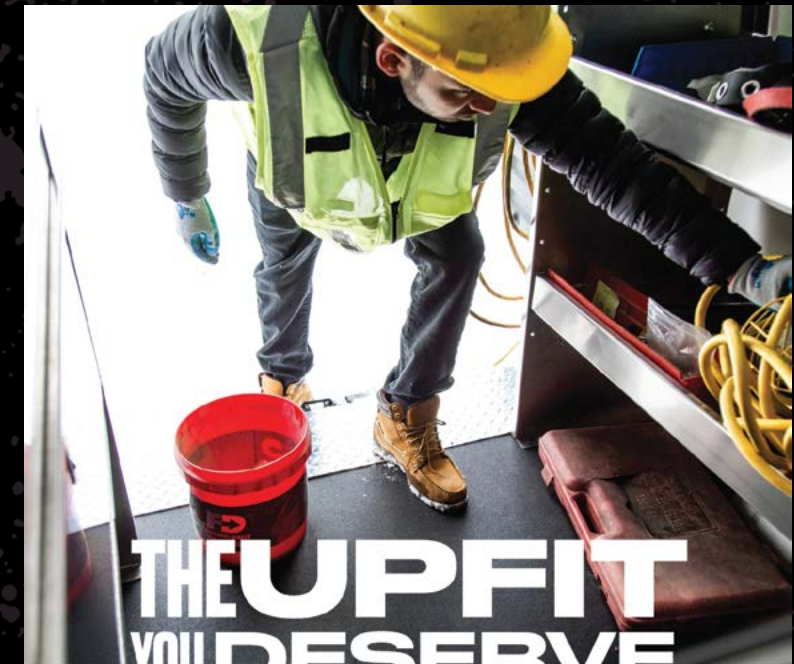
Aluminum (New)



10-11' AFT Hardox Bodies

AFT Models

Body	Sides	Floor	Tailgate
Standard	3/16" Hardox	3/16" Hardox	3/16" Hardox
Light Duty	5/32" Hardox	3/16" Hardox	3/16" Hardox
Heavy Duty	3/16" Hardox	1/4" Hardox	1/4" Hardox



THE UPFIT YOU DESERVE

DURABLE, TOUGH, LIGHTWEIGHT VAN FLOORS & LINERS

EVERYTHING WE DO AT LEGEND WORKS TO IMPROVE THE WELL-BEING OF DRIVERS, AND THEIR VANS.

#LegendsOfTheRoad



TRANSIT

DRY FREIGHT & REFRIGERATED

TRUCK BODIES

Transit Truck Bodies USA offers a multitude of innovative design features that improve durability, usability and appearance.

Featuring **corrosion-resistant materials**, **flexible design customization** and **rivet-free panels**, your next truck body is in a class of its own covered by the best warranty of the industry.



www.transit.ca

1-844-383-0104

THE FUTURE OF TRUCK BOXES IS HERE.



weather guard.

The new WEATHER GUARD® saddle & lo-side truck boxes provide unmatched protection plus built-in PowerSync™ freedom.



WHELEN®

MANUFACTURED IN AMERICA



FOR MORE INFO ON WHELEN CENCOM CORE® SYSTEMS SCAN THE QR CODE



www.whelen.com
@WhelenENG



SERVING NEW ENGLAND SINCE 1994



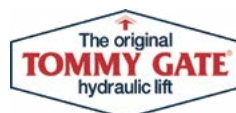
95 John Fitch Boulevard • South Windsor, CT 06074



(860) 290-9516 • HartfordTruck.com



©2024 District Publishing 586.884.2400 www.districtpublishing.com



WE'VE GOT THE BODY FOR YOU